




Dr. C. C. COMMONER

1950

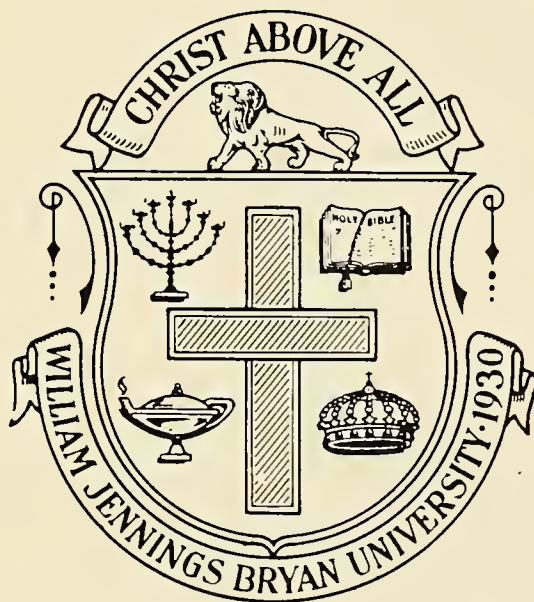


Digitized by the Internet Archive
in 2011 with funding from
LYRASIS Members and Sloan Foundation

<http://www.archive.org/details/commoner1950brya>



A yearly Event



The 1950

Commoner

PUBLISHED ANNUALLY BY THE JUNIOR CLASS OF
WILLIAM JENNINGS BRYAN UNIVERSITY
DAYTON, TENNESSEE

*D*edication

With respect, sincere devotion, and heart-felt love we dedicate the COMMONER OF 1950 to one who through her years at Bryan University has devoted her talents, her time, and her unselfish interests in serving the student—to our faithful Christian friend, Mrs. Earl Williamson.



***Mrs.
Earl
Williamson***

**Dr.
Judson
Rudd**



President

The past twenty years have been rich with experiences, many of them difficult, when we were sorely tried; but we remember them all as blessed opportunities to prove ourselves faithful. Maintaining a clear-cut testimony for Christ and the Bible, solving seemingly unsolvable problems, and handling serious difficulties related to the operation of a young educational institution have all served, not only to give us considerable material assets, but to give also an enviable reputation as a growing Christian college of the highest standards.

Matured, experienced, yet youthfully vigorous, Bryan University is prepared for more fruitful service to God and Country.

Judson Rudd



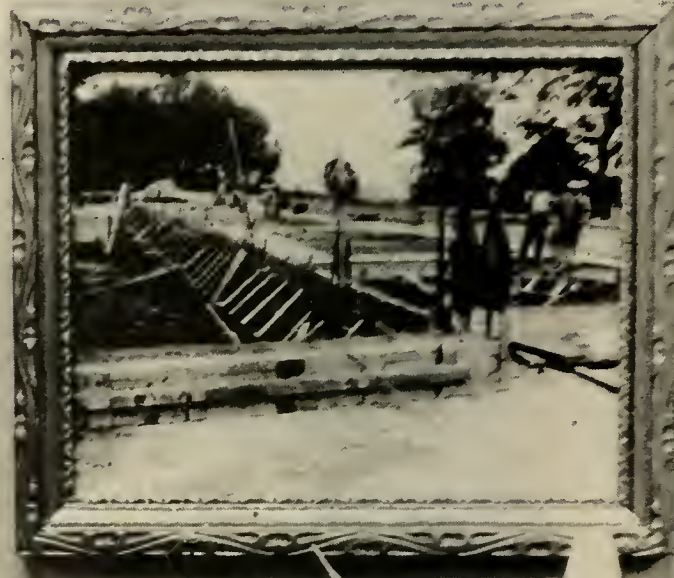


Through The

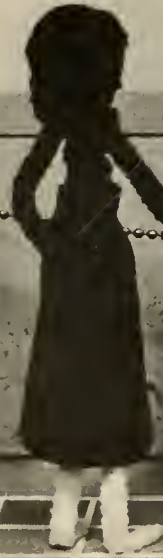
Through the years at Bryan—prosperous years and difficult years—there have been many evidences of God's guidance and blessing. Much progress has been made since that day when Bryan's first student body and faculty met in the old high school building in Dayton. In 1935 classes were begun on the hill and in 1938 amidst a time of general rejoicing the school moved to its new home on the Bryan Campus. Much



First Concrete Pouring
1927



Pouring Main Floor
1928



Years At Bryan

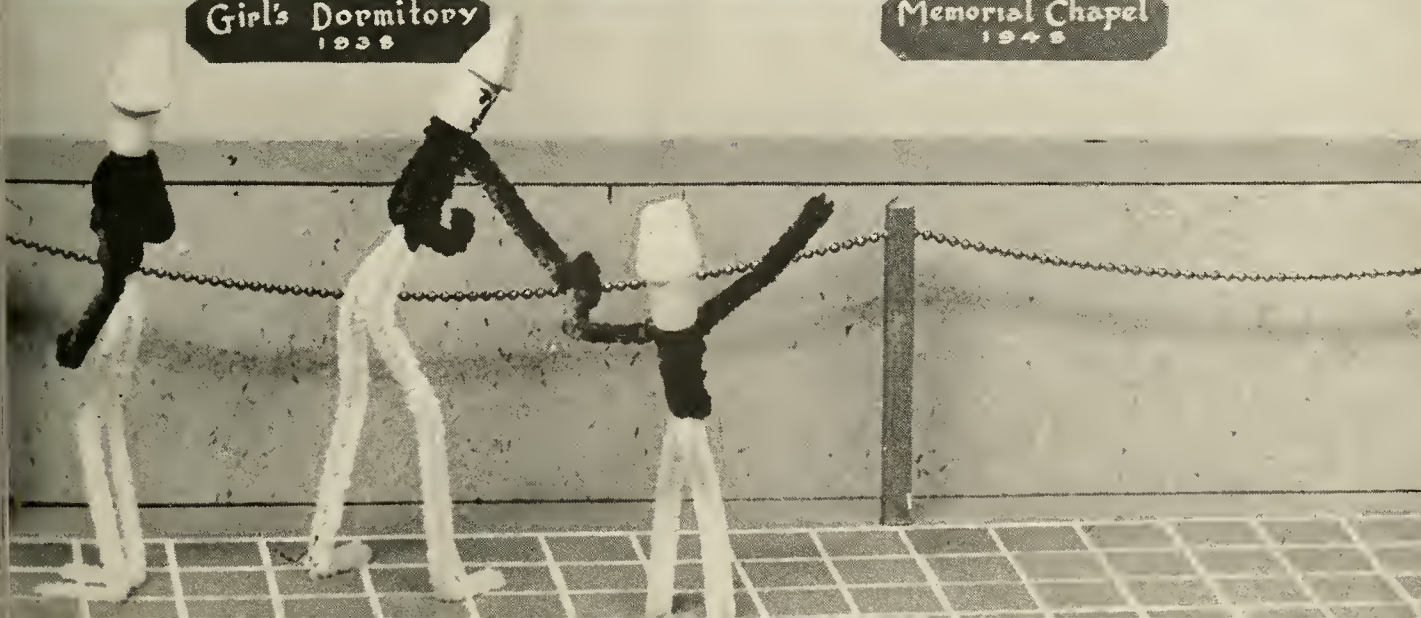
remained to be accomplished, but as the years went by, God proved Himself sufficient for every need. Dormitory space was provided for every student and work on the Administration Building continued for some time. Then in 1948, the Bryan University Memorial Chapel, another token of God's blessing, was completed.



Girls Dormitory
1938



Memorial Chapel
1948



and now 1950

"... He which hath begun a good work in you will perform it until the day of Jesus Christ." Because of our confidence in this promise of God, construction has been resumed on the Administration Building. Even this year of progress has not been without trials, but each time the needed sand, steel—and grace have come from our Heavenly Father. Those who are interested in Bryan have been greatly encouraged by the visible answer to prayer that can now be seen on Bryan Hill.



Building for Victory
II COR 2:14





Organizations



STUDENT COUNCIL

OFFICERS

LEONARD MEZNAR	President
WAYNE SNIDER	Vice-President
RUTH SUTTON	Secretary

The duties of the Student Council are to represent the student to the Administration and the Administration to the student. It is composed of two representatives from each class and two members chosen at large from the student body.





M. S. M.

ROY CLARK Chairman

The promotional activities of the students are directed by the MSM Committee, which is a subsidiary to the Student Council.



HAROLD GOEHRING Chairman
 MISS HALLOIN Faculty Advisor
 PROFESSOR GREEN Faculty Advisor

The duties of the Athletic Committee, under the Student Council, are to coordinate and direct the growing intramural athletic program of Bryan.



ATHLETIC COMMITTEE



C. S. A. COUNCIL

OFFICERS

ROBERT DAVIS	Chairman
REBECCA CRAIG	Secretary
PROFESSOR WILLIAMSON	Adviser

The C.S.A. Council with its subordinate committees directs the overall activity of the Christian Service Association.



FOREIGN MISSIONS FELLOWSHIP

OFFICERS

RICHARD TEVEBAUGH President
DALMAIN CONGDON Vice-President
JANICE GOEHRING Secretary
PROFESSOR HOYT Adviser

Those students who feel the call of foreign lands find in the F.M.F. fellowship, inspiration, and information concerning the fields of the world.





CHILD EVANGELISM

OFFICERS

RICHARD McINTOSH	President
ARDELLE COSTLEY	Vice-President
DELLA HUCK	Secretary
DEAN RADER	Sponsor

Through the Child Evangelism Fellowship many students have found a place of service in carrying the gospel to the children of the surrounding communities and into the public schools.



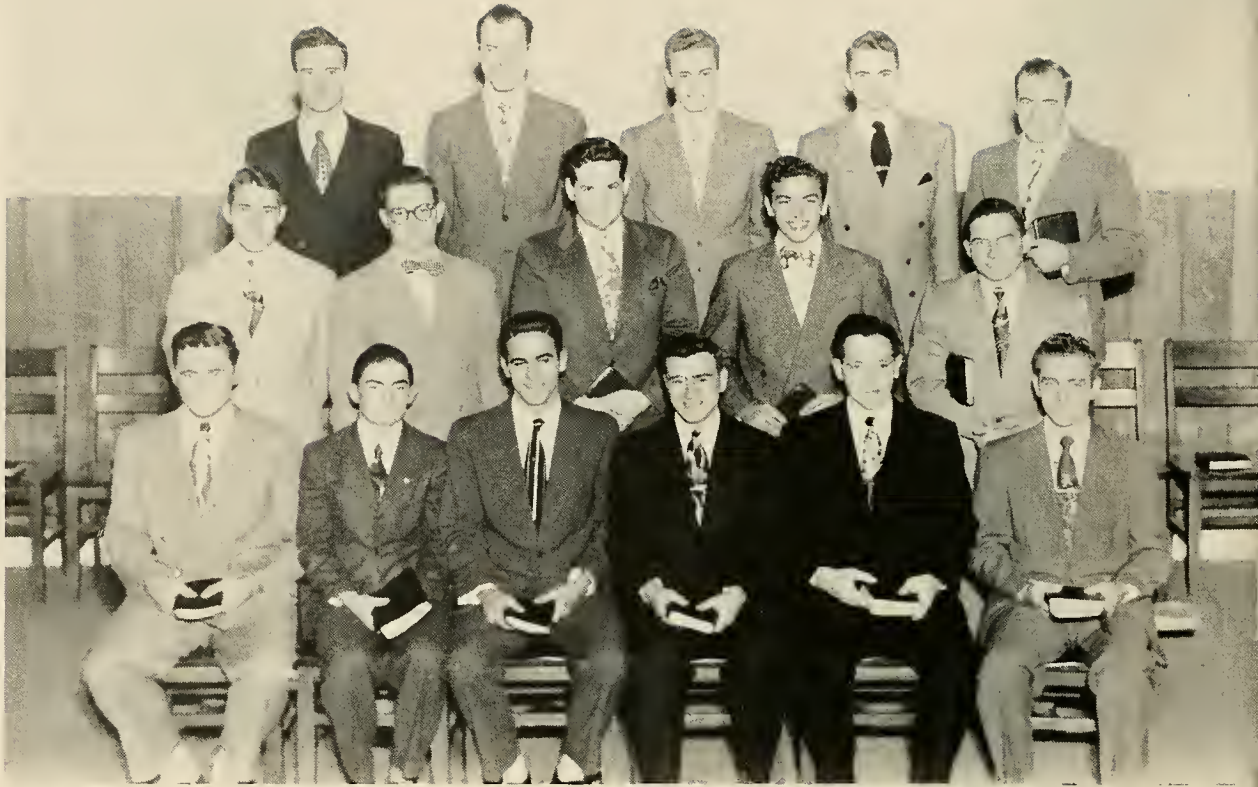
LAY AMBASSADORS

OFFICERS

WILLIAM ROLLER President
LAVANA FULLER Vice-President
LUCY WILLIAMS Secretary-Treasurer
MISS HALLOIN Sponsor

The Lay Ambassadors organization offers opportunities of fellowship for those who have not heard the definite call of the Lord to the mission field or the pastorate.





PASTORS' FELLOWSHIP

OFFICERS

EDWARD GREENWOOD	President
JOHN REED	Vice-President
KENNETH MOELLER	Secretary
PROFESSOR GREEN	Faculty Adviser



Planning for the ministry? This organization gives young men who feel called to full-time pastorates an opportunity to discuss the problems which they will meet in their future work.



GOSPEL SINGERS

ROY CLARK

ROBERT BRYANT

ROSS KING Accompanist

DEAN RYTHER Director

DEAN KOONTZ

CHARLES TABER



The testimony of Bryan University has been carried over thousands of miles as each summer the Gospel Singers bring their "Music with a Message".





BAND

MRS. HOWARD VOS Director



The Band has provided a means of participation for both townspeople and students. It has been a source of enjoyment to the community at football games as well as in special programs.



CHOIR

MRS. MARGARET Q. MCGOWAN Director

" . . . teaching and admonishing one another in psalms and hymns and spiritual songs, singing with grace in your hearts to the Lord." The choir has presented special programs throughout the year to the town of Dayton and the Bryan family.





FORENSIC UNION

OFFICERS

WAYNE PONTIOUS	President
ROY CLARK	Vice-President
RUTH SUTTON	Secretary
IAN HAY	Parliamentarian
FRANK BRILL	Sergeant-at-arms
DEAN RYTHOR	Faculty Adviser

Learning parliamentary procedure can be fun in Forensic Union! Debates, impromptu, extemporaneous speeches, musical numbers all give variety to Forensic programs.





SCIENCE CLUB

OFFICERS

LAMAR MODERT	President
ROY CLARK	Vice-President
WAYNE SNIDER	Secretary-Treasurer
PROFESSOR DIXON	Co-Sponsor
MISS HALLOIN	Co-Sponsor

The Science Club keeps its members posted on the intricacies of modern scientific developments through stimulating programs.

OFFICERS

RICHARD MAYCUMBER	President
JOHN RATHBUN	Vice-President
DOROTHY JONES	Secretary
KENNETH MOELLER	Treasurer
DEAN RYTHER	Sponsor

The members of the Camera Club learn and put into practice the rudiments of good photography.



CAMERA CLUB

FRENCH CLUB



OFFICERS

DONALD OAKLEY	President
HUGH COOMBS	Vice-President
REBECCA CRAIG	Secretary
JANE KIER	Treasurer
PROFESSOR HOYT	Sponsor

Through interesting and sometimes humorous programs, the French Club helps students acquire a working knowledge of the French language.



OFFICERS

RICHARD McINTOSH	President
SHIRLEY SCHAEFER	Librarian
WARREN PURDY	Librarian
MISS BATSON	Sponsor

In the Debate Club students find practical experience in applying the principle of argumentation and debate.

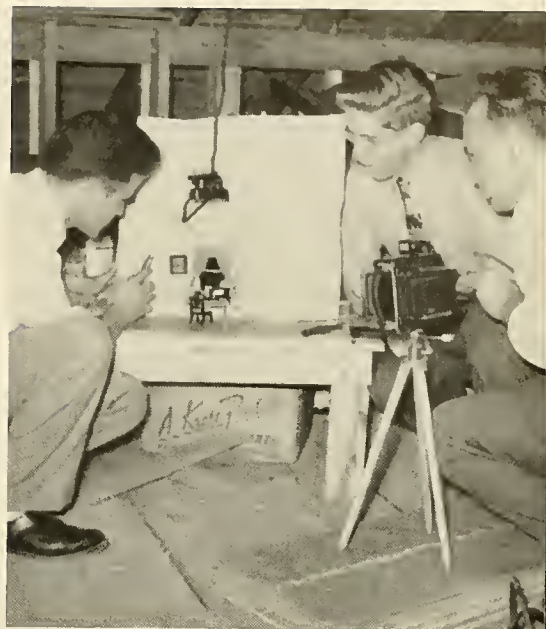
DEBATE CLUB



COMMONER STAFF

STAFF

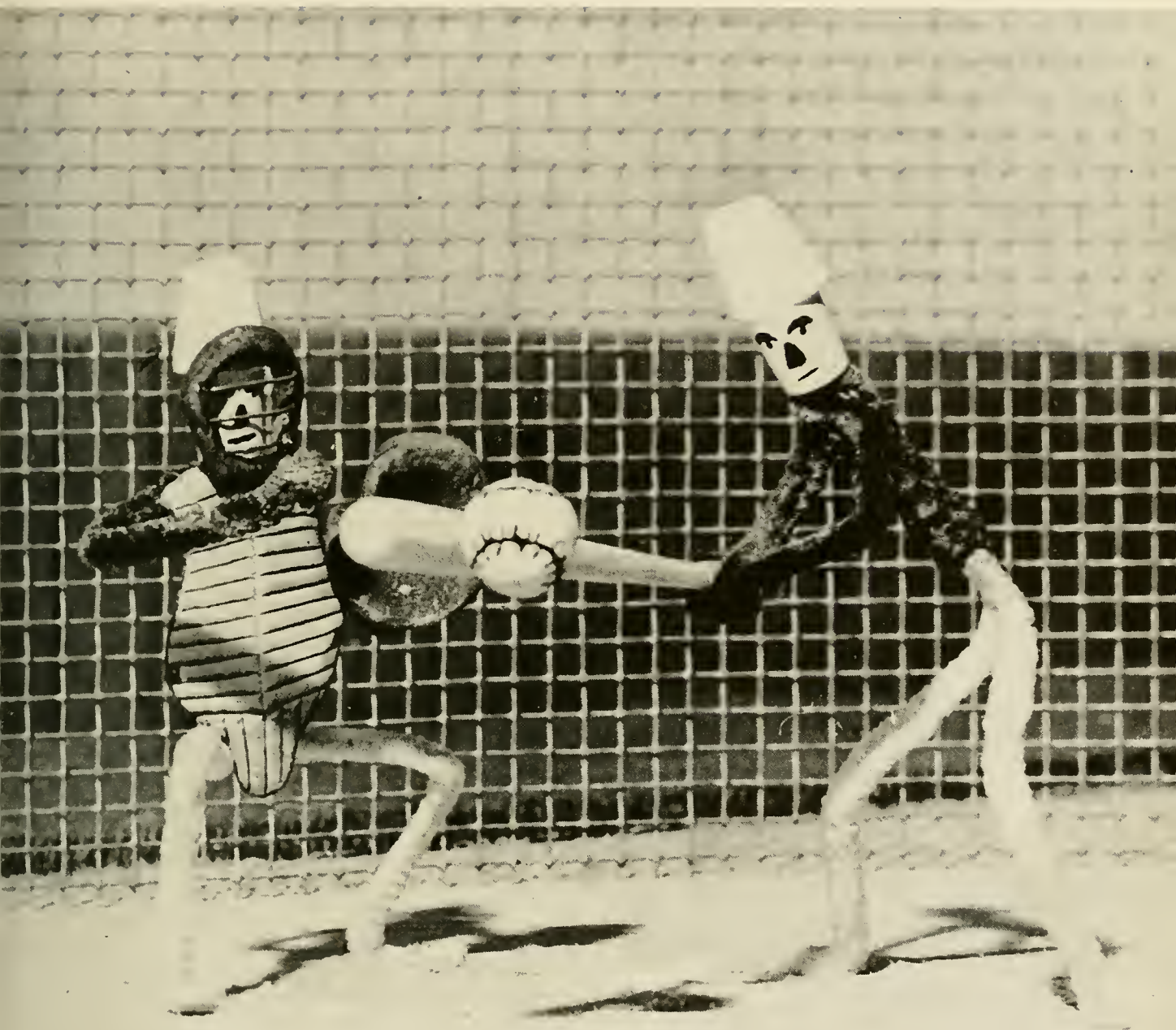
CHARLES TABER Editor
ROSELYN FRANKLIN Assistant Editor
JOHN REED Art Editor
RICHARD MAYCUMBER Photograph Editor
EDWARD GREENWOOD Business Manager
CARL WONDERLY Assistant Business Manager
MORRIS MORGAN Assistant Business Manager
JOEL KETTENRING Circulation Manager
MARGARET LOFTICE Typist
ALMA AUSTIN Typist
PROF. WILLIAMSON Adviser





F A M I L Y G R O U P S

It is not only the student and the faculty that constitute the Bryan Family. The wives and children of a number of students and faculty members, although they hold no official connection with the school, contribute much to the morale, the spiritual life, and the social life at Bryan.



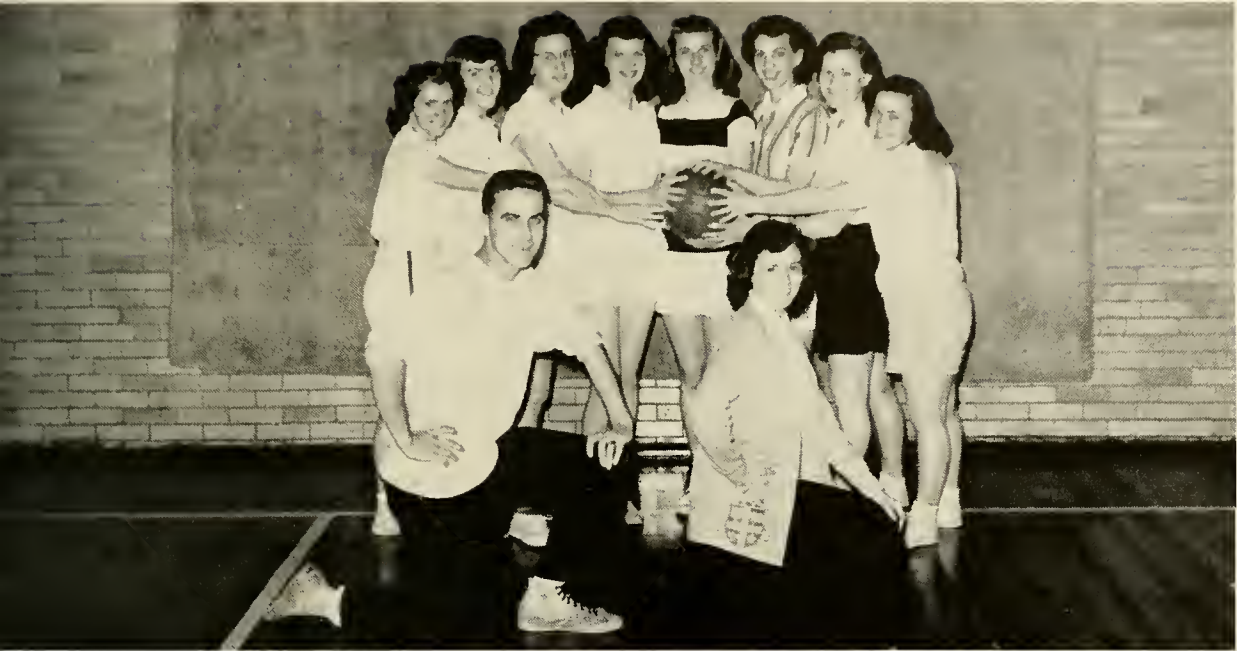
Sports

B A S K E T



T H E S C A R L E T S

B A L L



T H E G O L D S

B A S K E T B A L L

An annual event at Bryan is the hotly contested hardwood tournament between Scarlets and Golds. In addition, this year has seen the introduction of independent competition in a Girls' League and a Sunday School League in Dayton.



V O L L E Y B A L L

Volleyball is another favorite among the fellows and girls here. Besides the organized and impromptu games, there is each year a Scarlet-Gold tournament.





T O U C H F O O T B A L L

Fall is the season for football, and although Bryan has no intercollegiate competition in this sport, many would-be Justices and Harts enjoyed the inter-class touch-football games. This year it was the Sophomores who carried off the trophy.



S O F T B A L L

Inter-class softball shared the fall spotlight with football, and will be resumed in the spring. In spite of tough competition, the Juniors were undefeated in the fall season.



TRACK AND FIELD DAY

This year, for the first time in a number of years, Bryan is entering into the field of intercollegiate athletics. The track team is working out under the able direc-

tion of Professor Vos, and although many handicaps have hindered the team in its progress, there is a cheering atmosphere of optimism among the athletes.





Activities



F O R E N S I C A N D

Scarlet and Gold competition is not restricted to athletic events, for each year there is rousing competition in Forensic activities.

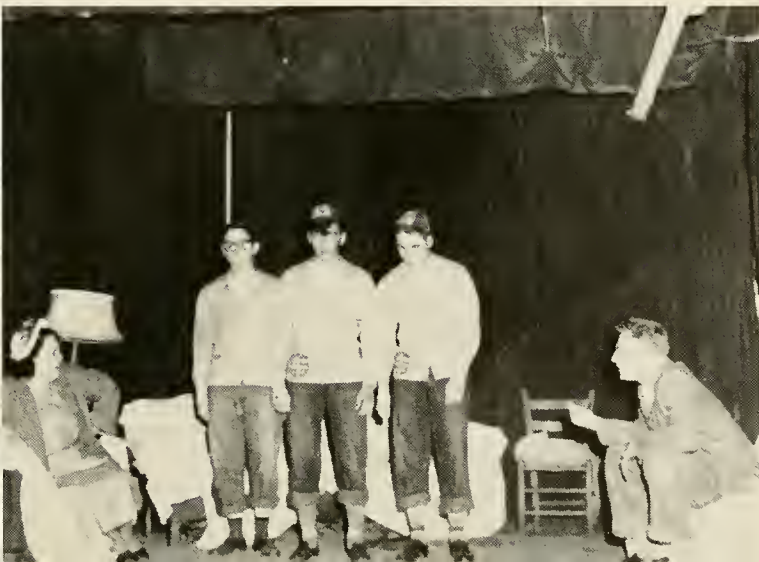




H U M O R O U S P R O G R A M S

Impromptus, extempores, book reviews, orations, dramatic readings and poetry, spelling, and humorous programs are the

events usually contested. This year, for the first time, the Forensic Union has been host to these contests.



BANQUETS AND PARTIES



Thanksgiving Banquet, Christmas Banquet, and Bryan Birthday Banquet are traditions of much significance. Hard work on the part of various committees and the boarding department makes these

formal banquets a real part of our heritage at Bryan. There are also many more informal parties and get-togethers where we have a good time letting off a little steam.





Then there is our traditional time of Campus Clean-Up in the early spring. Blisters, sun-and-wind-burned faces, aching muscles, and a spotless campus are the proofs of hard work, but there are

also many times of fun and fellowship among students and staff members as everyone relaxes from classes and general routine.





V E S P E R S A N D C H A P E L

The main emphasis at Bryan is, of course, spiritual. Inspiration and edification for all are found in daily chapel services, where God's servants from all over the world bring us challenging messages

from God's Word. Traditional programs are the Sophomore vespers, given each month, and the annual Bible Conference and Missionary Conference.

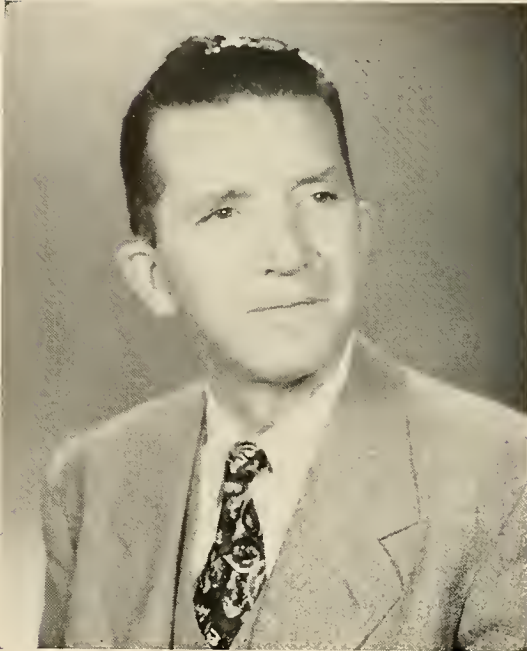


Ἰησοῦς σώζει



Faculty

JUDSON A. RUDD
A.B., M.A., LL.D.
President, Professor of Mathematics.



DWIGHT W. RYTHUR
B.S.C., M.A.
Executive Vice-President and Dean, and
Professor of English.

The Administration

LLOYD E. FISH
B.A., M.A.
Vice-President and Treasurer, Professor of
Mathematics and Physics.



WILLARD ARCHER
Executive Secretary.

Faculty

NORMAN H. UPHOUSE

A.B., B.Th., M.Th., M.A.

Dean of Men, and Professor of Bible.

ALMA F. RADER

Dean of Women and Instructor in Bible.

EARL WILLIAMSON

Th.B.

Comptroller and Instructor in Bible.

LOIS L. WEYHE

B.A.

Registrar.



GLEN C. ATKINS

B.S., Th.M.

Assistant Professor of New Testament Greek and German.

BEATRICE BATSON

B.A., M.A.

Associate Professor of Christian Education and History.

LESLIE J. DIXON

B.S., M.S.

Associate Professor of Chemistry.

MARY A. GREEN

R.N., A.B., M.N.

Instructor in Mathematics.

Faculty

WILLIAM D. GREEN

Th.B., A.B., M.A.

Assistant Professor of Bible
and Education.

CAROL J. HALLOIN

B.S.

Instructor in Biological
Sciences.

GARNER E. HOYT

B.A., B.D.

Associate Professor of French
and Linguistics.

M. Q. MCGOWAN

B.M., M.M.

Instructor in Music.



PETER I. R. SKANSE

B.S., M.A.

Instructor in Spanish and Mis-
sions.

PAUL DONALD STOCK

Associate Professor of Music.

EMMAGENE B. VOS

A.B., B.M.E.

Instructor in Music.

HOWARD H. VOS

A.B., Th.M., Th.D.

Assistant Professor of Archae-
ology and History.

Staff

MRS. LLOYD E. FISH

B.A.

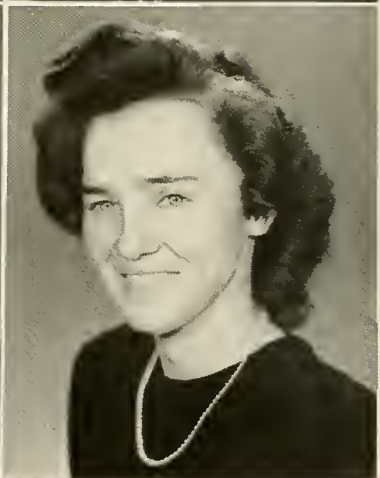
Assistant in Stewardship

HERBERT W. HILL

Manager of the Boarding Department

MRS. HERBERT W. HILL

Dietician and Hostess



MRS. LAUREN HOYT

Secretary to the President

ARCHIE B. KEFFER

Superintendent of Building Construction

ILA RUTH MAHR

B.A.

Secretary to the Executive Vice-President and Dean

Staff

ZELPHA RUSSELL
B.A.
Assistant in Stewardship



WALTER F. TIMMERMAN
Superintendent of Home Construction



MRS. EARL WILLIAMSON
Supervisor of Printing and Mailing



HOWARD O. ADDLEMAN
Supervisor of Dairy



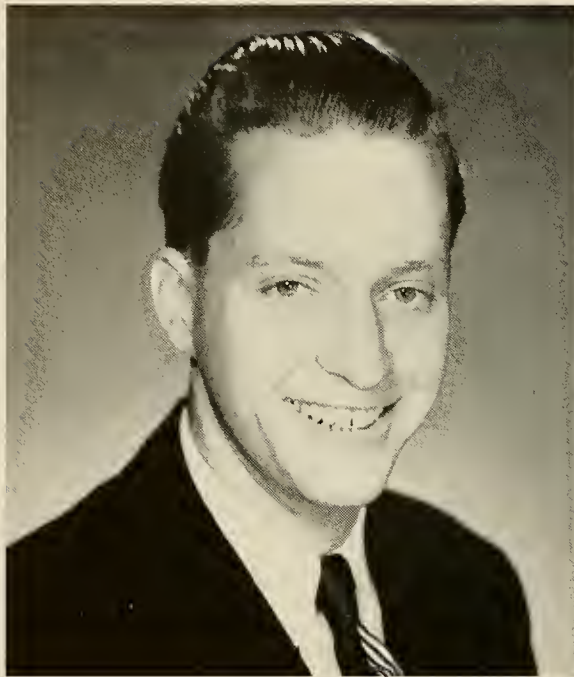
MORRIS G. E. MORGAN
Supervisor of Maintenance



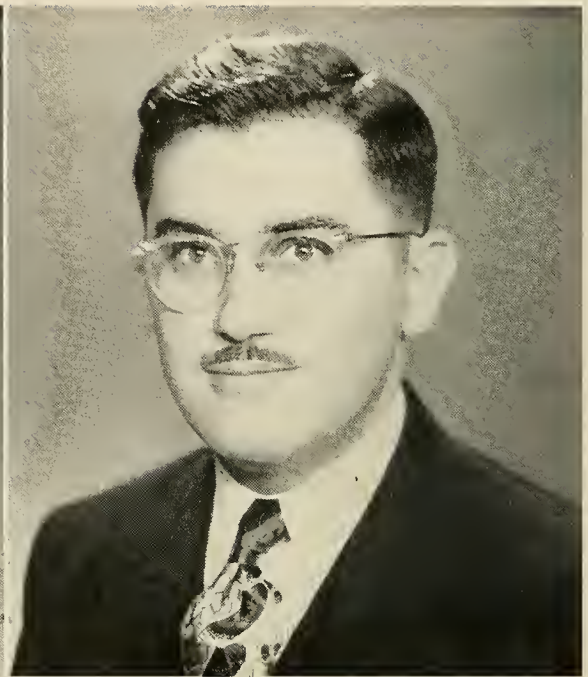
DOROTHEA NICHOLSON
R.N.
University Nurse



Classes



IAN HAY



LAMAR MODERT

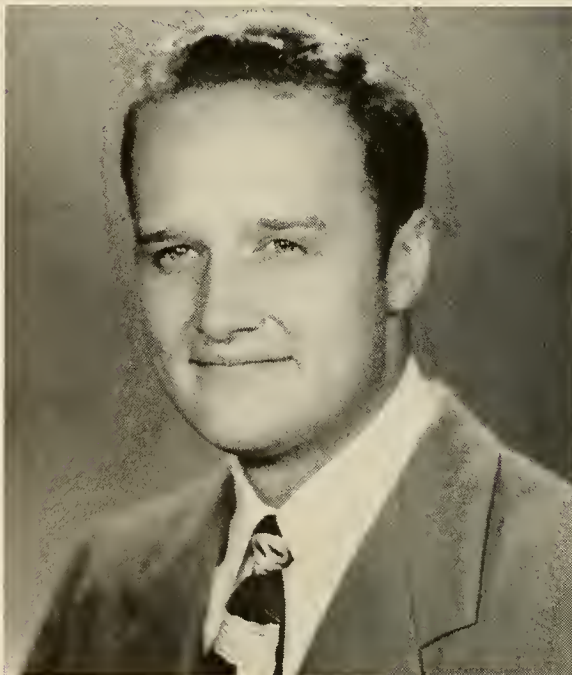
WHO'S WHO

IN AMERICAN COLLEGES
AND UNIVERSITIES

Who's Who Among Students in Colleges and Universities in America requires of the individual outstanding attainments in scholarship, leadership, character, and potentialities for future usefulness. Students who are chosen for this honor at Bryan have also made their spiritual influence felt on the campus.

DONALD OAKLEY

JACQUELYN OAKLEY



- EDWIN B. COCKRILL, Winona Lake, Indiana; Bible Major; Child Evangelism, 1,2,3, President, 3; Vetsville Committee, 3; COMMONER Staff, 3; Business Manager, Senior Class, 4.
- LESTER DAWN FARRINGTON, Dayton, Tennessee; English Major; Pastors' Fellowship, 1,2; M.S.M. Committee, 4; COMMONER Staff, 3; Class Vice-President, 4.
- GLEN FREDERICK SCHWENK, LaPorte, Indiana; History Major; Pastors' Fellowship, 1,2; C.S.A. Council, Chairman, 3, Class Treasurer, 1, 2, 3, 4.



- ROBERT EARLE MURPHEY, Willoughby, Ohio; English Major; F.M.F., 3,4; Class President, 4; Band, 4.
- JOYCE FAE HAWTHORNE, Richmond, Virginia; English Major; F.M.F., 1,2,3,4; Child Evangelism, 1,2,3,4; Class Secretary, 4.

Seniors

Seniors

- ROGER WILLIAM BACON, Buffalo, New York; Bible Major; F.M.F., 1,2,3,4; Choir, 1; French Club, 3,4.
- JACQUELINE ANN JONES, Dayton, Ohio; English Major; Child Evangelism, 1,2,3; Choir, 4; Class Secretary, 3; Gold Secretary, 3; Archery Club, 3; F.M.F., 3.



- G. DALMAIN CONGDON, Des Moines, Iowa; English Major; Pastors' Fellowship, 1,2, Vice-President, 2; F.M.F., 3,4, Vice-President, 4; Child Evangelism, 3,4; COMMONER Staff, Art Editor, 3; Choir, 1,2,3; Class President, 3.
- HUGH I. COOMBS, Wilkes-Barre, Pennsylvania; Language Major; Choir, 1; Pastors' Fellowship, 1; F.M.F., 4; Camera Club, 2; Forensic Union, 2; French Club, 3,4, Vice-President, 4.
- ARDELLE LAMAE COSTLEY, Davis, West Virginia; Biology Major; Child Evangelism, 2,3,4, Vice-President, 4; F.M.F., 2,3,4.

● DONALD WILSON FARNER, Ashland, Ohio; English Major; F.M.F., 1; French Club, 3.

● DOROTHY ELIZABETH FRANCE, Greenback, Tennessee; Language Major; Lay Ambassadors, 3; French Club, 3,4; Basketball, 1.

● BENJAMIN OLIVER CRUMP, Richmond, Virginia; Bible Major; F.M.F., 2,3,4; Archery, 3; Vesper Committee, 2; Track, 4; Child Evangelism, 2,3.



● LAVANA FULLER, Arlington, Texas; English Major; Choir, 1,2,3; Child Evangelism, 1,2,3,4; Lay Ambassadors, 3,4; Vice-President, 4; Basketball, 1,2,3.

● PAUL ROBERT GILLESPIE, Dayton, Tennessee; History Major.

Seniors

Seniors

● DELLA ELAINE HUCK, Brighton, Illinois; English Major; Child Evangelism, 1,2,3,4; Secretary, 4; F.M.F., 3,4; Lay Ambassadors, 1,2; Archery Club, 1,2,3; Vice-President, 3; Choir, 1,2,3,4; Gospel Singers, 2; Basketball, 1,2.

● IAN MORELAND HAY, Dayton, Tennessee; English Major; Choir, 1; Gospel Singers, 1; Camera Club, 1; Treasurer, 1; Forensic Union, 1,2,3,4, President, 3, Parliamentarian, 4; F.M.F., 1,2,3,4, President, 3, Vice-President, 2; President, Southeastern Regional F.M.F., 4; Student Council, President, 3; Who's Who, 4.



● JANICE IRENE GOEHRING, Evans City, Pennsylvania; English Major; F.M.F., 3,4; Choir, 1,2; Gospel Singers, 1; French Club, 3; Lay Ambassadors, 1,2.

● HAROLD HUGH GOEHRING, Evans City, Pennsylvania; History Major; Student Council, 1; Gold Sports Captain, 1,2,4; M.S.M. Committee, 3; COMMONER Staff, Editor, 3; F.M.F., 3,4.

● LINN FULTON LOSBOUGH, Dayton, Tennessee; Bible Major; Pastors' Fellowship, 3,4, President, 3; Transferee from Wheaton College.

● E. LAMAR MODERT, Bronson, Michigan; Mathematics Major; F.M.F., 1,2,3; Science Club, 2,3,4, President, 4; Forensic Union, 2,3,4; Student Instructor, 4; Who's Who, 4.

● GLADYS LOUISE JENNEWAIN, Cincinnati, Ohio; English Major; Child Evangelism, 3,4; F.M.F., 1,4; Forensic Sports, 1,2,3,4; Forensic Union, 1,2; C.S.A., 2,4.

● DAVID MAURICE LARSON, Silver Springs, Maryland; Bible Major; F.M.F., 1; COMMONER Staff, 3; Choir, 1; Pastors' Fellowship, 2.



● JANET IRENE NORCZYK, Ontonagon, Michigan; English Major; Lay Ambassadors, 1,2,3,4; Forensic Activities, 1,2; Child Evangelism, 1.

● VERNON WILMER KOESTER, Sheffield, Iowa; Bible Major; Pastors' Fellowship, 1,2; Choir, 1,2,4; C.S.A., 1,2,3,4; Camera Club, 1; Band, 4.

Seniors

Seniors

● JACQUELYN RUTH OAKLEY, Portsmouth, Ohio; Language Major; Camera Club, Secretary, 1; Lay Ambassadors, 1; F.M.F., 2,3; Student Instructor in Spanish, 3; French Club, 4; Choir Accompanist, 2,3; Who's Who, 4; Gospel Singers, 1,3; COMMONER Staff, Associate Editor, 3.

● DONALD CHILTON OAKLEY, Portsmouth, Ohio; Language Major; Class President, 2; French Club, President, 4; F.M.F., 2,3; M.S.M. Committee Chairman, 3; Gospel Singers, 3; Who's Who, 4.



● EMILY JANE PHILLIPS, Charleston, West Virginia; English Major; Child Evangelism, 3,4; C.S.A., 3,4; Forensic Union, 4; Co-Captain of Gold Forensic Program, 4; F.M.F., 3,4.

● RICHARD DELMAR TEVEBAUGH, E. St. Louis, Illinois; English Major; Class President, 1; F.M.F., 1,2,3,4, President, 4; Forensic Union, 4; Child Evangelism, 1; Vice-President Southeastern Region of F.M.F., 3.

● BRUCE A. BRICKEL, Rittman, Ohio; English Major; Forensic Union, 1,2,3; Pastors' Fellowship, 1,2,3; Camera Club, 1; Basketball, 1,2; Choir, 2.

● CHARLES B. RILEY, Verona, New Jersey; Biology Major; F.M.F., 1,2; Track, 4; COMMONER Staff, 3, Circulation Manager; Class Business Manager, 3; Young Life Work.

● SUZANNE MILLER, Winona Lake, Indiana; English Major; Forensic, 1,2; Child Evangelism, 1,2; F.M.F., 1,2; Basketball, 1,2,3,4; Athletic Committee, 4; Student Council, 4; Choir, 1.

● THELMA MAUDE ZIEGLER, Wellington, Ohio; English Major; Lay Ambassadors, 1,2; F.M.F., 4; Child Evangelism, 1,2.



● ROBERT BERNARD ROSENAU, Elyria, Ohio; History Major; F.M.F., 1,2,3,4; Class Vice-President, 1; Child Evangelism, 3.

● JOHN RICHARD SPRINGER, Altoona, Pennsylvania; History Major; French Club, 3,4.

Seniors

Seniors

- OTHEL HARDIN SULLIVAN, Fairview, Tennessee; Language Major; Forensic Union, 1,2; Camera Club, 1,2; French Club, 3,4; Basketball, 1,2,3,4.
- FRANCIS MARION BRILL, Winchester, Virginia; Bible Major; Pastors' Fellowship, 4; Forensic Union, 2,3,4, Treasurer, 3, Sergeant-at-Arms, 4; Choir, 1,2; Orchestra, 2; Band, 4; Science Club, 3,4; Child Evangelism, 3; C.S.A. Council, 3.
- DOROTHY FERN SCOVILLE, Elyria, Ohio; English Major; Child Evangelism, 1,2,3; F.M.F., 2,3; Forensic Union, 2,3,4.



- VIRGINIA BELL SMILEY, Englewood, Colorado; English Major; F.M.F., 1,2,3,4, Secretary, 2,3; Secretary of Southeastern Region F.M.F. 4; Student Council 3; Secretary, COMMONER Staff, 3; Child Evangelism, 1,2,3,4, Program Chairman, 2; Choir, 1; Class Secretary, 1,2.
- R. WAYNE SNIDER, Roaring Spring, Pennsylvania; History Major; Student Council Vice-President, 4; M.S.M. Committee, 4; Science Club, 2,3,4; Secretary, 4; Basketball, 1,2.

J u n i o r s

FIRST ROW

Lauren Hoyt

Mildred McBride

Alma Austin

Roy Clark

Robert Davis

June Bell

SECOND ROW

William Caraway

Hugo Gingrich

Edward Greenwood

Roselyn Franklin

Lois Gow

Betty Hanna

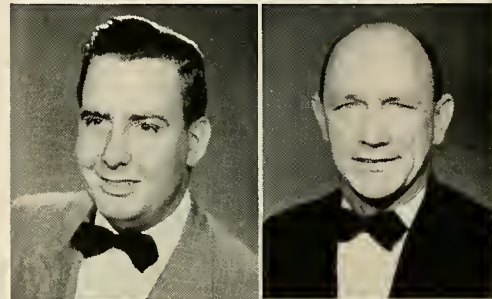
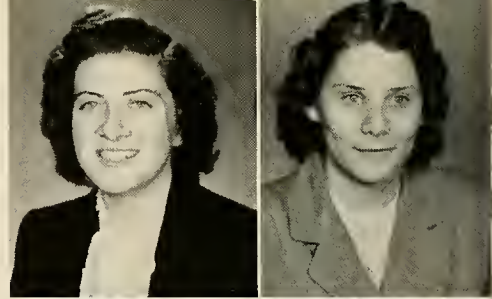


T h e

FIRST ROW

Grace Harer

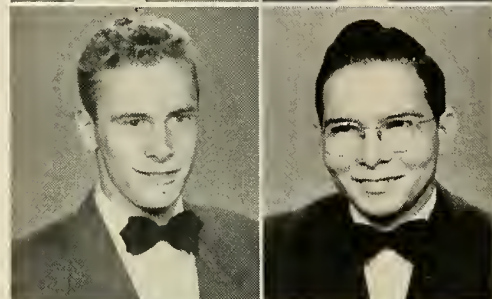
Margaret Hooks



SECOND ROW

Calvin Jaynes

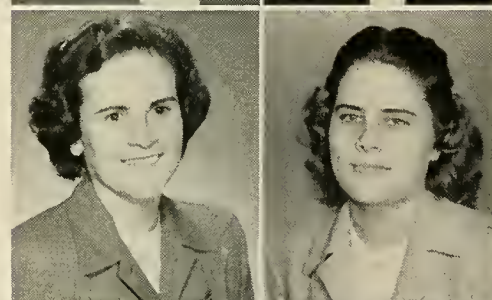
Archie Keffer



THIRD ROW

Joel Kettenring

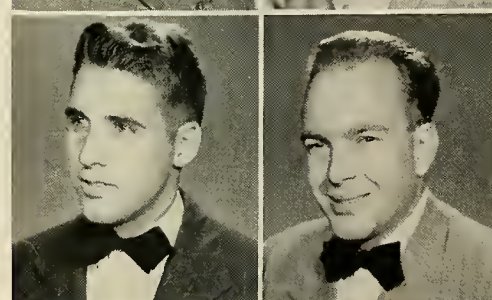
Charles Kirtley



FOURTH ROW

Dorothy Krautter

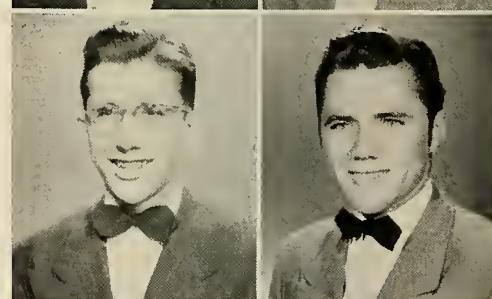
Margaret Loftice



FIFTH ROW

Donald McClintick

Richard Maycumber



SIXTH ROW

Leonard Meznar

Bill Monn

J u n i o r s

FIRST ROW

Edwin Moreland

David Naff

Emily Nicholson

Morris Morgan

Leslie Napier

Betty Jo Prust

Dorothea Nicholson

SECOND ROW

Warren Purdy

Ruth Sutton

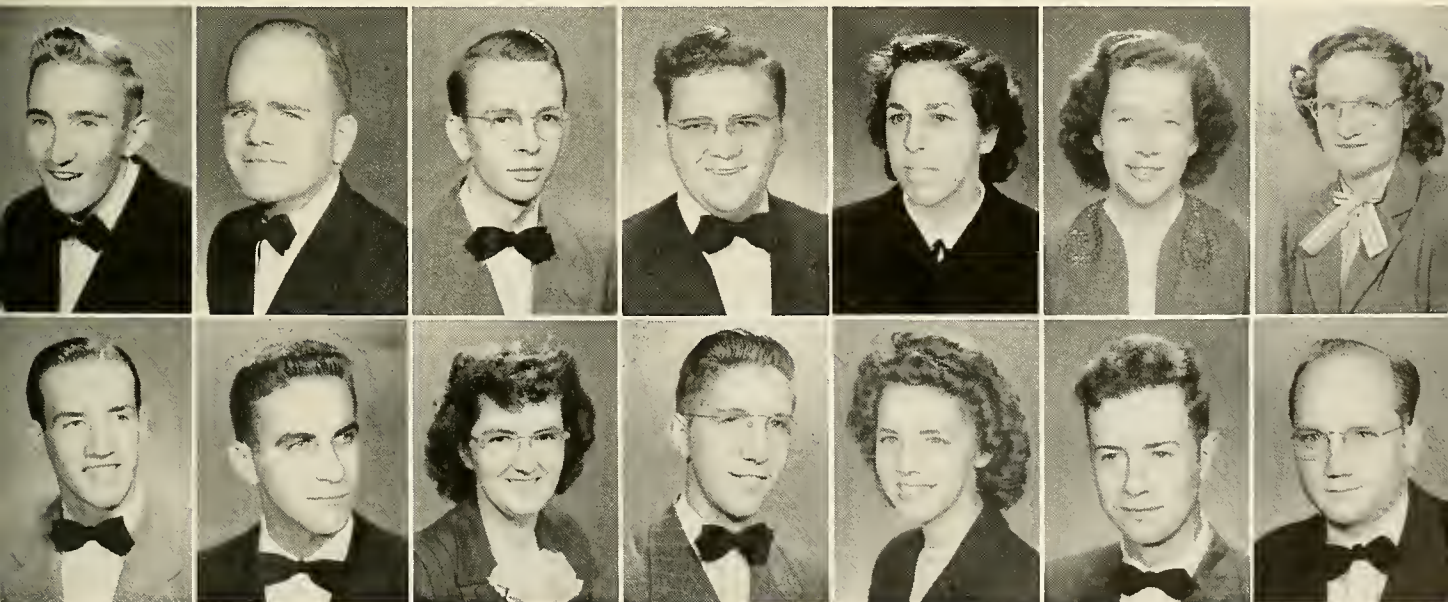
Carl Wonderly

John Reed

Charles Taber

Robert Yunker

Alda May Williams



T h e

Richard McIntosh

Ronald Meznar

Grace Coventry

Maxine Lykens

Donald Anderson

Thelma Andrews

Bonita Bacon

Cubelle Bauer

Leona Bell

Robert Bryant

Doris Bunch

Ruth Bunch

Dolores Bushart

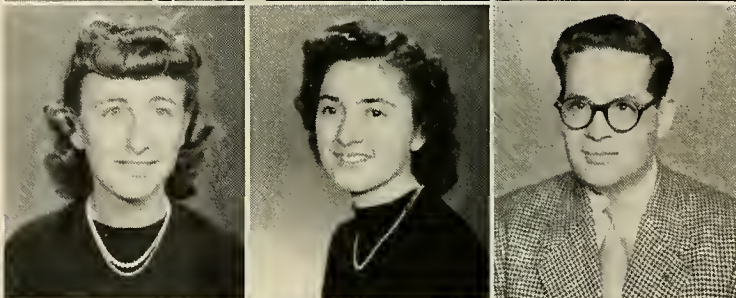
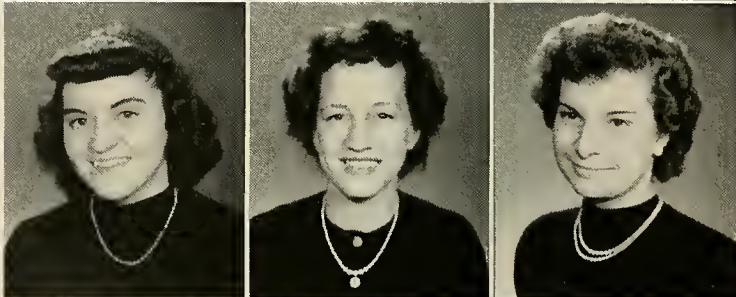
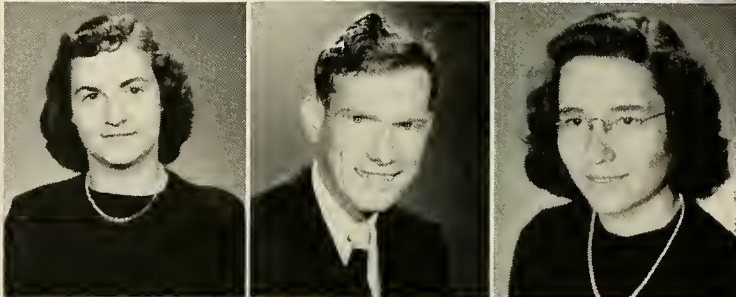
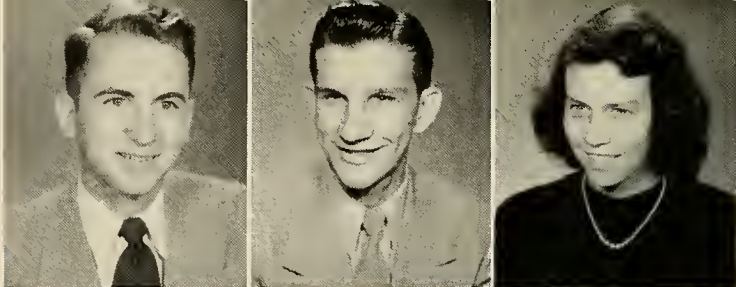
Roberta Butler

David Cook

Joyce Cooper

Iona Costley

Rebecca Craig



S o p h o m o r e s

FIRST ROW

Glenn Crumley
Daniel Firebaugh

Wyman Firebaugh

Margarete Friedrich
Margaret Haight

SECOND ROW

Clifford Hanham
Sarah Healan

Virginia Healan

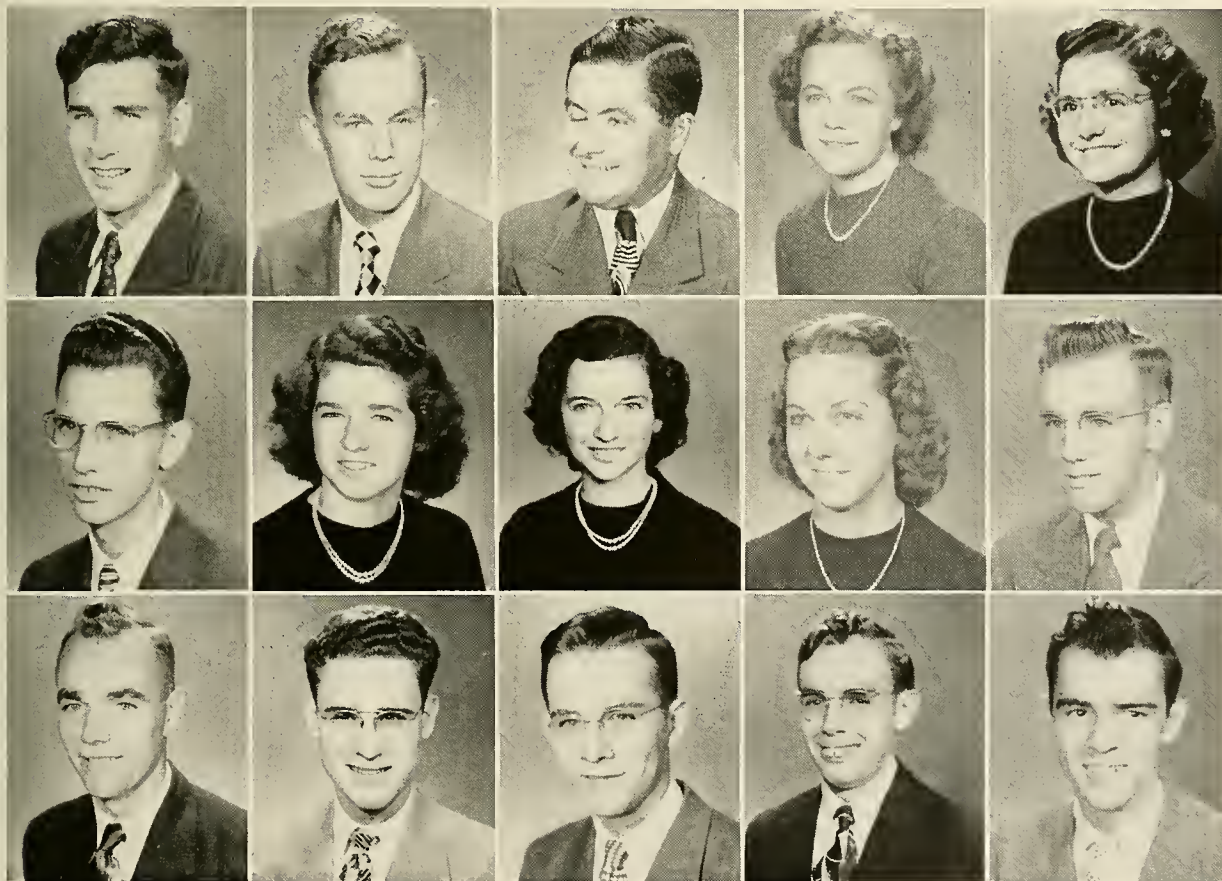
Charlotte Howell
Allen Jewett

THIRD ROW

Everett Kier
Ross King

Russell Konves

Ernest Lee
Albert Levengood



T h e

Robin McLeroy

Richard Malone

Evelyn Marks

Erris Martin

John Martin

Randall Maycumber

Dorothy Modert

Kenneth Moeller

Donald Monn

Raymond Newby

Frank Parker III

Arthur Pflug

Wayne Pontious

Norbert Prust

Jeanne Rodgers

William Roller

Shirley Schaefer

Ernest Schwenk



S o p h o m o r e s

FIRST ROW

Richard Shaffer
James Smals

John Stange

Jack Tate
Lois Teeter

SECOND ROW

Albert Volckmann
Lucy Williams

Robert Williams

Gene Witzky
Paul Wyland

THIRD ROW

Richard Ziemer

NOT PICTURED

Dee Ogden



T h e

Dean Koontz

George Huffman

Nanette Simpson

Howard Addleman

Verna Dell Abbott

Lois Ardelean

Wilson Baroody

Barbara Becker

Dona Blaine

Gloria Boise

Luther Brendle

Theodore Bricker

Janice Brown

Rose Marie Brown

Elizabeth Congdon

Fayth Conner

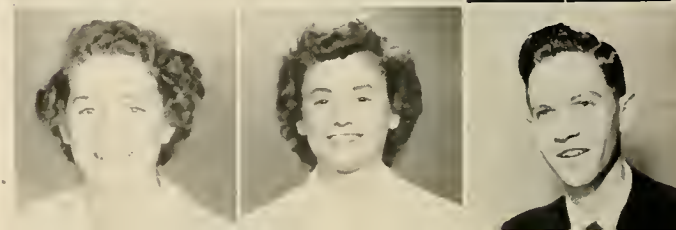
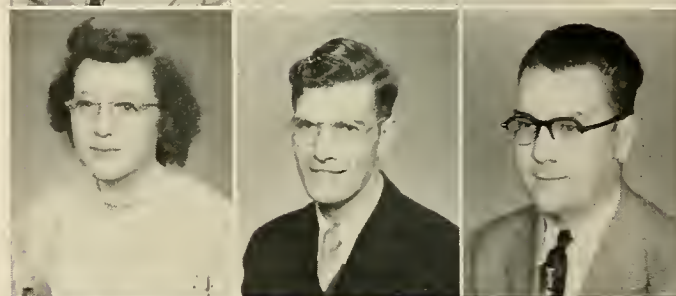
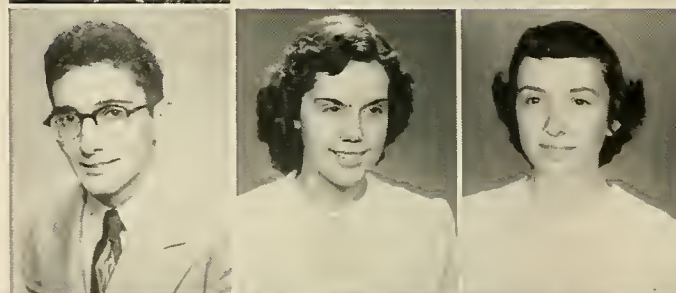
Juanita Coss

Joseph Cox

June Crommes

Lenora Dickens

Fred Donehoo



F r e s h m e n

FIRST ROW

John Edleston

Mary Grover

Wilma Hartley

Elizabeth Hockenberry

Bruce Harrison

Frances Henderson

SECOND ROW

Edythe Howsden

Norma Hubacher

Dorothy Jones

Dale Kelly

Mary Catherine Hunter

Ralfe Kaiser

THIRD ROW

Milton Kier

James Kirtley

Virginia Loffice

Leonard Maddy

Abigail Lacey

Willene McLeroy

FOURTH ROW

Alice Meiser

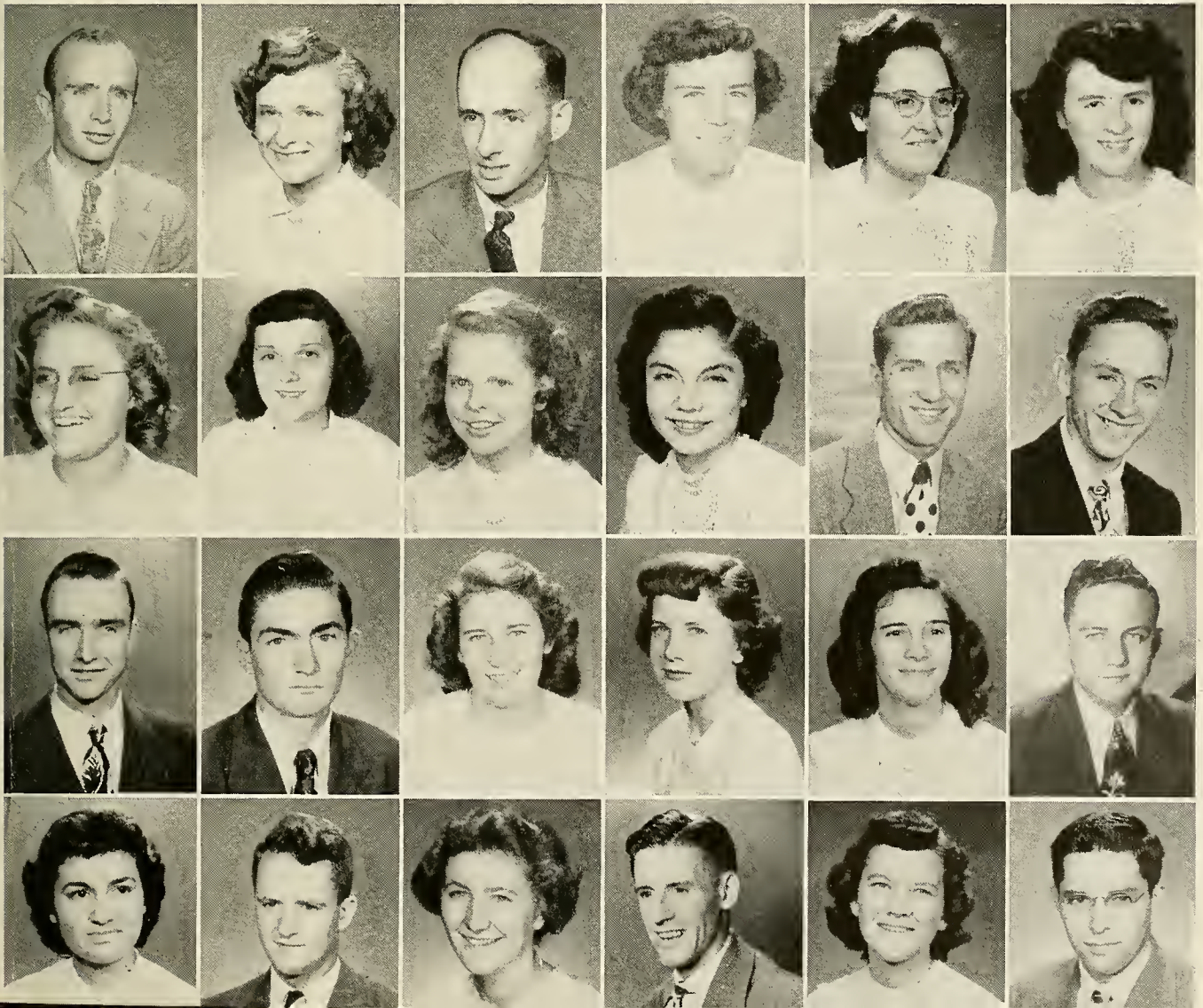
James Meyer

Roscoe Mulvey

Dean Piper

Mildred Mosby

Eloise Olcott



Freshmen

John Rathbun
 Beverly Reed
 Carlita Reynolds

Ryland Rock
 Ruth Joy Seltenright
 Wallace Sidback

Betty Smetters
 Glenna Smith
 Grace Smith

Jack Smith
 Mildred Snavelly
 Norma Sweeney

Jean Tempest
 Ruth Thompson
 Charles Thornton

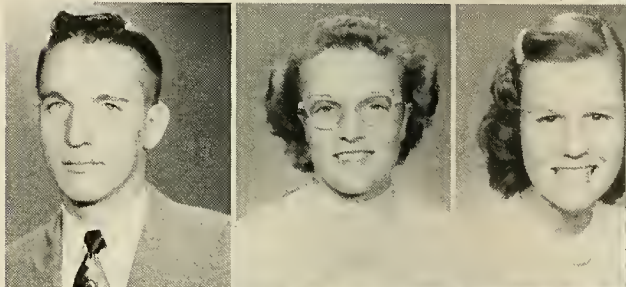
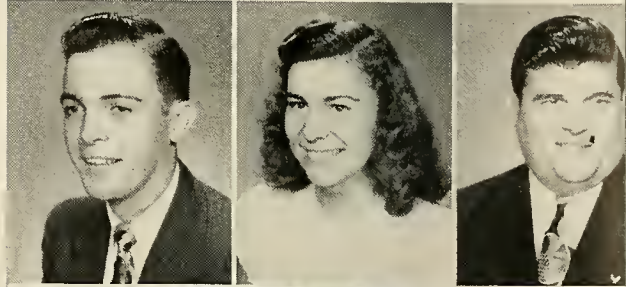
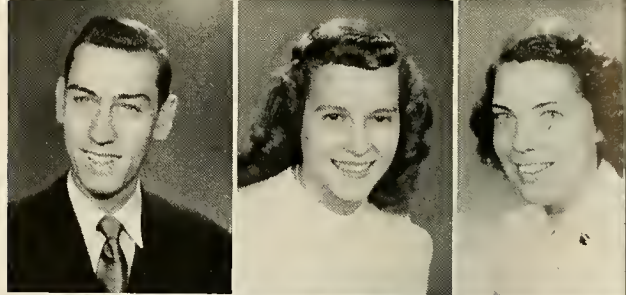
Donald Walker
 June Zehrung

•

SPECIAL STUDENTS

Iola Baker
 Shirley Horn
 Pauline Kettenring
 Jane Kier
 Mary Ellen Sullivan
 Nathan T'ung

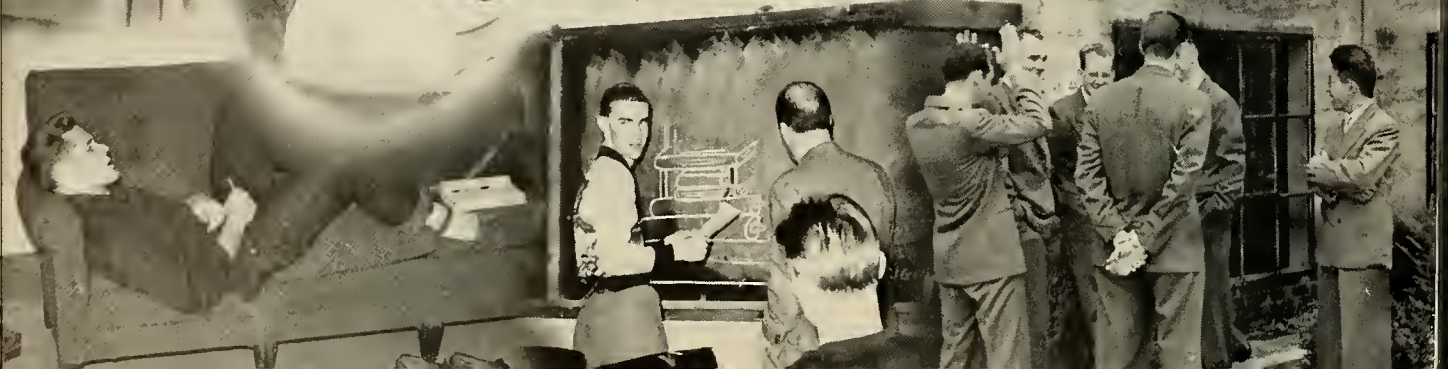
NOT PICTURED
 Elsie Sidback



OFFICE →
KITCHEN →

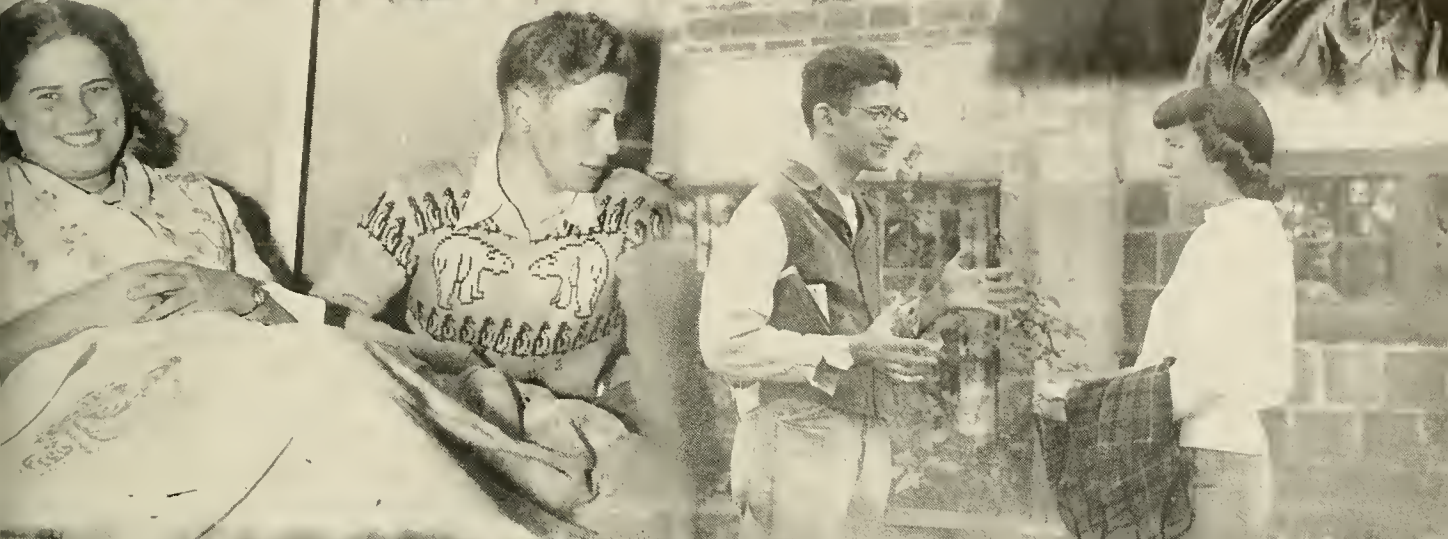


Smaps











We recommend your support of these concerns for they are dependable
and courteous. They support us, let's support them.

CARY & WEST CO.

Western Auto Associate Store

Furniture: Hardware: Auto Parts
General Electric Appliances
Phone 157 We Deliver Dayton, Tenn.

LOCKER PLANT FOOD MARKET

GROCERIES — VEGETABLES — FEEDS — MEATS

Phone 606

Dayton, Tennessee

ICELAND GARDENS, INC.

LOCKERS — PROCESSING — COLD STORAGE

Phone 606

Dayton, Tennessee

PURSER & KNIGHT

Shoes — Clothing

DAYTON, TENNESSEE

W. L. HODGES & SON

Jewelers

Repair Work A Specialty Dayton, Tennessee

**DAYTON DEPARTMENT
STORE**

Formerly Block's

Dayton's Leading Department Store

MRS. E. B. ARNOLD

Ready-to-wear

Dayton, Tennessee

Compliments of
LOCKE FURNITURE CO.

JOHNSON HARDWARE CO.
Bryan Students Always Welcome
DAYTON, TENNESSEE

JENKINS & DARWIN BROS.
Underpriced Merchandise
DAYTON, TENNESSEE

Faye G. Carney (Owner) Telephone 524-J
DAYTON FLORIST
Main Street Dayton, Tennessee

THE THRIFT STORE
Ready-to-wear Dry Goods
Phone 56 Dayton

Compliments of
KING'S ARMY STORE

MAYFIELD'S
JERSEY MAID
MILK ICE CREAM
MAYFIELD'S CREAMERY
ATHENS, TENNESSEE

Welcome
Make Our Home Your Home Away From Home
CEDAR HILL HOTEL
Phone 213R Dayton

M. SCHILD AND COMPANY
DAYTON, TENNESSEE

HY-WAY GARDENS
The Best In Flowers for all Occasions
But Reasonable
Phone 335

Compliments of
"SHIPWRECK" KELLY
Sheriff

BEN FRANKLIN STORE
MR. AND MRS. D. M. SHAVER, Owners
Phone 234

Compliments of
**DARWIN-SHARPE LUMBER
CO.**
DAYTON, TENNESSEE

F. E. ROBINSON COMPANY

"The Student's Drug Store"

It's Our Pleasure to Serve
Bryan Students

DAYTON, TENNESSEE
Phone 102

SPRING CITY, TENNESSEE
Phone 2861

OUR PHOTOGRAPHS
WERE BY

Duane

IDEAL CLEANERS AND LAUNDRY

SPRING CITY, TENNESSEE

Compliments of
RAGLAND-POTTER & CO., Inc.
Wholesale Grocers
CROSSVILLE, TENNESSEE

BRYAN UNIVERSITY BOOKSTORE

Bibles — Scripture Stationery
Christian Books — Plaques

KELLY'S LOG CABINS

One Mile North on U. S. Highway 27
Phone 364 Dayton, Tennessee

MASTER MIX FEEDS

FARMERS SUPPLY CO.

Seeds — Feeds — Poultry — Building
Supplies — Custom Grinding and Mixing

DAYTON, TENNESSEE

COMPLIMENTS
OF
**DAYTON BANK AND TRUST
CO.**

Member of
Federal Deposit Insurance Corp.

DAYTON, TENNESSEE
Your Business Solicited

F. R. ROGERS
DRUGGIST

Phone 200

DAYTON, TENNESSEE

Rexall Drugs

CITY MEAT MARKET

Phone 29

Located at Locker Plant
Food Market

Fresh Meat and Poultry

FRENCH FURNITURE CO.
FURNITURE — APPLIANCES
JEWELRY

Dayton, Phone 325

Spring City, Phone 4191

Two Stores

THE DAYTON HERALD

PRINTERS — PUBLISHERS

The Only Newspaper Published in Rhea
County

COMPLIMENTS

OF

A. M. MORGAN, D.D.S.

ARCHIE M. MORGAN, JR., D.D.S.

HAROLD A. MORGAN, D.M.D.

BETTY GREEN, R.D.H.

RHEA
EQUIPMENT CO.

TRACTORS — TRUCKS

REFRIGERATORS

PONTIAC CARS

—
Sales — Service

—
Phone 562

West Third Ave.

Dayton, Tenn.

FIRST BAPTIST CHURCH

DAYTON, TENNESSEE

REV. ROBERT E. LEE, Minister

Sunday School 9:45 A.M. Training Union 6:15 P.M.

Morning Worship 11 A.M. Evening Service 7:30 P.M.



TRINITY METHODIST CHURCH

C. R. ATHEARN, SR., Minister

GRAYSVILLE BAPTIST CHURCH

THAD P. OSBORNE, Pastor

CUMBERLAND PRESBYTERIAN CHURCH

REV. NORMAN UPHOUSE

FIRST METHODIST CHURCH

REV. C. L. WAGNER

COMPLIMENTS

OF

A FRIEND

Drink

The classic Coca-Cola script logo in a dark, bold font.

COCA-COLA BOTTLING WORKS

DAYTON, TENNESSEE

COLONIAL BAKING COMPANY

CHATTANOOGA, TENNESSEE

THE CINCINNATI CORDAGE & PAPER CO.

121 E. Jackson Avenue

KNOXVILLE 17, TENNESSEE

Telephone 3-0443

SALE CREEK
PRESBYTERIAN CHURCH
REV. EARL WILLIAMSON, Minister

BRAYTON BAPTIST CHURCH
ARCHIE B. KEFFER, Pastor

True to the Bible
Sunday School Lesson
HELPS

The "CHRISTIAN LIFE" Series treats on
Topics and Scriptures as given forth by the
International Uniform Lesson Committee

HELPS
for All Departments
Advanced scholars — Tiny Tots

Sample Copies

will be forwarded to
Sunday School Officials

Address

UNION GOSPEL PRESS
Box 6059
CLEVELAND 1, OHIO

GRADUATING STUDENTS
particularly will want to keep up
reading Christian literature.

**THE SUNDAY
SCHOOL TIMES**

contains just the diversified reading you
need, including helps on the International
Uniform Sunday School Lesson.

Special short term offer—22 weeks for \$1.

**THE SUNDAY SCHOOL
TIMES CO.**

325 North Thirteenth Street
PHILADELPHIA 5, PA.

Compliments of
A FRIEND

City Service
Station & Tire Co.
Esso Products
Atlas and Goodrich Tires
DAYTON, TENNESSEE



**ARNOLD
MOTOR CO.**
DAYTON, TENNESSEE

Phone 10
Your Friendly Ford Dealer

Cox & McClure
Motor Co.

DODGE-PLYMOUTH

Dodge Job-Rated Trucks

Phone 115

Dayton, Tennessee

BROWN CHEVROLET CO.

Sales — CHEVROLET — Service

Phone 228

DAYTON, TENNESSEE

**MORGAN MOTOR
COMPANY**

Your Oldsmobile Dealer

"Across from Post Office"

Telephone 167

153 West Main Street

Dayton, Tennessee

WALTERS BUICK CO.

Dayton, Tennessee

Phone 283

New and Used Cars

DAYTON SERVICE STATION

Your Good Gulf Dealer

Corner Market and Main

Dayton

SMITH BROTHERS

Home for Auto Parts

Wrecker Service

Phone 209

ELMER HARDIN GARAGE

Studebaker Sales — Service

Dayton, Tennessee

Phone 229

Compliments of

MILLS & LUPTON SUPPLY CO.

CHATTANOOGA, TENNESSEE

ARCHER PAPER CO.

CHATTANOOGA, TENNESSEE

**EAVES BADGE & EMBLEM
CO.**

T-Shirts — Caps — Pennants

823 Cherry Street

Chattanooga

INTERTYPE COMPOSING CO.

CHATTANOOGA, TENNESSEE

CHATTANOOGA RETAIL MERCHANTS ASSOCIATION

TEMPLETON JEWELER

MARTIN-THOMPSON COMPANY

LANSFORD PIANO COMPANY

THE SHERWIN-WILLIAMS CO.

WELCH'S TOURIST COURT & CAFE

U. S. Highway 27

Dayton, Tennessee

World's Largest Publishers

THIS BOOK DESIGNED AND PRINTED BY

Benson

PRINTING COMPANY ☆ NASHVILLE

of College Annuals

Highest Awards of Merit in Printing Exhibits of the
Southern Graphic Arts Association for Excellence in:

COLLEGE ANNUALS • HIGH SCHOOL ANNUALS • CATALOGS
BOOKLETS • CLOTH BOUND BOOKS • SALES PROMOTION PIECES

This page has been removed due to
privacy concerns.

This page has been removed due to
privacy concerns.



