




Special
LD
4481
. P665
. C3
1943
c. 2

ARONTAWAN
1943



Digitized by the Internet Archive
in 2011 with funding from
LYRASIS Members and Sloan Foundation

<http://www.archive.org/details/carontawan1943ye00mans>



Ex Libris





Presenting



the
1943
Carontawan

MANSFIELD STATE COLLEGE LIBRARY
MANSFIELD, PENNSYLVANIA





FOREWORD

Events come and go. But at least once in one's lifetime some event occurs that causes him to stop and reevaluate the factors influencing his development. So with the Carontawan! This present phase of an age-old conflict of ideas has made the staff pause to reconsider the worthwhileness of spending time and using valuable materials on a matter so trivial to the world at large. Yet if but would we smash the concept of the "world at large" into pieces where our minds can get a feel of its meaning, we find that it is the sum total of Carontawans and Congressional Records, Mansfields and Londons—a conglomeration of things, infinitesimal and huge. And from all this we emerge with one firm purpose, to keep alive those things which stand for normalcy, which typify a world not mad. We deem the Carontawan one of those things.

CONTENTS

Administration

Classes

Activities

Athletics

Advertisements

1943





dedication

*We dedicate this volume to the
men who have left this cam-
pus to serve a larger Alma
Mater.*



A decorative graphic consisting of two parallel red stripes with a white stripe in between, forming a wide, sweeping arc. Two red five-pointed stars are positioned on the upper red stripe, one on the left and one on the right. The graphic tapers to the right, ending in a small, curved tail.

The
COLLEGE



DR. WILLIS E. PRATT

A CAPABLE

“Wings for the Future”

James Matthew Barrie once said that “the reason birds can fly and we can’t is simply that they have perfect faith, for to have faith is to have wings.” Today, as never before, we need wings for the future. Wings that emerge from a faith in the future of America. A kind of faith that led fearless men to face hardships, and toil and hunger and death to build a nation for free men in a free land. A kind of faith that caused men to rush from their farms and homes to face the military might of a world empire to gain the principles of a democratic life for their children and for posterity. The kind of faith which burned in the heart of a tall, gaunt American who fearlessly dedicated his life to the cause of free men that “this nation should not perish from the earth.” For all these had faith—faith that gave them, too, wings for the future.



AND DEMOCRATIC PRESIDENT



Dr. and Mrs. Pratt will be at home.



*Mr James G. Morgan
Dean of Instruction*

Dean's Message

War disrupts schools as it disrupts every other social and political institution. You who are graduating have been more fortunate than those who have been called to serve in the armed forces of their country. During the last two years you have witnessed many changes in the peacetime program of your college and a tremendous transformation in the national economy as your nation girds for total war. Undoubtedly in the future many of your accustomed ways of life will also be disrupted. If your years at Mansfield have enabled you to achieve the intellectual insight and moral stamina to willingly face reality and to willingly make any sacrifice necessary to preserve democracy, you will give the surest guarantee to those whose efforts have guided you through four years of college the type of confidence that will keep and preserve our democratic way of life.

—James G. Morgan.



Our country and its allies in this great world war are approaching a crisis in the course of the struggle. The fight for the preservation of freedom and democracy must be won. The enormous effort required to maintain our various forces affects the daily lives of each of us. We shall be called upon to do without certain things. Many and varied tasks will come our way. Effective and thorough preparation for the various responsibilities of life is especially essential now.

This is a time which tests the character and stamina of all of us. May each student, faculty member, and our entire college respond whole-heartedly to the calls of this great cause confident that, in the course of future events, right and freedom will prevail and institutions founded upon these principles will stand.

PAUL J. STEELE,
Dean of Men.

During these critical months many women students have evaluated in terms of their own personal problems these questions "Should I remain in college?" "What is the value of a college education to me?"

Your college diploma is a symbol of work completed. It is a symbol that you are qualified to take your place in the world's work. Today as always it is an essential tool. The time for women students to drop education has not come. Our personal ambitions certainly should be secondary, but we should not sacrifice now unnecessarily a talent of a skill which may enable us later to render a far greater service.

In the future the nation will need more than ever before citizens trained to think. A college education strives toward this goal. If through your college education, you are developing your mind, your character, and your resources so as to understand and to face the present crisis, to act as a responsible citizen, to realize the price to be paid for the survival of this nation and for the security, freedom, and opportunity which we enjoy, and to become a successful teacher, you are rendering a valuable service to the nation and to your profession and are justifying the continuance of your education.

DOROTHY M. WASLEY,
Dean of Women.



Dr. Paul J. Steele, Dean of Men



Miss Dorothy M. Wasley, Dean of Women



Faculty



HUGH W. ALGER—A.B. (Yale), M.S. (Temple), Supervisor of Science, Junior High, ELIZABETH S. ALLEN—B.S. (Mansfield), M.A. (Columbia), Assistant Dean of Women, NELLIE M. ASHENFELTER—B.S. (New York), Ed.M. (Temple), Supervisor of Music, Campus Schools, CORA A. ATWATER—Mus.B. (Chicago Conservatory), Instructor in Voice, EUGENE P. BERTIN—A.B. (Bucknell), M.A. (Harvard), Director of Secondary Education and Extension Education, LEONARD K. BEYER—B.S. (Bethany), M.S. (Cornell), Instructor in Biological Science, MARGARET BONE—B.S. (Bloomsburg), Ed.M. (Pennsylvania State), Supervisor of Grade One.

MARJORIE C. BROOKS—B.S. (New York), M.A. (Eastman), Director in Music Theory and History, LILLIAN E. BUCKINGHAM—B.S. (Pennsylvania State), M.S. (Cornell), Instructor in Foods and Family Health, JOHN W. CURE—Ph.B. (Bucknell), Ed.M. (Harvard), Instructor in Language and Literature, PAUL J. DAVIS—LL.B. (Dickinson), Instructor in History, ISAAC DOUGHTON—A.B. (Harvard), M.A.Ph. (Pennsylvania), Instructor in Philosophy of Education, C. AILEEN ERICKSEN—B.S. (Utah), M.S. (New York), Instructor in Clothing, Applied Design, and Consumer Education, MARYON FARRER—B.S. (Simmons), M.A. (Columbia), Instructor in Foods and Nutrition.

BERTRAM W. FRANCIS—B.M.E., Mus.M. (Northwestern), Director of Music Education, CHARLES S. GILBERT—B.S. (Nebraska), M.A. (Alabama), Instructor in History and Penmanship, J. ALEX GILFILLAN—Mus.B. (Eastman), Instructor in Piano and Music Theory, EMMA A. GILLETTE—A.B. (Allegheny), M.A. (Columbia), Instructor in Language and Literature, HERBERT GRANT—B.S., M.S. (Columbia), Instructor in Chemistry, JESSIE I. GRIGSBY—B.S., M.A. (New York), Principal and Supervisor of Mathematics (Junior High).

Faculty



MILDRED L. GRIGSBY—B.S. (Bucknell), M.A. (Columbia), Supervisor of Grade Six. CLYDE W. GWINN—A.B. (York), M.A. (Nebraska), Ph.D. (Peabody), Director of Student Aid. LORENE M. HABEGER—B.S. (Kansas Teachers), M.A. (Columbia), Supervisor of Grade Two. LEAH H. HANCOCK—A.B. (Illinois), M.A. (Columbia), Supervisor of Homemaking (Junior High). LEWIS HIGLEY—Mansfield Supervisor of Industrial Arts. RACHEL HINCKLEY—B. E. (Castleton), M.A. (Columbia), Supervisor of Grade Two. DOROTHY HUTCHINSON—B.S., M.S. (Pennsylvania), Supervisor of Grade Four.

FRED A. JUPENLAZ—B.S. (Mansfield), M.S. (Bucknell), Supervisor of Social Studies. JANETT LEBERMAN—B.S. (Simmons), M.S. (Colorado), Instructor in Related Science. S. MANFORD LLOYD—B.S. (Mansfield), M.A. (Columbia), Instructor in Mathematics. BERNARD MANDELKERN—Mus.E. (Ithaca Conservatory), B.S. (Ithaca College), M.S. (Pennsylvania), Instructor in Orchestra and String Instruments. HERBERT E. MANSER—B.S., M.A. (Columbia), Instructor in French and Supervisor of French (Junior High). EDNA P. MARSH—B.S., M.A. (Columbia), Supervisor of Grade Three. KIMBALL G. MARVIN—B.S. (Lafayette), M.A. (New York), Instructor in Health and Physical Education.

MAY M. MATSON—B.S. (Cornell), M.S. (Colorado), Instructor in Home Management and Child Development. LILLIAN W. MCKINNEY—B.S., M.A. (Peabody), Dietitian. JOSEPH J. MOORE—BS. (Franklin and Marshall), M.D. (Pennsylvania), College Physician. ELIZABETH B. MORALES—B.S., M.A. (Columbia), Director of Homemaking Education. JAMES G. MORGAN—Ph B. (Muhlenburg), M.A. (Michigan), Dean of Instruction. MARGARET R. MORRIS—A B. (Iowa Teachers), M.A. (New York), Instructor in Health and Physical Education.

Faculty



S. MARJORIE MURPHEY — B.S. (Edinboro), Ed.M. (Pittsburgh), Instructor in Art. MARGARET T. O'BRIEN—A.B. (Syracuse), M.A. (McGill), Supervisor of English (Junior High). EVELYN H. PALMER—B.S. (Mansfield), M.A. (Columbia), Homemaking Service Area Adviser. ELSIE R. PERKINS—Mus.B. (Chicago Musical College), Instructor in Voice. MARTHA G. PHIFER—A.B. (Converse), M.A. (Columbia), Supervisor of Grade Four. CLARISSA A. RANDALL—B.S., M.A. (New York), Instructor in Music Appreciation and Music Theory. GRACE M. REIMARD—B.S. (Pennsylvania State), M.A. (Columbia), Instructor in Homemaking in Senior High.

GEORGE A. RETAN—Ph.M. (Mansfield), B.F. (Pennsylvania State Forest School), Ph.D. (New York), Director of Elementary Education, Student Teaching and Placement. BLANCHE R. ROSS—B.S., M.A. (Columbia), Supervisor of Grade Three. FRANCES E. SCHIPBANKER—B.F.A. (Syracuse), Supervisor of Art (Elementary School). MARION E. SCOTT—B.S., M.A. (New York), Supervisor of Kindergarten. ELIZABETH P. STALFORD—B.S. (Bucknell), M.A. (Columbia), Supervisor of Grade Five. PAUL J. STEELE—B.S. (Davidson), M. S., Ph.D. (North Carolina), Dean of Men. CYRIL L. STOUT—B.S. (Knox), Ph.M. (Wisconsin), Ph. D. (Peabody), Instructor in Geography.

ELIZABETH M. SWAN—A.B. (Kentucky), M.A., Ph.D. (Virginia), Instructor in Literature. MARION C. VIZAY—Phi. B. (Chicago) M.A. (Columbia), Instructor in Clothing. LOREN A. WARREN—A.B. (McAllister), M.S. (Northwestern), Instructor in Orchestral Instruments. DOROTHY M. WASLEY—A.B. (Goucher), M.A. (Columbia), Dean of Women. MYRON E. WEBSTER—LL.B., J.S.D. (Cornell), Instructor in Social Studies. MARION WOOLCOTT—B.S., M.S. (Ohio), M.A. (Chicago), B.S. in Library Science (Western Reserve), Instructor in Library Science. MARY JANE ZEITERS—B.S. (Shippensburg), Ed.M. (Pennsylvania State), Supervisor Grade One.

Business Administration



HELEN V. BOWERS—Secretary to the Dean of Instruction. CHARLES DARRIN—B.S. (Mansfield), Director of Student Activities and Public Information. HELEN F. DIETSCH—R.N. (Battle Creek), College Nurse. DOROTHY BUNN HOWE—Book Store Clerk. EDNA HEWSON—(Geneseo, Elmira Business College, Gregg), Registrar. EDYTHA KEENEY—R.N. (Clifton Springs), Campus School Nurse. HATTIE L. KING—Matron.

CHARLOTTE L. NIXON—Account Clerk. JEANETTE NORTON—Secretary to Director of Campus Schools. BERTHA R. PALMER—Secretary to College Librarian. LAURA C. RHEBEIN—Secretary to Business Manager. MARIE MILLER SCHWAB—Secretary to Director of Music Education. CARMEN SCHREY—R.N. (Williamsport), College Nurse. KEN W. SMITH—Business Manager.

ROSS W. SOPER—Receiving Clerk. REA J. STEELE—Assistant Librarian. VICTORIA H. THIEMANN—Revenue Agent. LENORA VAN HORN—Secretary to Director of Homemaking Education. A. H. VOSBURG—Superintendent of Grounds and Buildings. DOROTHY WHITNEY—Account Clerk. MARGARET EVANS WILSON—Secretary to President of the College.

Home Making Department



*Mrs. Elizabeth B. Morales
Director of Homemaking Department*

On To Victory

“Victory for us means victory for the institution of democracy—the ideal of the family, the simple principles of common decency and humanity”.

—President Franklin D. Roosevelt.

Intelligent living on the home front is vital to victory. Those on the battle fields gain comfort, courage, confidence, and steadfastness from knowing that loved ones are carrying on with gallantry. Those on the home front are willingly and uncomplainingly conserving the materials so necessary to the war effort. The Homemaking Education Department has much to contribute to the intelligent use of these materials. Wise spending, careful saving, budgeting of time, money, and energy as well as adapting what is available to needs are problems which are evaluated. Discussion of such problems encourages individual resourcefulness and thereby helps to develop independent and constructive thinking in the solution of problems of living which are pertinent to the planning for national welfare and enduring victory.



Junior High School Lunch

During six weeks of their Junior year, groups of homemaking students manage the Junior High School Lunch under the supervision of Miss Farrer. Each member of the group has the experience of all the activities involved in carrying out a successful school lunch. This includes planning of meals, marketing, preparation and serving, and financial accounting with banking experience. Each student, when manager, plans the activities and time schedule for the other members of the group. All together, the manager has full responsibilities of carrying out the school feeding program.

High standards of food preparation and sanitation are the two main essentials kept in mind during this work. It is not set up on a money making basis, but is run to provide practice in solving school lunch problems for the college students and at the same time provide a nutritionally adequate and attractive, yet inexpensive lunch for the school children.

The school feeding program is an important part of the national nutrition program to provide adequate food for all. The school lunch is a real challenge under present conditions of increase in costs and rationing of food commodities.

Homemaking Apartment

Up to the junior year, courses taken by homemaking students consist of scheduled class and laboratory periods. One of the courses junior homemaking students take offers them an opportunity to show how they can blend the theories and practices learned during their first two college years and put them into actual high standard everyday family living. Being hostess, waitress, laundress, housekeeper, and in sole charge of meals, respectively, for an interval of several days challenges each student to make her best contribution as a student-family member. Groups range from seven to nine members, including a resident instructor, and the course continues through six consecutive weeks. All duties are rotated in order, so each student meets the same kind of responsibilities.

Since April, 1942, the home management groups have lived in the apartment built especially for them in the new Arts Building on the campus, and enjoy its modern and aesthetic features. Students who have professional interest, who esteem friendship and what it stands for, who like to share the work and pleasures of others, find this course an enriching experience.



Music Education Department

The Music Education Department of Mansfield State Teachers College has an excellent reputation for providing successful music supervisors for the Commonwealth of Pennsylvania and adjoining states. The graduates of the music department hold many prominent public school music positions throughout Pennsylvania, New York, and New Jersey. The success of these graduates is due in a large part to the thorough training they receive in a well-rounded course from a faculty of highly trained, artist teachers.

The music curriculum provides foundational training in music theory, singing, playing of the piano and performing on representative instruments of the orchestra and band. Most of our entering students bring with them a preference for certain of these forms of musical expres-



Mr. Mandelkern



Miss Randall



Mr. Bertram W. Francis, Head of Department

sion, especially those in which they already have some proficiency. This preference is readily turned to good account, for through the medium of proficiency in a given instrument the student is able to gain a degree of artistry which is necessary to the development of a music teacher.

In addition to classes in the cultural and theoretical aspects of music the student receives specialized training in the practical side of musical performance by membership in orchestra, band, chorus, and other ensembles.

The effects of the war have been felt keenly within the music department. Gerald Greeley, instructor in piano and organ, was called to active service in September. Nine music students were inducted prior to the opening of school, and twenty-five more students of the department were called to active service during the first and second semester.



Junior High School

The Junior High School serves the children in the seventh, eighth, and ninth grades of Mansfield and the surrounding township. To them it offers educational opportunities in one of the best equipped schools in the part of the state. To the college students it offers an opportunity to become proficient in their chosen profession through practice teaching. In addition to the academic subjects, such as English, social studies, science, and mathematics, there are modern departments offering constructive programs in health and physical education, music, art, homemaking, and industrial arts.





In the words of Miss Grigsby, principal of the Junior High School, "The school has two major purposes: first, to provide modern, progressive, educational facilities to the boys and girls of the community; second, to provide laboratory school experience for the college students. Here, under well-trained supervisors, college students in the secondary, music, and homemaking departments have opportunity to teach, to correlate, to evaluate, and to put into practice the educational theories and principles which they have acquired in college classes.



Junior High School Supervisors



Miss Grigsby, Miss Morris, Miss Gillette, Mrs. Higley, Miss Schipbanker,
Mrs. Ashenfelter, Miss Hancock, Miss O'Brien, Mr. Alger, Mr. Jupenlaz.

At the head of each department in the Junior High School, there is an efficient supervisor who has formulated definite aims for the program of that department.

Miss O'Brien: "Our aim in social studies is to build in boys and girls an informed citizenry, wisely loyal to the government which tries to secure for them the four freedoms."

Miss Gillette: "We aim to establish correct habits of speaking, writing, and reading; to develop self-expression, and to stimulate an appreciation of literature."

"Science aims," in the words of Mr. Alger, "to give information concerning our environment with interpretation and appreciation of it, and of the contributions made by scientists to it."

"Mathematics aims to enable pupils to meet such quantitative situations as they are likely to meet in life; to gain accuracy in the fundamental operations and understanding of the social uses of mathematics," said Miss Grigsby.

Mr. Jupenlaz: "The health and physical education program stimulates self-knowledge, self-discipline and a sense of fair-play. The post-war citizen must have a sound body, and alert mind and a clean soul."

The music program aims to develop an interest in music by means of participation, class work and appreciation.

Through industrial arts there is developed a coordination between mind and muscle, and a general knowledge of the activities of everyday life.

Homemaking education develops attitudes and abilities which aid in living more fully within a family group or community.

The aim of the art program: to promote a general aesthetic appreciation and attitude through working with various mediums.



Jessie L. Grigsby, Principal of Junior High School

Elementary Laboratory School

This school offers fine educational facilities from kindergarten through the sixth grade to the children of the district. The building, one of the newest on the campus, with its complete and modern equipment, is now one of the best elementary schools in the state. The educational offering includes all the traditional subjects of the curriculum plus music, art, and industrial arts departments. The laboratory school provides the children with a fine education for living, at the same time giving the college students in the elementary and music fields professional experience.



Dr George Retan, Director of Elementary Education

Supervisors



Standing—

Dr. Retan, Miss Keeney, Miss Bone, Miss Phifer, Miss Hinckley, Miss Ross, Mr. Higley.

Seated—

Miss Schipbanker, Miss Marsh, Miss Habeger, Miss Hutcheson, Miss Stalford, Miss M. Grigsby.

The supervisor in charge of each room has the double responsibility of teaching the children and acting as a guide to the student teacher. Each supervisor has a fine background of professional training and experience. Through her, the student teacher develops professionally in technique and personality.



The Association For Childhood Education



Front Row: Miller, Partchey, Jupenz, West, Roy, Casey, Haynes, Elliott, Hamilton, Bump.
Second Row: Rumsey, Criss, Farrer, Aten, Thomas, Kreisler, Purdy, Van Noy, Wood, Campbell.
Third Row: Seitzer, Morris, Dunlap, Corbin, Scudder, Pease, Roupp, Gilbert, Howe, Benson, Miles.
Fourth Row: Miss Phifer, Miss Ross, Miss Grigsby.

Membership in the Association for Childhood Education is open to any student enrolled in the Elementary Department. This organization aims to further development of early childhood education in the state, to help create and maintain high standards of early childhood education in the state, and to cooperate with the Pennsylvania Department of Education.

Although this Association was begun in Mansfield only last year, it has already become a member of the national association. This year under the capable direction of our co-sponsors, Dr. G. A. Retan and Miss Mildred Grigsby, the Association has shown remarkable growth and interest.

The officer personnel consisted of Jean Dailey, President; LaRene Thomas, Vice-President; Marie Miller, Secretary; Joyce Schanbacher, Treasurer.

Student Teachers

During their last year at college, seniors teach about two hours a day. This work follows preliminary observation and participation during their junior year. As soon as the student becomes adjusted to the teaching situation, the supervisor allows him to take full responsibility for the room. Now he must translate theoretical knowledge gained in college into practice in dealing with each situation as it arises. Through his own experience and the aid of the supervisor, he will be able upon completing his work to become an efficient member of his profession.



Future Kreisler



One for the RS!



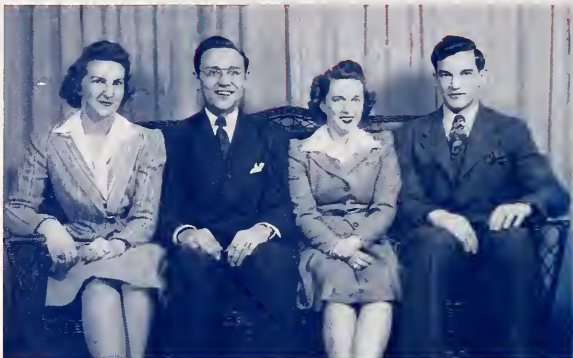




A decorative graphic consisting of a thick red arc with two white stripes, resembling a stylized rainbow or a ribbon. Two red five-pointed stars are positioned above the arc, one on the left and one on the right. The graphic flows from the left side of the page, arching over the text, and then tapers off to the right.

The
CLASSES

CLASS
of
1943



Senior Class Officers

Hamilton, Secretary

Seymour, President

Jones, Treasurer

Jacobsen, Vice President



*Miss Leberman
Senior Class Adviser*

During the past four years you have gathered a store of worthwhile ideas, moral and spiritual inspirations for "thinking and doing".

If your associations with each other and the faculty have been meaningful to you, you must also have acquired a sound philosophy of life, and will thus be more understanding teachers, parents, and companions for the students of tomorrow.

Remember—never become completely satisfied with your achievements; always try to do better. Be upright and honest. If you do these things, your lives should be rich and happy.

JANETT M. LEBERMAN,

As we approach Commencement Day 1943, we look with retrospect upon our four years of college life. For most of us these four years have been happy and profitable ones. However, at this Commencement time there falls upon each and every one of us a strange feeling as we recall to mind those members of our class who have left the guise of students to serve in the armed forces of our country. We are proud of these members and we are reasonably sure that they are proud of us, because we have established an enviable record in the annals of Mansfield State Teachers College.

We are leaving Mansfield now to take our places in a world torn by war. We feel that we have received a well-rounded preparation for the living of the difficult days which lie ahead and that the inevitable victory and peace to follow will find us serving well as teachers or in any other life's work that we choose to follow.

Our stay at Mansfield has been all too short. We shall never forget our Alma Mater and we trust that our Alma Mater will always look with fond memories upon the Class of 1943.



Flicker's behind the hat.



Kch-kch!



Liz



ANNA F. BLAKE

Homemaking

Newfield, Pa.

Accelerated; Omicron Gamma Pi 1, 2, 3, 4; Rurban Club 1, 2; Day Students Club 1, 2, 3, 4.

PHYLLIS S. FREIL

Homemaking

Wilkes-Barre, Pa.

Accelerated; Y.W.C.A. 1, 2, 3; Omicron Gamma Pi 1, 2, 3, 4; Dramatic Club 3, 4; W.A.A. 1, 2.

DORIS L. BOSTOCK

Music

Mansfield, Pa.

Accelerated; Music Educator's Club 1, 2, 3, 4 (Secretary 4); Madrigal Singers 3, 4; Bend 3, 4; Chorus 1, 2; Triple Trio 1, 2, 3, 4; Lambda Mu 3, 4; Kappa Delta Pi 4.

RICHARD C. GRIFFITH

Music

Williamstown, Pa.

Accelerated; Band 1, 2, 3, 4; Orchestra 1, 2, 3, 4; Vested Choir 1; Chorus 1, 2, 3; Opera 1; Madrigals 1, 2, 3, 4; Phi Mu Alpha 2, 3, 4; Music Educator's Club 1, 2, 3, 4 (Vice President 4); Basketball 2, 3; Football 2; Baseball 2.

HELEN SCHLAPPI BOWER

Elementary

Mansfield, Pa.

Accelerated; Day Students Club 1, 2, 3, 4; American Association Childhood Education 3, 4; Dramatic Club 2, 3, 4; Art Club 1, 2, 3, 4; Rurban Club 1; Flashlight Staff 1, 2; Women's Chorus 4.

JOHN HENRY HARTRANFT

Music

Conyngham, Pa.

Accelerated; Band 1, 2, 3, 4; Chorus 1, 2, 3, 4; Music Educator's Club 1, 2, 3, 4; Y.M.C.A. 1, 2, 3, 4 (President 4).



M. JEAN DAILY

Elementary

Genesee, Pa.

Accelerated; American Association Childhood Education 3, 4 (President 4); Y.W.C.A. 1, 2, 3, 4; W.A.A. 1, 2; Secretary of Class 3.

NOREJANE JOHNSTON

Homemaking

Coudersport, Pa.

Accelerated; College Players 2, 3, 4 (President 4); Omicron Gamma Pi 2, 3, 4; Y.W.C.A. 1; Kappa Delta Pi 3, 4; Day Students Club 2, 3.

DORCAS J. EICHELBERGER

Elementary

Eldred, Pa.

Accelerated; Y.W.C.A. 1, 2, 3; Dramatic Club 2, 3, 4; W.A.A. 2; Dormitory Council 3, 4 (President 4); Student Council 4; Methodist Missioners 1, 2, 3, 4; Women's Chorus 4; American Association Childhood Education 4; Who's Who in American Colleges and Universities 4.

WILMA K. KIDNEY

Homemaking

Genesee, Pa.

Accelerated; Omicron Gamma Pi 1, 2, 3, 4; Y.W.C.A. 2, 3, 4; Day Students Club 1, 2, 3, 4.

MARIETTA F. EMMANUEL

Homemaking

Chester, Pa.

Accelerated; Y.W.C.A. 1, 2, 3, 4; Omicron Gamma Pi 1, 2, 3, 4; W.A.A. 1, 2, 3; Kappa Delta Pi 4; Methodist Missioners 1, 2, 3.

ANNA MARY KOOCH

Elementary

Sullivan, Pa.

Accelerated; W.A.A. 1, 2, 3, 4; Elementary Club 3, 4; Rurban Club 4; Y.W.C.A. 1, 2, 3, 4.

DOROTHY A. EVANSHA

Homemaking

Sunbury, Pa.

Accelerated; Omicron Gamma Pi 1, 2, 3, 4; Y.W.C.A. 1, 2, 3, 4; W.A.A. 1, 2, 3, 4; Art Club 2, 3, 4.

SARA E. MANEVAL

Music

Liberty, Pa.

Accelerated; Y.W.C.A. 1, 2, 3, 4 (Cabinet 2, 3, 4); Vested Choir 1, 2, 3; Symphonic Band 1, 2, 4; Symphony Orchestra 3; Chorus 1, 2, 3, 4; Music Educator's Club 1, 2, 3, 4 (Treasurer 4); Triple Trio 3, 4; Drill Band 1, 2, 4.

MARIAN L. FREED

Homemaking

Williamsport, Pa.

Accelerated; Y.W.C.A. 1, 2; W.A.A. 1, 2; Omicron Gamma Pi 1, 2, 3, 4; Kappa Delta Pi 3, 4; Pi Kappa Epsilon 4.

ANNA S. MAYNARD

Homemaking

Wellsboro Pa.

Accelerated; Omicron Gamma Pi 1, 2, 3, 4; Day Students Club 1, 2, 3, 4.





THOMAS E. McGRAW

Secondary

Wilkes-Barre, Pa.

Accelerated; Football 1, 2, 3, 4 (Co-Captain 4); Phi Sigma Pi 2, 3, 4 (President 3, Vice President 4); Caiontawan Board 3, 4 (Editor 4); Sigma Zeta 2, 3; Dramatic Club 2, 3, 4; Student Council 4; Baseball 1, 2; "M" Club 2, 3, 4; Wrestling 1, 2; Intramural Sports 1, 2, 3, 4; U. S. Army Air Corps 4; Who's Who in American Colleges and Universities 4.

WINONA MOON STEWART

Elementary

New Albany, Pa.

Accelerated; American Association Childhood Education 3, 4; Rurban Club 1, 2; Day Students Club 1, 2, 3, 4.

KAY O'REILLY

Elementary

Friendsville, Pa.

Accelerated; W.A.A. 1, 2, 3, 4; Elementary Club 3, 4; Rurban Club 2; Y.W.C.A. 1, 2, 3, 4.

DOROTHY L. STEVENS

Music

Bellefonte, Pa.

Accelerated; College Chorus 1, 2, 3, 4; Music Educator's Club 1, 2, 3, 4; Y.W.C.A. 1, 2; Vested Chir 1; W.A.A. 1, 2.

CHARLES C. STEWART

Music

Forty Fort, Pa.

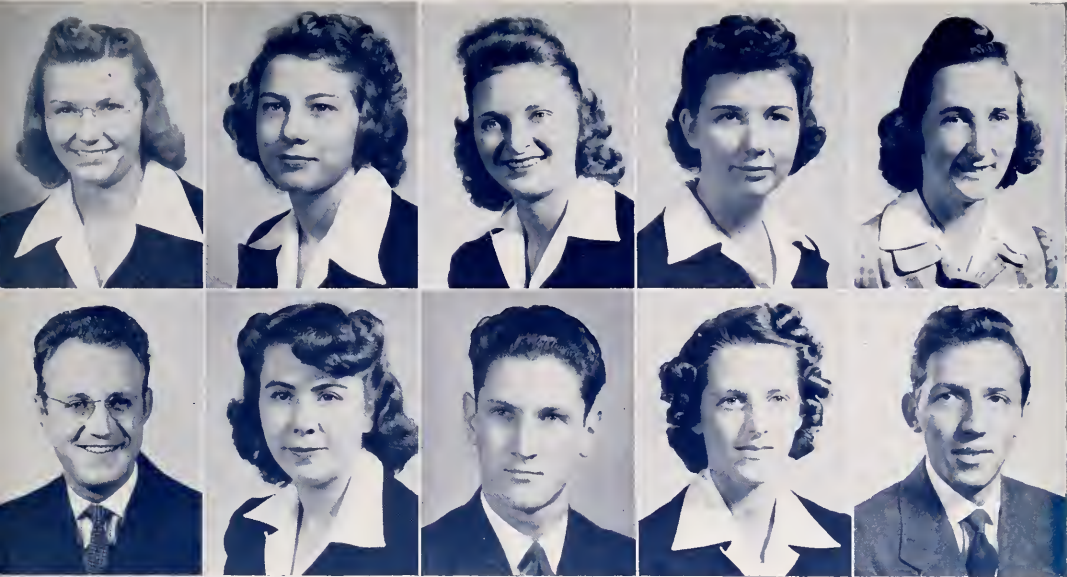
Accelerated; Music Educator's Club 1, 2, 3, 4; Phi Mu Alpha 2, 3, 4; Y.M.C.A. 1, 2; Chorus 1, 2, 3; Vested Choir 2, 3; Madrigal Singers 3, 4; Orchestra 1, 2, 3, 4; Band 2, 3; Day Students Club 2, 3, 4.

FERNE B. TERRY

Homemaking

East Mauch Chunk, Pa.

Accelerated; Omicron Gamma Pi 1, 2, 3, 4; W.A.A. 1, 2, 3 (President 3); Y.W.C.A. 1, 2, 3; Cheer Leader 1, 2, 3, 4.



F. LENORE OWENS

Homemaking

Clearfield, Pa.

Accelerated; Omicron Gamma Pi 1, 2, 3, 4 (President 4); Art Club 1, 2, 3, 4 (Vice President 4); Sigma Zeta 3, 4; Kappa Delta Pi 3, 4; W.A.A. 1, 2, 3; Y.W.C.A. 1, 2, 3; Who's Who in American Colleges and Universities 4.

HELEN ELAINE PARTRICK

Homemaking

Elizabeth, New Jersey

Accelerated; Omicron Gamma Pi 1, 2, 3, 4; W.A.A. 1, 2, 3, 4; Art Club 2, 3, 4; Day Students Club 4.

CONSTANCE H. PIATKOWSKI

Homemaking

Forest City, Pa.

Accelerated; Music Educator's Club 1, 2, 3, 4; Band 2, 3, 4; Y.W.C.A. 1, 2; Chorus 1, 2, 3, 4; Orchestra 3; W.A.A. 1.

EMILY JEAN RIEGEL

Homemaking

Shenandoah, Pa.

Accelerated; Omicron Gamma Pi 1, 2, 3, 4; W.A.A. 1, 2, 3; Y.W.C.A. 1, 2, 3.

AGNES V. RUDNESKI

Secondary

Morris Run, Pa.

Accelerated; Y.W.C.A. 1, 2, Ruban Club 3; W.A.A. 1, 2, 3, 4 (Vice President 3); Day Students Club 1, 2, 3, 4.

ROBERT E. ZWALLY

Music

Ephrata, Pa.

Accelerated; Opera Orchestra 1; Phi Mu Alpha 2, 3, 4; Orchestra 1, 2, 3, 4; Band 1, 2, 3, 4; Drill Band 1, 2, 3, 4; College Players 3, 4 (Vice President 4); Music Educators Club 1, 2, 3, 4; President 4); Esquires 1, 2, 3, 4; Y.M.C.A. 1; Chorus 1, 2, 3, 4.

DEIRDRE E. ADAMS

Homemaking

Crooked Creek, Pa.

Omicron Gamma Pi 1, 2, 3, 4; Y.W.C.A. 2, 3, 4; W.A.A. 1, 2, 3, 4; Rurban Club 2.

ENOCH DELLIVAN BLACKWELL

Secondary

Elkland, Pa.

Flashlight 2, Photograph Editor 3, Editor-in-Chief 4; Photograph Editor Carontawan 3; Kappa Delta Pi 3, 4; Phi Sigma Pi 2, 3, 4; Sigma Zeta 2, 3, 4; "M" Club 3, 4; Tennis 1, 2, 3; Who's Who in American Colleges and Universities 4; Y.M.C.A. 1, 2, 3, 4; Student Council 4; Camera Club 1, 2; Intramural Basketball 1, 2, 3, 4.

THELMA ELIZABETH BOLT

Music

Covington, Pa.

Dramatic Club 3, 4; Flashlight 1, 2, 3, 4; W.A.A. 2; Music Educator's Club 1, 2, 3, 4; Y.W.C.A. 4; Day Students Club 1, 2, 3, 4; Orchestra 1, 2, 3, 4; Band 2, 3, 4; Chorus 1, 2, 3, 4; Drill Band 3, 4.

C. HOWARD BOWMAN JR.

Music

Williamsport, Pa.

Band 3, 4; Orchestra 3, 4; Chorus 3, 4; Drill Band 3, 4; Y.M.C.A. 3, 4; Music Educator's Club 3, 4; U. S. Army Air Corps 4.





LILLIAN E. BRACE

Music

Mansfield, Pa.

Y.W.C.A. 1, 2, 3; Day Students Club 1, 2, 3, 4; Music Educator's Club 1, 2, 3, 4 (Treasurer 4); Band 1, 2, 3, 4; Drill Band 1, 2, 3, 4; Drum Major 4; Orchestra 1, 2, 3, 4; Opera 1; Chorus 1, 2, 3, 4; Vested Choir 1, 2, 3; Lambda Mu 2, 3, 4 (Vice President 3, President 4); Kappa Delta Pi 4.

JANET HELEN BRITTON

Music

Seranton, Pa.

Y.W.C.A. 1, 2; Madrigal Singers 3, 4; Triple Trio 1, 2; Art Club 2, 3; Lambda Mu 3, 4; Vested Choir 1, 2; Methodist Missioners 1, 2, 3; Music Educator's Club 1, 2, 3, 4.

CAROL J. BROTZMAN

Homemaking

New Milford, Pa.

Omicron Gamma Pi 1, 2, 3, 4 (Secretary 2); Art Club 1, 2, 3, 4; W.A.A. 1, 2, 3, 4; Methodist Missioners 2, 3, 4; Y.W.C.A. 1, 2, 4; Student Council 3, 4 (Vice President 3); Dormitory Council 4 (President 4); Who's Who in American Colleges and Universities 4.

JEAN CLARE

Homemaking

Edgewood, Maryland

Omicron Gamma Pi 1, 2, 3, 4 (Vice President 3); Art Club 1, 2, 3, 4; Dramatic Club 1, 2, 3, 4; W.A.A. 1, 2, 3; Y.W.C.A. 1, 2, 3; Sigma Zeta 3, 4; Kappa Delta Pi 3, 4; Pi Kappa Epsilon 3, 4 (President 4); Carontawan Board 3, 4; Who's Who in American Colleges and Universities 4.

DOROTHY COOK

Homemaking

Wyoming, Pa.

Y.W.C.A. 1, 2, 3, 4; W.A.A. 1, 2, 3, 4; Omicron Gamma Pi 1, 2, 3, 4; Dormitory Council 3, 4.

BESSIE IRENE CRISS

Elementary

Millerton, Pa.

Y.W.C.A. 1, 2; Day Students Club 1, 2, 3, 4; W.A.A. 2; American Association of Childhood Education 3, 4.



MADOLON R. BROWN

Homemaking

Midd'ebury Center, Pa.

Y.W.C.A. 1, 2, 3, 4; Day Students Club 1, 2, 3, 4; Omicron Gamma Pi 1, 2, 3, 4.

ROSS E. BRYAN JR.

Secondary

Mansfield, Pa.

Phi Sigma Pi 1, 2, 3, 4 (Vice President 4); Sigma Zeta 2, 3, 4; Kappa Delta Pi 4; Carontawan Board 2, 3, 4 (Assistant Business Manager 2, Business Manager 3, 4); Day Students Club 1, 2, 3, 4; Y.M.C.A. 1, 2, 4; Vested Choir 3; Flashlight Staff 1; Intramural Sports 1, 2, 3, 4.

EDNAMAE BUCKBEE

Music

Tioga, Pa.

Chorus 1, 2, 3, 4; Band 1, 2, 3, 4; Orchestra 1, 2, 3, 4; Drill Band 1, 2, 3, 4; Y.W.C.A. 1, 2, 4; W.A.A. 1; Music Educator's Club 1, 2, 3, 4.

BETTY JANE CAMPBELL

Homemaking

Jersey Shore, Pa.

W.A.A. 1, 2, 3; Y.W.C.A. 1, 2, 3, 4; Omicron Gamma Pi 1, 2, 3, 4; Art Club 1, 2, 3, 4; Intramural Sports 1, 2, 3, 4.

ELOISE O. CHAFFEE

Homemaking

Greenwood, New York

Omicron Gamma Pi 1, 2, 3, 4; Y.W.C.A. 1, 2; W.A.A. 1, 2; Dormitory Council 4.

FRANCES MARVIN DeLAPPA

Elementary

Punxsutawney, Pa.

Methodist Missioners 2, 3; Women's Chorus 3; Rurban Club 3; Association of Childhood Education 3, 4; Art Club 3, 4; Kappa Delta Pi 4.

HELEN LOUISE DUNLAP

Elementary

Muncy, Pa.

Y.W.C.A. 1, 2, 3; S.H.E. Chorus 3; Rurban Club 3; Association of Childhood Education 3, 4.

VIRGINIA ANNE DUNN

Homemaking

Warren, Pa.

Omicron Gamma Pi 1, 2, 3, 4; Y.W.C.A. 1, 2, 3, 4; Methodist Missioners 2, 3.

ANNA MAE DURKIN

Homemaking

Ashland, Pa.

Omicron Gamma Pi 1, 2, 3, 4; W.A.A. 1, 2, 3; Y.W.C.A. 1, 2, 3, 4; Intramural Sports 1, 2, 3, 4.

MARIAN E. EASTMAN

Music

Wrights, Pa.

Band 2, 3, 4; Triple Trio 3, 4; Lambda Mu 3, 4; Y.W.C.A. 1, 2, 3, 4; Vested Choir 3; Music Educator's Club 1, 2, 3, 4.





LOIS MAXINE EAVES

Music

Somerfield, Pa.

Band 2, 3, 4; Drill Band 2, 3, 4; Chorus 2, 3, 4; Music Educator's Club 2, 3, 4; Y.W.C.A. 2, 4; Dramatic Club 3, 4; Orchestra 2, 3, 4.

JANE GRIMSHAW

Music

North East, Pa.

Music Educator's Club 3, 4; Vested Choir 3; Y.W.C.A. 3, 4; W.A.A. 3, 4; Transfer from St. Petersburg, Fla.

JANE ELLIOTT

Elementary

Camptown, Pa.

Student Council 4; Association of Childhood Education 3, 4; W.A.A. 1, 2, 3, 4 (Secretary 2, 3); S.H.E. Chorus 3, 4; Y.W.C.A. 1, 2, 4; Rurban Club 3.

ELIZABETH JEANNE HAMILTON

Elementary

Eldred, Pa.

Association of Childhood Education 3, 4; Y.W.C.A. 1, 2; S.H.E. Chorus 3, 4; Secretary of Class 4.

KAY ETSWEILER

Homemaking

Millersburg, Pa.

Omicron Gamma Pi 1, 2, 3, 4; Y.W.C.A. 1, 2, 4; W.A.A. 1, 2, 3, 4; Dramatic Club 4; Kappa Delta Pi 4; Intramural Basketball 1, 2, 3, 4.

A. ELIZABETH HEYD

Homemaking

Liberty, Pa.

Omicron Gamma Pi 1, 2, 3, 4; Art Club 1, 2, 3, 4; Day Students Club 1, 2, 3, 4; Y.W.C.A. 1, 4; Pi Kappa Epsilon 3, 4 (Secretary 3).



VIRGINIA FLEMING

Music

Eric, Pa.

Chorus 1, 2, 3, 4; Orchestra 2, 3, 4; Lambda Mu 3, 4 (Treasurer 4); Music Educator's Club 1, 2, 3, 4; Y.W.C.A. 1, 2, 3, 4.

DOROTHY JEAN FOLCHMAN

Homemaking

Chester, Pa.

Omicron Gamma Pi 2, 3, 4; Y.W.C.A. 3; W.A.A. 2, 3, 4.

ESTHER CURREN FRENCH

Elementary

Gillett, Pa.

Art Club 1, 2, 3, 4; Methodist Missioners 2, 3 (Treasurer 3); S.H.E. Chorus 3; Rurban Club 3; Association of Childhood Education 3, 4 (Corresponding Secretary 3); Kappa Delta Pi 3, 4 (Recording Secretary 4); Kappa Phi Pledge 4.

CLEO M. FRISBEE

Homemaking

Eldred, Pa.

Omicron Gamma Pi 1, 2, 3, 4; W.A.A. 1, 2; Y.W.C.A. 1, 2, 3.

NORMA J. GREENE

Homemaking

Keeseville, N. Y.

Omicron Gamma Pi 1, 2, 3, 4; W.A.A. 1, 4; Y.W.C.A. 1, 2.

EDITH R. HARDY

Secondary

Clarks Summit, Pa.

Flashlight 1, 2, 3, 4 (Business Manager 4, Secretary 3); French Club 1, 2, 3, 4 (Treasurer 3); W.A.A. 1, 2; Y.W.C.A. 1, 2, 3, 4 (Vice President 3, Assistant Treasurer 4).

RUTH A. HARDY

Homemaking

Port Allegany, Pa.

Kappa Delta Pi 4; Sigma Zeta 3; Y.W.C.A. 1, 2, 3, 4 (Secretary 4); Omicron Gamma Pi 2, 3, 4; Art Club 2, 3, 4.

BASIL HARRIS

Secondary

Galeton, Pa.

Student Council 3, 4 (President 4); Editor of Carontawan 3; Dramatic Club 1, 2, 3, 4 (President 2); Head Waiter 2, 3, 4; Phi Sigma Pi 2, 3, 4 (Historian 2); Kappa Delta Pi 3, 4; Sigma Zeta 2, 3, 4; Art Club 1, 2, 3 (Secretary 2); President of Freshman Class 1; President of Associated Student Governments of S. T. C. 4; Who's Who in American Colleges and Universities 4.

LUELLA O. HEASLEY

Music

Rew, Pa.

Orchestra 2, 3, 4; Band 4; Chorus 1, 2, 3, 4; Vested Chir 1, 3; Lambda Mu 2, 3, 4 (Recording Secretary 4); Y.W.C.A. 1, 2, 3, 4 (Cabinet 2, 3, 4); Music Educators Club 1, 2, 3, 4; W.A.A. 1, 2; Classical Club 2, 3.

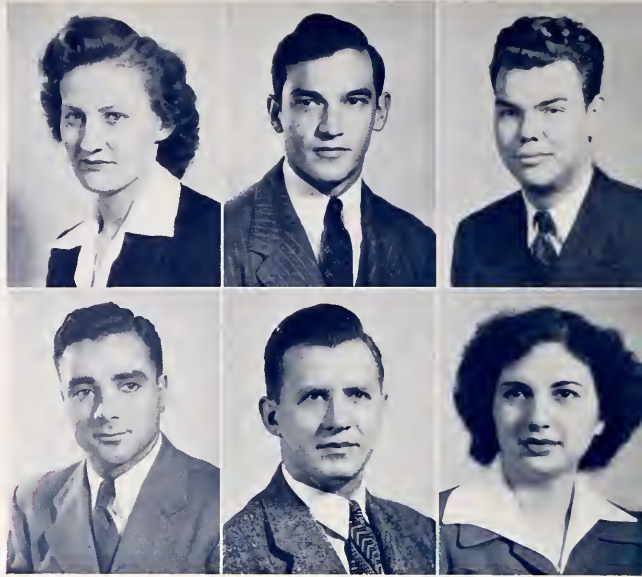
LOIS C. HELMAN

Homemaking

East Mauch Chunk, Pa.

Y.W.C.A. 1; Art Club 1, 2, 3, 4; Omicron Gamma Pi 1, 2, 3, 4; Kappa Delta Pi 4; Pi Kappa Epsilon 3, 4 (Vice President 4); W.A.A. 1, 2, 3; Lutheran Student Group 3, 4 (President 4).





CHARLOTTE HUFF

Elementary

Association of Childhood Education 3, 4; S.H.E. Chorus 3, 4; Treasurer of Class 3; Y.W.C.A. 1, 2, 3.

Eldred, Pa.

JAMES A. LIPARULO

Secondary

Football 1, 2, 3, 4 (Co-Captain 4); Men's Dormitory Council 4 (President 4); "M" Club 2, 3, 4 (Vice President 4); Student Council 4; Baseball 1, 2; Wrestling 1, 2; Y.M.C.A. 1, 2, 3; Intramural Sports 1, 2, 3, 4; U. S. Army 4.

Olyphant, Pa.

MORRIS JACOBSON

Secondary

Basketball 1, 2, 3 (Co-Captain 3); Football 1, 2, 3, 4; "M" Club 1, 2, 3, 4 (Secretary 2, 3, President 4); Sigma Zeta 2, 3, 4 (Treasurer 4); Phi Sigma Pi 2, 3, 4 (Treasurer 3); Vice President of Class 2, 4.

Westfield, Pa.

ROY NORMAN LOFGREN

Music

Band 1, 2, 3, 4; Orchestra 1, 2, 3; Chorus 1, 2, 3, 4; Y.M.C.A. 1, 2, 3; Phi Mu Alpha 4; Music Educator's Club 1, 2, 3, 4.

Wellsboro, Pa.

PAUL EDWIN JAYNES

Secondary

Day Students Club 3, 4; Student Minister 3, 4.

Mainesburg, Pa.

ALDA R. MANINO

Secondary

Y.W.C.A. 1, 2; W.A.A. 1, 2; Day Students Club 1, 2, 3; French Club 2, 3; Classical Club 1, 2; Kappa Delta Pi 4.

Wellsboro, Pa.



DOROTHY JEAN JOHNSON

Music
 Kane, Pa.
 Y.W.C.A. 1, 2; Band 1, 2, 3, 4; Chorus 1, 2, 3, 4;
 Vested Choir 3; Triple Trio 4; Music Educator's
 Club 1, 2, 3, 4; Drill Band 1, 2, 3, 4.

BETTY JANE MARRER

Homemaking
 Brackney, Pa.
 Omicron Gamma Pi 1, 2, 3, 4; Dramatic Club 4;
 Sigma Zeta 2, 3, 4.

MARGARET ANN JONES

Homemaking
 Stroudsburg, Pa.
 Omicron Gamma Pi 2, 3, 4; W.A.A. 4; Treasurer
 of Class 4.

JOHN T. McCARTAN

Secondary
 Wilkes-Barre, Pa.
 Day Students Club 1, 2, 3, 4; Y.M.C.A. 1, 2; Bas-
 ketball 2, 3; Baseball 2; Intramural Sports 1, 2, 3,
 4; U. S. Army Air Corps 4.

MARIAN J. JUPENLAZ

Elementary
 Mansfield, Pa.
 S.H.E. Chorus 4; Association of Childhood Edu-
 cation 3, 4; Day Students Club 1, 2, 3, 4; Y.W.C.A.
 1, 2, 3, 4; Rurban Club 2, 3.

TERESA M. McDONALD

Music
 Union, N. Y.
 Triple Trio 1, 2, 3, 4; W.A.A. 1, 2; Music Edu-
 cator's Club 1, 2, 3, 4; Chorus 1, 2, 3, 4; Vested
 Choir 1, 2, 3.

CLARENCE E. KEMP JR.

Music
 Shinglehouse, Pa.
 Band 1, 2, 3, 4; Orchestra 3, 4; Phi Mu Alpha 3,
 4 (Off. 4); Vice President of Class 3; Student
 Council 4; Music Educator's Club 1, 2, 3, 4; Opera
 1; Vested Choir 1, 2, 3; Y.M.C.A. 1, 2, 4; Drill
 Band 1, 2, 3, 4.

ELIZABETH A. NEEKER

Music
 Scranton, Pa.
 Trip'e Trio 1, 2, 3, 4; Vested Choir 2, 3; Music
 Educator's Club 1, 2, 3, 4; Band 2, 3, 4; Dramatic
 Club 2, 3, 4; Methodist Missioners 2, 3; Y.W.C.A.
 1, 2; W.A.A. 1.

MARY JANE KITAIFF

Homemaking
 Douglastown, N. Y.
 Art Club 2, 3; Sigma Zeta 2, 3, 4 (Vice Presi-
 dent 3); Omicron Gamma Pi 1, 2, 3, 4; Dramatic
 Club 2, 3, 4; W.A.A. 1; Y.W.C.A. 1, 2, 3.

PEARLE MARIE MILLER

Elementary
 Williamsport, Pa.
 Y.W.C.A. 1, 2, 3, 4; Kappa Delta Pi 3, 4; Associ-
 ation of Childhood Education 3, 4 (Secretary 3, 4);
 W.A.A. 1, 2; Day Students Club 1, 2; S.H.E. Cho-
 rus 3, 4; Rurban Club 3.





MARY ELIZABETH MORRIS

Elementary

Troy, Pa.

S.H.E. Chorus 3, 4; Y.W.C.A. 1, 2; Rurban Club 3; Association of Childhood Education 3, 4.

ELAINE K. REDFIELD

Secondary

Elkland, Pa.

Student Council 3, 4; Kappa Delta Pi 4; Y.W.C.A. 1, 2, 3, 4; W.A.A. 1, 2; Flashlight 4.

SARA ELIZABETH ORNDORFF

Homemaking

Littlestown, Pa.

Y.W.C.A. 1, 2; Omicron Gamma Pi 1, 2, 3, 4; Kappa Delta Pi 3, 4 (Vice President 4); W.A.A. 1, 2.

FRANCIS C. ROUPP

Secondary

Liberty, Pa.

Phi Sigma Pi 4; Y.M.C.A. 3, 4; Day Students Club 3; Intramural Sports 3, 4; U. S. Army Air Corps 4.

PHYLLIS E. PALMER

Secondary

New Albany, Pa.

Classical Club 1, 2, 3; French Club 1, 2, 3, 4 (President 4); Kappa Delta Pi 3, 4 (Corresponding Secretary 4); W.A.A. 1, 2, 3; Day Students Club 1, 2, 3, 4; Y.W.C.A. 1, 2; Intramural Basketball 1, 2, 3, 4.

IRENE M. RUMSEY

Elementary

Millerton, Pa.

Day Students Club 1, 2, 3, 4; W.A.A. 1, 2; Y.W.C.A. 1, 2; Rurban Club 3; Kappa Delta Pi 3, 4; Association of Childhood Education 3, 4.



DORIS CHRISTINE PARTCHEY

Elementary
Kappa Delta Pi 4; Y.W.C.A. 3, 4; S.H.E. Chorus
4 (President 4); Association of Childhood Educa-
tion 3, 4; Day Students Club 1, 2, 3; W.A.A. 2, 3;
Orchestra 2, 3, 4.

Lewistown, Pa.

FRANCES SCHERMERHORN

Music
Music Educator's Club 1, 2, 3, 4; Chorus 1, 2, 3,
4; Triple Trio 1, 2, 3, 4; Dramatic Club 3, 4; Madri-
gal Singers 4.

Troy, Pa.

SARA EVANS PAYNE

Homemaking
Omicron Gamma Pi 1, 2, 3, 4; W.A.A. 1, 2, 3;
Y.W.C.A. 1, 2, 3.

Loysville, Pa.

RICHARD LESTER SEIFERT

Music
Music Educator's Club 1, 2, 3, 4; Phi Mu Alpha
3, 4 Symhonic Band 1, 2, 3, 4; Orchestra 1, 2, 3,
4; Drill Band 1, 2, 3, 4; Chorus 1, 2, 3, 4; Y.M.C.A.
1, 2, 3, 4; Vested Choir 2, 3; U. S. Army 4.

Greensburg, Pa.

MARY ANNE PORETTA

Music
Band 2, 3, 4; Chorus 1, 2, 3, 4; Music Educator's
Club 1, 2, 3, 4; Y.W.C.A. 1, 2, 3, 4; Y.W.C.A. 1, 2,
3, 4; W.A.A. 3; Triple Trio 2, 3, 4.

Silver Creek, Pa.

DOROTHY JEAN SEIPP

Secondary
Art Club 2, 3, 4 (President 4, Treasurer 3); Ca-
rontawan Board 3, 4; Kappa Delta Pi 3, 4; W.A.A.
1, 2; Y.W.C.A. 1, 2, 3, 4.

Damascus, Pa.

LOIS K. PORT

Music
Orchestra 1, 2, 3, 4; Chorus 1, 2, 3, 4; Triple Trio
3, 4; Music Educator's Club 1, 2, 3, 4; Lambda Mu
2, 3, 4 (Vice President 4); Y.W.C.A. 4.

Kane, Pa.

MARGARET ELIZABETH SEITZER

Elementary
Y.W.C.A. 1, 2; Classical Club 1; Rurban Club 3;
Association of Childhood Education 3, 4.

Williamsport, Pa.





C. ARTHUR SEYMOUR

Secondary

Jermyn, Pa.

President of Senior Class 4; President of Junior Class 3; President of Sophomore Class 2; Student Council 3, 4; Phi Sigma Pi 1, 2, 3, 4; Kappa Delta Pi 3, 4; Sigma Zeta 2, 3; Dramatic Club 1, 2, 3, 4; Carontawan Staff 2, 3, 4 (Senior Editor 4); Y.M.C.A. 1, 2, 3; Athletic Manager 1, 2, 3; Intramural Sports 2, 3; Who's Who Among Students in American Colleges and Universities 4.

BETTY ALICE SHOOP

Music

Richland, Pa.

Orchestra 1, 2, 3, 4, (Concertmaster 4); Band 3, 4; Music Educator's Club 1, 2, 3, 4; Lambda MU 2, 3, 4; (Rec. Sec'y 4); Kappa Delta Pi 3, 4; W.A.A. 1; Y.W.C.A. 1, 2, 3, 4, (Cabinet 2, 3, 4, President 4); Chorus 1, 2, 3, 4; Vested Chair 1, 2, 3; Carontawan Board 4; Triple Trio 2, 3, 4; Opera Orchestra 1.

ALTHEA M. SMITH

Homemaking

Alderson, Pa.

Omicron Gamma Pi 1, 2, 3, 4; W.A.A. 1, 2, 3, 4; Y.W.C.A. 1, 2.

LEWIS GEORGE VAN GORDER

Secondary

Wellsboro, Pa.

Baseball 1, 2; Basketball 3; Phi Sigma Pi 2, 3, 4, (Historian 4); Sigma Zeta 2, 3, 4, (Master Scientist 4); Dormitory Council 4 (Vice President 4); Carontawan 3, (Assistant Business Manager 3); M Club 3, 4; Day Student Club 1, 2; Football 4; U. S. Army Corps 4.

VIOLET VARCOE

Secondary

Waymart, Pa.

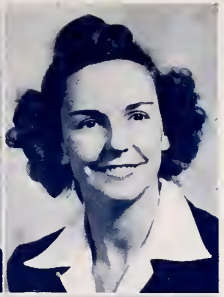
Flashlight 2, 3, 4; Kappa Delta Pi 3, 4, (Treasurer 4); Rurban Club 2, 3, (Secretary 3); Sigma Zeta 3, 4, (Secretary 4); W.A.A. 1, 2, 3, 4; Y.W.C.A. 1, 2, 3, 4.

MARIE M. WEISSENFLUH

Homemaking

Warren, Pa.

Art Club 1, 2, 3, 4; Dramatic Club 4; Dormitory Council 3; Kappa Delta Pi 3, 4, (President 4); Omicron Gamma Pi 1, 2, 3, 4; W.A.A. 1, 2, 3, 4; Y.W.C.A. 1, 2, 4; Who's Who in American Colleges and Universities 4.



JEAN ELIZABETH SOUTHWOOD

Homemaking Mount Carmel, Pa.
Omicron Gamma Pi 1, 2, 3, 4; W.A.A. 1, 4;
Y.W.C.A. 1, 2.

ELWOOD OTIS WELLS

Music Scranton, Pa.
Orchestra 2, 3, 4; Chorus 2, 3, 4; Music Educa-
tors Club 1, 2, 3, 4; Phi Mu Alpha, (Secretary) 4).

RUTH STEBBINS

Homemaking Wellsboro, Pa.
Day Students Club 1, 2, 3, 4, (President 4); Omi-
cron Gamma Pi 1, 2, 3, 4; Student Council 4.

RUTH WHITNEY

Elementary Tioga, Pa.
Day Student Club 1, 2, 3, 4, (Vice President 4);
Arst Club 1, 2, 3, 4; Kappa Delta Pi 3, 4; Associa-
tion of Child Education 3, 4; W.A.A. 1, 2; Y.W.C.A.
1, 2.

JANET L. SULTZER

Music Taylor, Pa.
W.A.A. 1, 2, 3; Y.W.C.A. 1, 2, 3; Band 1, 2, 4;
Drill Band 4; Orchestra 3; Vested Choir 1, 2, 3;
Music Educator's Club 1, 2, 3, 4; Chorus 1, 2, 3, 4.

RUTH E. ZUNDEL

Elementary Galeton, Pa.
W.A.A. 3, 4; Rurban Club 3, Classical Club 3;
Art Club 3, 4.



CLASS
of
1944



Junior Class Officers

- Dorney*
Vice President
- Heller*
Treasurer
- Dildine*
Secretary
- Rodsky*
President



Dr. Swan
Junior Class Adviser

This message to the class of 1944 is directed to those who have left the college halls at our country's urgent call as well as those who remain to serve in a less conspicuous though in no less vital capacity.

In times of uncertainty and stress, I have found comfort in the words of Emerson: "—the escape from all false ties; courage to be what we are, and love of what is simple and beautiful; independence and cheerful relation these are the essentials,—these and the wish to serve, to add somewhat to the well-being of men."

Concerning life's difficulties he says: "Passions, resistance, danger, are educators. We acquire the strength we have overcome."

My wish for you, wherever you may be, is this—may you be courageous and strong.

Sincerely,
ELIZABETH MARSHALL SWAN.

Three years have passed since that eventful day in September 1940, when we first met on the campus of Mansfield State Teachers College. Eager, ambitious, and talented individuals began the training and preparation that would eventually mold capable and enthusiastic teachers. We have gone far since that day and have already been recognized in many fields of endeavor on our college campus.

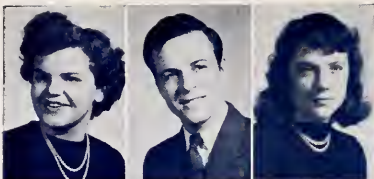
It is not without regret that we anticipate the close of school although we are looking forward to the freedom and idleness of vacation days; for in September when we return several members of our class will not be with us. They will have attained their goal, graduation, in August. We share with them the fond memory of many happy days, and wish them utmost success in their chosen fields of work.

There will be many members of our class entering the service during the next few months. To them and to those who have already left for the service of our country we pledge ourselves to carry on the work they have already started. They will be in our thoughts always, and we're proud of them!

We have worked together, maintaining high ideals and high standards. Our college career is drawing to a close; our educational building, in the process of construction, is nearing completion. One year remains for us to produce the finished product.



Some pretty scenes in and about Mansfield.



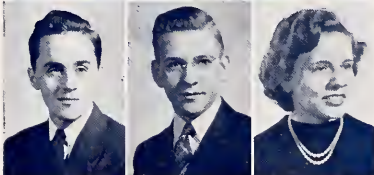
MERCEDES E. ATEN—Elementary—Towanda, Pa.
 DONALD LEIGH AYRES—Secondary—Canton, Pa.
 BETTY E. BAKER—Secondary—Tunkhannock, Pa.



VERA A. BARRETT—Elementary—Snedekerville, Pa.
 ELOISE BEARDSLEE—Homemaking—Starrucca, Pa.
 DWIGHT H. BERG—Secondary—Montrose, Pa.



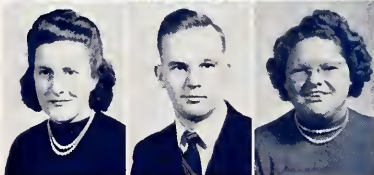
IRENE BOTTIGER—Homemaking—Mt. Pleasant Mills, Pa.
 RICHARD V. BRAISTED—Secondary—Mansfield, Pa.
 ARLENE E. BRIGHTHILL—Homemaking—Myers-
 town, Pa.



RONALD E. BROOKS—Music—Union City, Pa.
 BERNARD L. BRYAN—Music—Sherburne, N. Y.
 DOROTHY JEAN BUMP—Elementary—Tioga, Pa.



JEANETTE A. BURTON—Elementary—Susquehanna, Pa.
 JOHN CAMPANA—Secondary—Williamsport, Pa.
 MICHAEL U. C A S A L E—Secondary—Williams-
 port, Pa.



JOAN ELIZABETH CAWLEY—Elementary—Eldred, Pa.
 ROBERT E. CEDER—Secondary—Arnot, Pa.
 DORIS JEAN CLAIR—Secondary—Montoursville,
 Pa.



BARBARA W. CLENDENEN—Music—Derrick City, Pa.
 ANNA E. COLE—Elementary—Mansfield, Pa.
 TERESA COPPERSMITH—Music—Emporium, Pa.



VIRGINIA M. CROSSLEY—Homemaking—Mansfield, Pa.
 MARIAN M. CUMMINGS—Elementary—Mansfield,
 Pa.
 LOIS DIEFFENBACHER—Homemaking—Bloom-
 burg, Pa.

ELEANOR DILDINE—Music—Benton, Pa.

DOROTHY DOLL—Homemaking—Tunkhannock, Pa.

RICHARD DORNEY—Music—Hazelhurst, Pa.



BEATRICE E. DUNBAR—Homemaking—Troy, Pa.

BETTY MARIE EBINGER—Homemaking—Weatherly, Pa.

JEANNE E. FARRAR—Elementary—Petersburg, Pa.



BARBARA ANNA FERSTER—Homemaking—McAllisterville, Pa.

CATHERINE T. FIVES—Homemaking—Dunmore, Pa.

BETTY JUNE FREDERIC—Homemaking—Carlisle, Pa.



GRACE IRENE GROVE—Homemaking—Mt. Vernon, Pa.

JOYCE HARRINGTON—Elementary—Mansfield, Pa.

ALICE M. HART—Homemaking—Forksville, Pa.



VIRGINIA E. HAYNES—Elementary—Susquehanna, Pa.

LOIS PAULINE HELLER—Music—Avis, Pa.

EDWARD N. HENRY—Music—Lock Haven, Pa.



LAURA ROBERTA HESS—Homemaking—Williamsport, Pa.

MURIEL V. HESS—Homemaking—Mansfield, Pa.

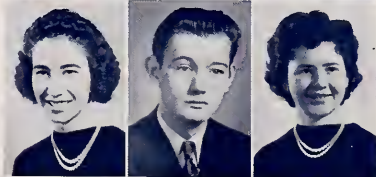
ELEANOR HOFFMAN—Homemaking—New Albany, Pa.



FRANCES ARLENE HOFFMAN—Homemaking—Northumberland, Pa.

DANIEL HOOLEY—Music—Renovo, Pa.

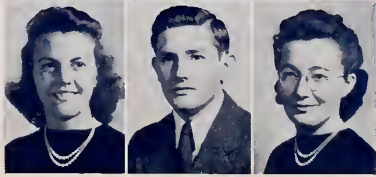
LUCY ADA HOWARD—Homemaking—Wyalusing, Pa.



MABEL L. JAQUISH—Elementary—Covington, Pa.

DONALD A. JOHNSON—Secondary—Scranton, Pa.

TECLA EUGENIA KINGSLEY—Music—Mansfield, Pa.





KENNETH LEE—Secondary—Blossburg, Pa.

JACK M. LONG—Music—Portage, Pa.

ROBERT S. MAGALSKI—Secondary—Larksville.



MARJORIE J. MAHOOD—Homemaking—Troy, Pa.

ANNE S. MARTIN—Secondary—Mansfield, Pa.

JEANNE L. McHENRY—Homemaking—Benton,
Pa.



JUNE MERTZ—Homemaking—Northumberland, Pa.

SARAH FAE METZGER—Homemaking—Williamsport,
Pa.

MARY J. MEYER—Secondary—Blossburg, Pa.



CATHERINE ALBERTA MILES—Elementary—Elkland,
Pa.

ROBERT EDWIN MINERD—Music—Smethport, Pa.

JANE C. MOORE—Homemaking—Forty Fort, Pa.



MARY ELIZABETH MORELY—Homemaking—Gold, Pa.

JOHN MORRIS—Music—Wilkes-Barre, Pa.

JOAN LOUISE MORRISON—Homemaking—
Smethport, Pa.



MARGARET ELIZABETH MUTH—Homemaking—Avon,
Pa.

ETHEL LOUISE NICHOLAS—Secondary—Mansfield,
Pa.

SHERRY CRYSTAL PEARD—Music—Williams-
port, Pa.



ROBERT PIEROTTI—Secondary—Mansfield, Pa.

RUTH A. PINNOCK—Music—Le Raysville, Pa.

BEATRICE MURIEL PLASTOW—Homemaking—
Benton, Pa.



JANET G. PREISLER—Homemaking—Columbia, Pa.

GLORIA B. RAUCH—Homemaking—Slatington, Pa.

MARY L. RICHMOND—Elementary—Mainesburg,
Pa.

LEONARD B. RODSKY—Secondary—Plymouth, Pa.
 NANCY N. ROSS—Homemaking—Fullerton, Pa.
 MARIA ELIZABETH ROY—Elementary—Gillett,
 Pa.



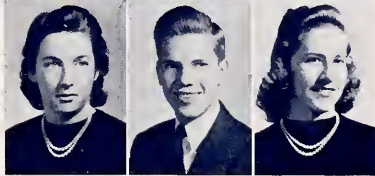
ALICE STELLA RYBICKI—Elementary—Noxen, Pa.
 MARY LOUISE SAXTON—Homemaking—Troy Pa.
 JOYCE A. SCHANBACHER—Elementary—Mans-
 field, Pa.



Z. MARGARET SHELLHAMER—Homemaking—Berwick,
 Pa.
 LOIS VIRGINIA SHENNEN—Homemaking—Peck-
 ville, Pa.
 FLORENCE CATHERINE SINGLEY—Homemak-
 ing—Shumans, Pa.



ELEANOR K. SMITH—Homemaking—Hatfield, Pa.
 JACK SNYDER—Secondary—Wyalusing, Pa.
 LESALEE JEANNE SNYDER—Homemaking—Du-
 shore, Pa.



BETTY VIRGINIA STROUBLE—Homemaking—Trout
 Run, Pa.
 MARY JO STUART—Music—Mansfield, Pa.
 THEODORE C. SWANSON—Music—Corry, Pa.



LaRENE THOMAS—Elementary—Canton, Pa.
 JEAN R. TRIVELPIECE—Homemaking—Danville, Pa.
 BEATRICE VAN WIE—Elementary—Keating
 Summit, Pa.



A. JEANNETTE WEHR—Homemaking—Dalton, Pa.
 MARY A. WEST—Elementary—Mansfield, Pa.
 GLADYS WHITMIRE—Homemaking—Renovo, Pa.



JEANNETTE ROSE WILSON—Secondary—Mansfield, Pa.
 STUART P. WINGATE—Music—Wellsboro, Pa.



People whose pictures are not in the book:
 ELEANOR J. BRYAN—Music—Mansfield, Pa.
 THOMAS FOSTER—Music—Wilkes-Barre, Pa.
 GENEVIEVE COX SHAW—Elementary—Mans-
 field, Pa.

CLASS
of
1945



Sophomore Class Officers
Reedy
Vice President
Stowe
President
Elsbree
Secretary
Webster
Treasurer



Miss Murphey
Sophomore Class Adviser

At no period in the past history of the members of the Sophomore Class did the pattern of life keep changing so rapidly as in these stirring times. With our going into the world conflict have come the inevitable readjustments. Some of these are painful and confused; others stand out as clear-cut and decisive. Whatever their ultimate fate, these troublous urgencies are our present heritage and with and through them we who have not been called into the armed forces feel the responsibility and are determined to carry on the activities of the Class of 1945.

S. MARJORIE MURPHEY.

It seems that the class of 1945 must have been born under an unlucky star. Last year we were late entering, due to the infantile paralysis epidemic. This year our class has been reduced in number by having our boys enter the armed forces.

The accelerated program has promoted some of our classmates so that they will graduate one year before the original date. We were generous enough to give the seniors our dance date so that they could sponsor the Senior Ball before Mid-Year graduation. Result—no Soph Hop this year! Well, even with all these adversities we are still a class worthy of the name "Sophomore". We have shown we can take it. The members of the Sophomore class have been very active in sports, dramatics, and campus organizations. We are known as those always willing to help.

To our classmates of '45 in the service we dedicate the following pictures and hope they may bring back some fond memories.

BEST OF LUCK, '45'ers.



Front campus.



Where's the car?



How about that!



RUSSELL C. ANDERSON—Music—Kane, Pa.
 JUNE E. ARMSTRONG—Homemaking—Taylor, Pa.
 E. JEAN AUTEN—Homemaking—Danville, Pa.



LEONARD M. BAILEY—Secondary—Mansfield, Pa.
 DORIS BENSON—Elementary—Susquehanna, Pa.
 BARBARA A. PETZ—Elementary—Venus, Pa.



WILLIAM H. BOWER—Secondary—Blosburg, Pa.
 JEAN BUCK HOWE—Secondary—Ulysses, Pa.
 CHARLOTTE ROBERTA CAMPBELL—Elementary—Erie, Pa.



VIRGINIA CASEY—Elementary—Susquehanna, Pa.
 FRANCIS J. CICHOCKI—Secondary—Plains, Pa.
 GILBERT L. CLARK—Music—Scranton, Pa.



MARGARET A. CLARK—Music—Knoxville, Pa.
 MARJORIE M. COLE—Homemaking—Meshoppen, Pa.
 MARATHA JEAN CONNOR—Homemaking—Orangeville, Pa.



O. WARREN CONNER—Music—West Monterey, Pa.
 HELEN BETTY COON—Homemaking—Clarks Summit, Pa.
 GORDON J. CROOKS—Music—Antrim, Pa.



EDNA DAY—Secondary—Wellsboro, Pa.
 MARY ELLEN DECKER—Music—Easton, Pa.
 SARAH DOCK—Homemaking—Lewisburg, Pa.
 N. ARLENE DORSETT—Secondary—Mansfield, Pa.

MAUDE M. DRUMM—Homemaking—Sunbury, Pa.
 D. HELEN DWYER—Secondary—Morris Run, Pa.
 JOHN A. DWYER—Secondary—Morris Run, Pa.



PRISCILLA ANN EGIZIE—Homemaking—Berwick, Pa.
 HILDA ELSBREE—Music—East Smithfield, Pa.
 BOB FINN—Secondary—Towanda, Pa.



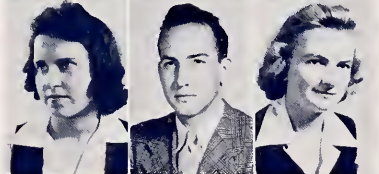
JOHN S. FLEMING—Music—Connellsville, Pa.
 REGINA LEE FOUGHT—Homemaking—Hughesville,
 Pa.
 VIRGINIA A. GALLO—Music—Pittsburgh, Pa.



BETTY GILBERT—Elementary—Wyoming, Pa.
 M. ELEANOR GILBERT—Homemaking—Montours-
 ville, Pa.
 CONSTANCE GREENING—Secondary—Mansfield,
 Pa.



MADELINE GREGO—Homemaking—Hop Bottom, Pa.
 EDWARD HAYDEN—Secondary—Mansfield, Pa.
 G. LOUISE HEGE—Music—Dover, Pa.

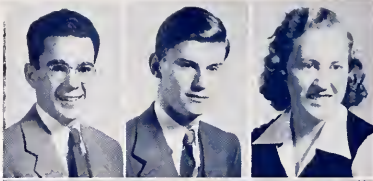


PHYLLIS C. HEINRICH—Secondary—Mansfield, Pa.
 LOIS MARJORIE HENNING—Homemaking—Trucks-
 ville, Pa.
 BETTY J. HERROLD—Homemaking—Selinsgrove,
 Pa.



HARRIETT A. HETRICK—Music—Mansfield, Pa.
 BOB HOLLAND—Secondary—Mansfield, Pa.
 JOYCE K. HOLLENBACH—Secondary—Schuylkill
 Haven, Pa.
 SEYMOUR HOLZER—Secondary—Philadelphia,
 Pa.





RICHARD JOHNSON—Music—Ridge wood, N. J.

ROBERT A. KARLEN—Music—Erie, Pa.

MARY E. KENNEDY—Homemaking—Pleasant Mount, Pa.



ROSELLA M. KREGER—Homemaking—Morris, Pa.

DORIS JANE KREISLER—Elementary—Elkland, Pa.

JOHN L. LALLEY—Secondary—Tioga, Pa.



YVONNE LANE—Secondary—Towanda, Pa.

LENORE LAUDENSLAGER—Homemaking—Valley View, Pa.

ELIZABETH LEONARD—Homemaking—Philadelphia, Pa.



HELEN L. MACK—Homemaking—Sunbury, Pa.

GLENNA MILLER—Homemaking—Nescopek, Pa.

LOUETTA MOSCH—Homemaking—Galeton, Pa.



JANE E. MURDOCK—Music—Knoxville, Pa.

BLANCHE L. PEASE—Elementary—Susquehanna, Pa.

ALICE E. PURDY—Elementary—Dalton, Pa.



JANE McCARTNEY RATHBUN—Music—Wyalusing, Pa.

WILLIS REDNER—Secondary—Tioga, Pa.

ISABELLE REEDY—Homemaking—Sheridan, Pa.



DONNA REESE—Secondary—Austin, Pa.

BOB RICE—Music—Mansfield, Pa.

LOUISE B. RICHARDSON—Homemaking—Harrisburg, Pa.

BERNICE L. ROUPP—Elementary—Liberty, Pa.

MARY ELIZABETH SHIELDS—Music—Nicholson, Pa.
 PHYLLIS LORRAINE SLAIR—Music—Brownstone,
 Pa.
 JOHN A. SMITH—Secondary—Mansfield, Pa.



BETTY V. SNELL—Music—Dushore, Pa.
 JANICE SNELL—Secondary—Towanda, Pa.
 CHRISTINE STEVER—Elementary—Palmerton,
 Pa.



ROBERT LLOYD STOWE—Music—Corry, Pa.
 IDA ANNE STUMP—Homemaking—Taylor, Pa.
 NICK SUMMA—Music—Dunbar, Pa.



ANNE B. SWEIGART—Homemaking—Willow Street, Pa.
 LEONA TAYLOR—Elementary—Rummerfield, Pa.
 M. CHRISTINE THIEMANN—Homemaking—
 Mansfield, Pa.



JUNE A. TOBIAS—Homemaking—South Williamsport, Pa.
 PHYLLIS E. UTT—Homemaking—Orangeville, Pa.
 MARION J. VAN DUSEN—Homemaking—Osceola,
 Pa.



ANNA MARY VAN HORN—Elementary—Granville Sum-
 mit, Pa.
 JANET VAN NOY—Elementary—Granville Summit,
 Pa.
 DOROTHY VAN TUYLE—Homemaking—Pittston,
 Pa.



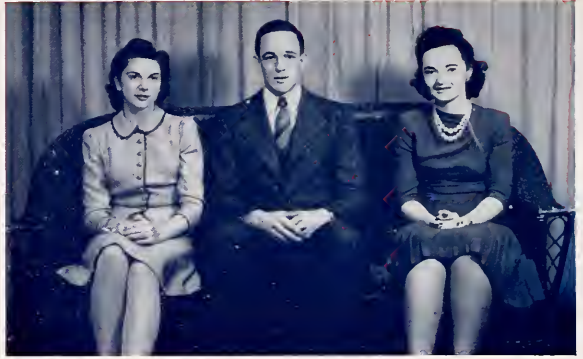
JEAN VOLZ—Homemaking—Taylor, Pa.
 DEWEY WEBSTER—Secondary—Mansfield, Pa.
 LEE WERTZ—Music—Tyrone, Pa.



WILLIAM WINGERT—Secondary—Wisconsinco, Pa.
 NAOMA RUTH WOOD—Elementary—Knoxville, Pa.



CLASS
of
1946



Freshman Class Officers
Scudder
Vice President
Baynes
President
McClintock
Secretary

As you reach the end of your Freshman year, it is a critical time to decide upon your future plans. It is necessary that each one of you prepare yourself to contribute to the war effort either in a civilian or military capacity. As teachers you can make a valuable contribution. Therefore, if possible, complete your college course ably.

We hope that this year has been a meaningful experience for you and through it you have increased your

knowledge, have learned to think more clearly, and will be more useful citizens. Some members of the class have already entered the armed forces. To them and to those who will enter may we extend our sincere good wishes.

Being your advisers this year has been a pleasure, and we wish for you a worthwhile future.

DOROTHY M. WASLEY
PAUL J. STEELE



Miss Wasley, Dr. Steele, Freshman Class Advisers

Of what importance is education in a nation at war? That is the question confronting us all in this year of 1943. Our presence here indicates our answer.

In a war of these dimensions there must be a service for each of us to render. We want to find and perform ours. If the armed services call, we willingly respond. If our service is to educate ourselves and the next generation, we dedicate ourselves to that end. Whichever—"a smile" will be our watchword; determination and faith will carry us through.



Johnny got his gun.



As seen from the Arcade.



It's Corbin!

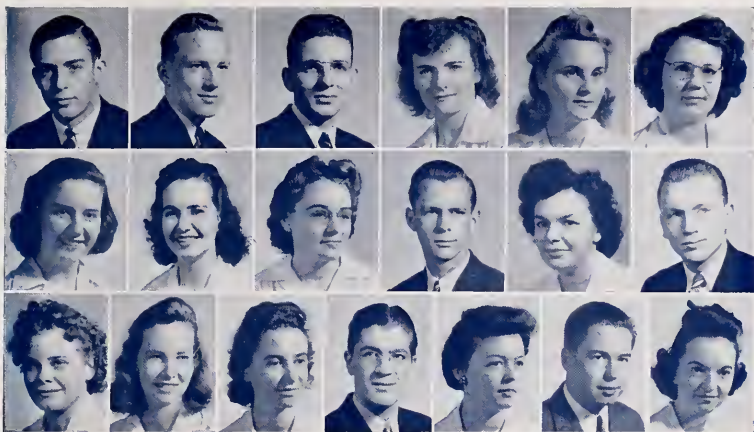


ELAINE MALE AUSTIN—Home Economics—Washington Crossing, Pa. JAMES B. BAKER—Secondary—Lawrenceville, Pa. RICHARD C. BAYNES—Secondary—Mansfield, Pa. SYLVIA L. BECK—Secondary—Jermyn, Pa. BEATRICE BETZ—Home Economics—Venus, Pa. WILLIAM C. BRADSHAW—Secondary—Mansfield, Pa.

M. HELEN BUCKINGHAM—Home Economics—Scenery Hill, Pa. BETTY V. BUTLER—Home Economics—Wellsboro, Pa. HARRY B. CHEESMAN—Secondary—Westfield, Pa. GEORGIA ANNA COLWELL—Secondary—Susquehanna, Pa. MAXINE E. CORBIN—Elementary—Rome, Pa. LEWIS J. CRIPPEN—Secondary—Gaines, Pa.

SAMUEL EUGENE CRISS—Secondary—Millerton, Pa. DORIS E. DECKER—Elementary—Sayre, Pa. ELIZABETH DOUGHTON—Music—Mansfield Pa. WILLIAM E. DOYLE, Jr.—Secondary—Wellsboro, Pa. ANNA MARY DRUMM—Home Economics—Middleburg, Pa. MARJORIE ANN EICK—Home Economics—Hillsgrove, Pa. ROBERT C. FOUST—Music—Montour, Pa.





ORLEY A. FORD—Secondary—Horseheads, N. Y. DONALD WAYNE FREED—Music—Williamsport, Pa. DAVID HALL—Secondary—Mansfield, Pa. KATHERINE ANGELA HAUGHTON—Home Economics—Frackville, Pa. F. FLORENCE HEDGE—Elementary—Ulster, Pa. NAOMI HOPPE—Secondary—Nicholson, Pa.

PATRICIA JAMES—Music—Erie, Pa. ELAINE J. JAQUISH—Home Economics—Tunkhannock Pa. CAROL J. JELLIFF—Secondary—Bentley Crab, Pa. FRANK A. JUSWIAK—Secondary—Wilkes-Barre, Pa. VIRGINIA R. KAST—Home Economics—Lehigh, Pa. MORGAN ARTHUR KELTS—Secondary—Westfield, Pa.

GLADYS E. LEFFLER—Elementary—Austin, Pa. EILEEN LEONARD—Home Economics—Pleasant Mount, Pa. EMMA LOU LOVE—Home Economics—Falls Creek, Pa. STUART STANLEY MACKOWIAK—Secondary—Morris Run, Pa. JANICE E. MADIGAN—Home Economics—Mansfield, Pa. HAMILTON WEST MARSHALL, Jr.—Secondary—Mansfield, Pa. L. CAROL McCLINTOCK—Home Economics—Lawrence Park, Pa.





JEAN W. McFADDEN—Secondary—Mainesburg, Pa. ELEANOR JUNE MISSIMER—Home Economics—Pottstown, Pa. ELIZABETH H. MOLYNEAUX—Home Economics—Mansfield, Pa. EDITH O. MORROW—Secondary—Sugar Run, Pa. BEN MOSCOW—Secondary—Wilkes-Barre, Pa. VIRGINIA MOWERY—Home Economics—Frackville, Pa.

ANNA JEAN MULCAHY—Secondary—Reme, Pa. GLORIA E. NELSON—Music—White Haven, Pa. PAULINE FERN NICHOLS—Home Economics—Birchardville, Pa. NILES E. NORMAN—Secondary—Arnot, Pa. LUCILLE E. NOWAK—Secondary—Blossburg, Pa. BETTY JANE PACKER—Home Economics—Galeton, Pa.

DALE M. PALMER—Secondary—Mansfield, Pa. JANE PAWLING—Home Economics—West Milton, Pa. MARY JANE PETERS—Music—Sayona, N. Y. DEYO CHARLES RARRICK—Secondary—Mansfield, Pa. DON RAZEY—Music—Emporium, Pa. JANET READ—Secondary—Mainesburg, Pa. ROBERT PHILLIP REDNER—Secondary—Galeton, Pa.





JOHN ROBERTS—Secondary—Little Marsh, Pa. ARLENE M. ROTHERMEL—Home Economics—Klingerstown, Pa. MARIE V. SCUDDER—Elementary—Riverhead, N. Y. JERRY A. SHANNEN—Secondary—Meshopper, Pa. VIRGINIA M. SINGLEY—Home Economics—Shumans, Pa. MARY DICK STEADMAN—Home Economics, Mansfield, Pa.

RAE H. SMITH—Home Economics—Catawissa, Pa. ROMAYNE E. SMITH—Music—Dalton, Pa. WANDA R. SMITH—Secondary—Crooked Creek, Pa. LAURA E. TYRRELL—Home Economics—Nicholson, Pa. MILDRED WARNER—Home Economics—Montrose, Pa. CHARLES E. WEED—Music—Dushore, Pa.

JEANNE LIVA WEIL—Home Economics—Plymouth, Pa. MELVIN I. WEISS—Secondary—Sayre, Pa. ELIZABETH BRACE WETMORE—Music—Wellsboro, Pa. JEAN M. WILLSON—Elementary—Sayre, Pa. ELEANOR JEANETTE WOOD—Music—Knoxville, Pa. THELMA L. ZUNDEL—Secondary—Galeton, Pa.

The following entered at the beginning of the second semester:

ANN M. BARRETT—Elementary—Towanda, Pa. ALICE E. BEACH—Home Economics—Mansfield, Pa. MAE HELEN BEACH—Elementary—Towanda, Pa. LORETTA R. BRIGGS—Secondary—Le Raysville, Pa. LOIS M. BRYANT—Secondary—Dallas, Pa. ERNESTINE FRANTZ—Secondary—Camptown, Pa. KATHERINE R. LAMBERTON—Home Economics—Shinglehouse, Pa. EVA LANDON—Elementary—Towanda, Pa. EDGAR L. LAWTON—Secondary—Wellsboro, Pa. ELLEN LOTT—Music—Mehoopany, Pa. NANCY MARCUCCI—Secondary—Wyalusing, Pa. LAWRENCE L. MEADE—Secondary—Mansfield, Pa. ELIZABETH ANNE SMITH—Elementary—Wyalusing, Pa.





To the memory of
Donald Farrell



To the memory of
Stuart Wingate



A decorative graphic consisting of two parallel red curved lines with a white space between them, resembling a stylized rainbow or a banner. Two red five-pointed stars are positioned above the upper red line. The graphic is positioned behind the text.

The
ACTIVITIES

Student Council



Seated: Dr. Steele, Seymour, Cole, Harris, Rauch, Miss Wasley.
Second Row: Ross, Redfield, Elliott, Gallo, Brotzman, Bottiger, Liparulo.
Third Row: Snyder, Rodsky, Ceder, Stowe, Baynes, Kemp.

This is the second year that the students of Mansfield State Teachers College have been under one united governing body. The second year has proved as successful as the first and with the help of the students the council will continue to function as well in the coming years.

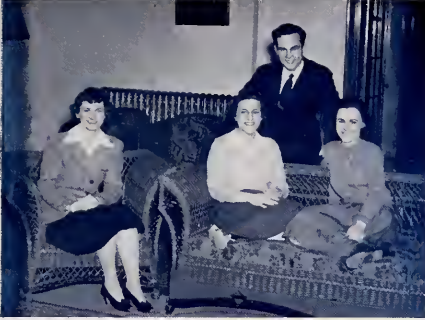
Every Mansfield student is a member of the Mansfield State Teachers College Government Association. The Student Council, the governing body of the Association, consists of twenty students who have been elected by the student body to represent them. Each student is represented in the following ways: by the officers of the council, by his Class President and Representatives, and by the President of his place of residence. The personnel has varied greatly this year and as the men members entered the service, new representatives were elected.

The Council's progress can be seen by the following projects it has promoted: organization and publishing "The Pass-word"; planning Freshman Week; spon-

soring the Big-Sister project; operation of the extra-class point system; appointment of students to Student-Faculty Committees; planning the Social Calendar; approval of M.S.T.C. participating in "Who's Who In American Colleges and Universities". The most important project undertaken this year and the one of which the Council is most proud is the State Student Government Conference which was held on November 13th and 14th. Nine of the Pennsylvania State Teachers Colleges sent representatives to this campus. Panel discussions on problems which faced other Councils were held and suggestions for solutions were discussed. The delegates were entertained informally in the dormitories, at parties, dances, and movies. The Council was very happy to have this opportunity of being hosts to other Teachers College students.

To help the Council do the best work possible by expressing to the members their desires and wishes is the responsibility of the students.

May Day Festivities 1942



STUDENT COUNCIL OFFICERS

Marge Cole, Secretary; Joan Cawley, Vice President; Basil Harris, President; Gloria Rauch, Treasurer.

May Day was one of the highlights of the year 1942 because Glenn Miller saluted Mansfield and announced the name of our May Queen, Miss Christine Mack, whose identity up to this time had been a secret to the student body.

As our guests on this day we had seniors from the various high schools in our service area. They were impressed with the grace and charm of the queen and her court exemplified during the day.

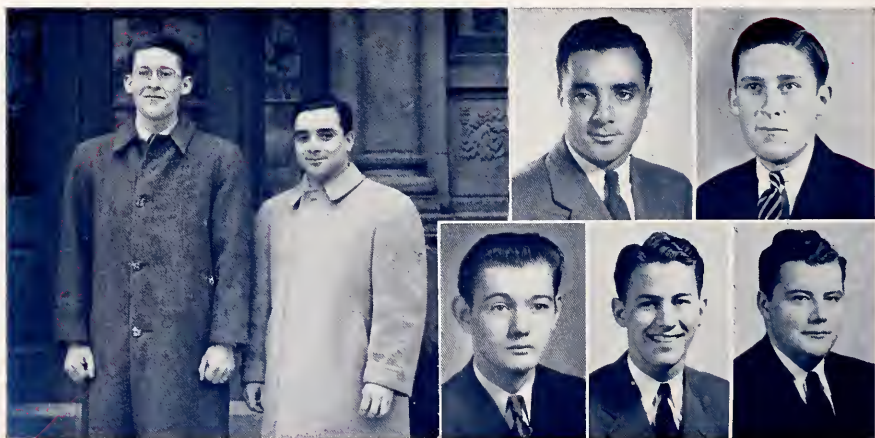
To complete the celebration, the Queen and the court presided over the dance in the evening which featured the music of the Esquires.



Standing: Janet Johnson, Margaret Garber, Jean Somerville, Norma Gregory.
Sitting: Ann Strickland, Lola Reynolds, Queen—Christine Mack, Shirley Gillette, Ruth Moore.

Men's Dormitory Council

The Men's Dormitory Council exists to regulate student life in South Hall by formulating and administering policies which will enable the men students to live together for mutual benefit. They are elected by the residents of South Hall to assist Dr. Steele, the Dean of Men, in carrying out the regulations which have been established. This year the personnel was: James Liparulo—president, Lewis Van Gorder, Jack Morris, Dan Hooley, and Bob Rice.



Inset: Van Gorder, Liparulo, President.

Top Row: Liparulo, Van Gorder
Second Row: Hooley, Rice, Morris.

Women's Dormitory Council



Top Row: Rathbun, Henning.
Bottom Row: Moore, McHenry, Cook, Coppersmith, Eichelberger, Brotzman.
Inset: Senior Members—Brotzman, President; Chaffee, Cook.

A large group of people living under one roof needs and desires some form of government. The Women's Dormitory Council serves this purpose in North Hall. However, we prefer to be known as those who really try to help each girl benefit to the greatest degree from all associations that she makes day by day. We make and put into action rules for the dormitory living that we believe serve toward making North Hall a busier and happier place in which to live. However, we are merely the representatives of all the girls. Each one of these girls must participate in and cooperate with the Council to make its program a success.

The year 1942-1943 has been a fine one in many ways. We say "Thank you" to all those who have shown interest and have helped us to be a beneficial organization in campus life.



Carontawan

1943

Co-editors Seipp and Snyder.



Seated: Seymour, Clare, Snyder, Cole.
Standing: Hess, Johnson, Seipp, Bailey, Ayers, Ross Campana.

Carontawan Board

We present this, the 1943 Carontawan, with the sincere hope that the students of Mansfield will find it an annual which will give a vital and accurate picture of our Alma Mater.

The Carontawan Board is normally composed of twelve members chosen from the four classes. This year should make history in that, from the original staff, we lost two editors, an assistant editor, an assistant business manager, and the photograph editor. The staff extends its appreciation to the three men who gave such splendid leadership: Thomas McGraw, Jack Snyder, and Basil Harris.

We have enjoyed preparing this yearbook. It is our hope that you will, both now and the years to come, have much pleasure in reading it and recalling campus life in 1943.



Ross Bryan, Business Manager; Mr. Bertin, Adviser; Arthur Seymour, Senior Editor; Donald Ayres, Photograph Editor.

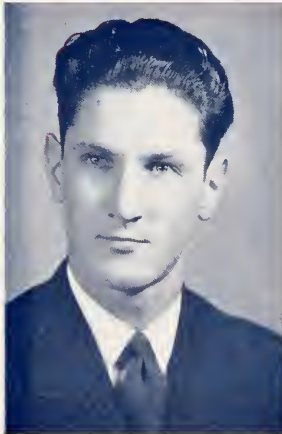
The Flashlight

The purposes of this college paper are, in short: to promote interest in college activities; to develop a high degree of school spirit; to give an opportunity to students to develop initiative and skill in newspaper work; to produce a spirit of cooperation among the student body; and to be the "Voice of the Student Body of Mansfield State Teachers College."

A greater informality has characterized the whole publication as the Staff of '41-'43 has sought to follow these purposes. To reflect the life of a college is not an easy task, to maintain a true perspective is not the gift of many; but the Board of Publication has done these things in a manner that is worthy of high praise.

The "Flashlight" now has its own constitution, and the awarding of keys to eligible members has made this organization much stronger and more enthusiastic.

Next year the paper will be edited by Co-editors, a policy adopted because of the present emergency.



Dell Blackwell
Editor



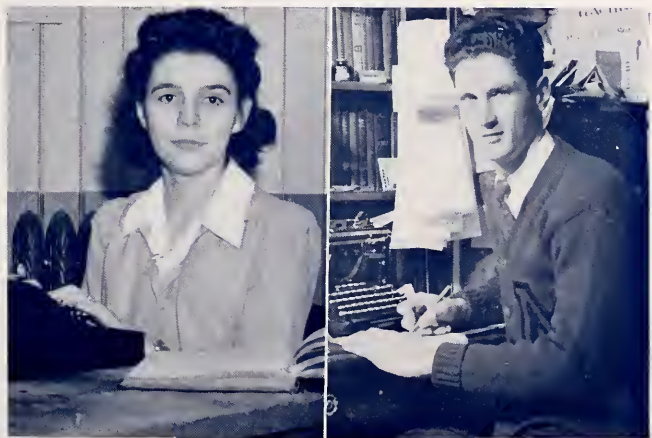
Edith Hardy
Business Manager



Mr. Darrin
Adviser



Seated: Ebinger, Bottiger, Varcoe, Baker, Bolt, Aten, Preisler.
Standing: Trivepiece, Farrar, Scudder, Hedge, Shtelds, Henning, Campana, Lawton, Madigan,
Beck, Colwell, Clair, Ferster, Mertz.



A couple of informals.



Musical Organizations



Symphony Orchestra

Just before its depletion in number due to the calling of the Army Reserves, the orchestra presented a superb concert in assembly—a concert long to be remembered. Since that time, the group has been so limited in number and changed in balance that we can no longer aspire to those high standards so characteristic of our organization in the past. However, with Mr. Mandelkern's encouragement, everyone has retained that same spirit toward rehearsals as was formerly customary.

Our work now consists of reading some of the better symphonic literature, including Mozart's Jupiter Symphony, Magic Flute Overture, and the E Minor Symphony. This not only increases our knowledge of standard orchestra literature in general, but also makes us more appreciative listeners.

Exceptionally enjoyable and beneficial are the afternoons when Mr. and Mrs. Mandelkern play for us Sonatas for violin and piano by Beethoven and Mozart, acquainting us with literature of a type with which we are less familiar. Our thanks to them and a deep appreciation to our conductor for his constant inspiration and thoughtful guidance.

The Symphonic Band

Under the direction of Mr. Bertram W. Francis, the band has strengthened the morale and has kept up the spirit of the college through its various appearances. As in the past, membership in this organization is given those who have proved themselves, through individual try-out, capable of reading the band literature.

The activities of this group include assembly concerts and the annual broadcast from Straughn Hall over Station WENY. Due to the lack of transportation facilities the band has been unable to concertize outside of town.

During the year, opportunities for conducting the band are given to the senior members.

The membership of this organization has decreased because a large number of the boys are now in the armed forces. It has been difficult to maintain a well-balanced band and much credit should be given to the few remaining members for the splendid work they have done.



Women's Chorus

The Womens' Chorus was organized in September of 1942 for the purpose of providing choral experience for women students who are not in the music department. Selection is made by competitive tryout before a jury of four members. The chorus sings only representative choral music and is directed by Miss Clarissa Randall. The officers for the year were: President—Doris Partchey; Vice President—Jean Farrar; Secretary—Mercedes Aten; Accompanist—Jane Rathbun.



Front Row: Rathbun, McFadden, Wehr, Shannon, Willson, Thomas, Fought, Aten, Trivelpiece, Henning, Campbell, Reedy, Bump, Miss Randall.
Second Row: Cawley, Tyrell, Miller, Schanbacher, Hedge, Partchey, Smith, Meyers, Dorsett, Van Noy, Roupp, Day, Farrar, Moore, Clare.
Third Row: Huff, Morley, Harrington, Van Wie, Decker, Howe, Doll, Hamilton, Auten, Laudenslager, Coon, Elliott, Reed, Jupenz.

College Chorus

The College Chorus includes in its membership all of the students enrolled in the Music Department. Under the direction of Miss Clarissa Randall, it has studied a wide variety of fine choral music this year, and has furnished music for several of the Vesper services. Though necessarily hindered badly by the absence of most of its male voices during the second semester, the chorus has continued to function as an organization of importance to its members.



Seated: Stewart, Griffith, Snell, Britton, Bostock, Schermehorn, Morris, Long.
 Standing: Miss Brooks.

Madrigal Singers

The Madrigal Singers are completing their fifth year as a musical organization on the campus. Like other college groups, this one has been affected by the shortage of men on the campus. Mid-year Commencement and calling of the En-listed Reserve Corps made replacements necessary twice during the school year, but the group continues, now with a membership of six instead of the usual eight. In spite of these changes in personnel, the Singers gave their usual Christmas program, sang for broadcast in January, and will sing for the evening concert to be given on Baccalaureate Sunday.

In addition to its usual repertoire of madrigals and folk songs, the group this year studied some Elizabethan music employing instruments in combination with voices. The Christmas program included a group of carols played by a trio of recorders, and during the second semester the Singers have studied the well-known "Cryes of London," by Orlando Gibbons.



Left Row: Morris, Karlen, Baynes, Long.
 Right Row: Crooks, Fleming, Summa, Swanson, Henry.
 Business Manager, Zwally.

The Esquires

The Esquires need no introduction to our student body. Under the leadership of Jack Morris and Nick Summa with Bob Zwally as business manager, they played for dances both locally and at more distant points. This fine band has become inactive for the duration, however, due to the lack of men.

KAPPA DELTA PI



Front Row: Violet Varcoe, Treasurer; Marie Wessenfluh, President.
Back Row: Esther French, Recording Secretary; Sara Orndorff, Vice President; Phyllis Palmer, Corresponding Secretary.

This society grew out of the Illinois Education Club, founded in 1909 at the University of Illinois. In 1911 the Illinois Education Club became Kappa Delta Pi. Today the society ranks among the most influential organizations in the field of education. Mansfield's Beta Rho chapter was installed in 1930 by Alfred L. Hall-Quest and has since continued to carry on work worthy of the high esteem of many.

Kappa Delta Pi, an honor society in education, limits its membership to juniors and senior who have attained an excellence in scholarship. The purpose of Kappa Delta Pi is to encourage high intellectual and scholastic achievement and to recognize outstanding contribution to education.

The activities of this society are partly social but primarily of an educational nature.

The Beta Rho chapter presented a variety of programs this year. Some of these programs included: a brief discussion of the laureate members, "An Old-Fashioned School", a play reviewed by Dr. Swan, "Education in War Time" by Dean Morgan, and an "Information Please" with a panel of faculty members as experts.



Top Row: Mr. Alger, Dr. Doughton, Miss Grigsby, Mrs. Morales, Miss O'Brien, Dr. Stout, Ayers, Baker.

Second Row: Blackwell, Bostock, Bower, Brace, E. Bryan, R. Bryan, Dildine, Emmanucl.

Third Row: Etsweiler, Farrar, French, Hardy, Harrington, Harris, Freed, Hellman.

Fourth Row: L. Hess, M. Hess, Hooley, Johnson, Johnston, Manino, Metzger, Meyer.

Fifth Row: Miller, Miner, Nichols, Orndorff, Owens, Palmer, Partchey, Peard.

Sixth Row: Pierotti, Redfield, Roupp, Rumsay, Schanbacher, Seymour, Shoop, Seipp.

Seventh Row: Singley, Thomas, Varcoe, Weissenfluh, Whitney, Wingate.



PHI
SIGMA
PI



PHI SIGMA PI OFFICERS
Donald Johnson, Treasurer; Kenneth Lee, President; Jack Snyder, Secretary.

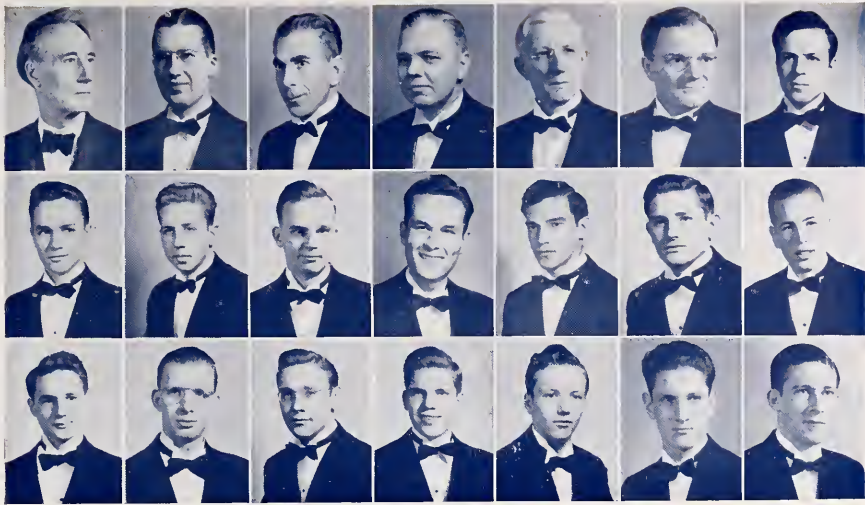
Brothers in:

Sigma Zeta
Class of '43

"M" Club

Student Council
The Classes





Top Row: Mr. Cure, Mr. Darrin, Dean Morgan, Dr. Pratt, Dr. Retan, Dr. Stout, Ayres.
 Second Row: Failey, Eryan, Cedar, Harris, Jacobson, Johnson, Lee.
 Third Row: Pierotti, Roupp, Seymour, Snyder, Webster, Blackwell, VanGorder.

Phi Sigma Pi as a campus organization prominent in student leadership pauses for awhile to shift her efforts from a collegiate level to one of national scope. During the years past Phi Sig has furnished men whom the student body have seen fit to elevate to a place of student leadership. Now in response to "Uncle Sam", these same men, in large measure, are serving as officers in the armed forces of the United States of America. The bulk of the brothers this year are enlisted in the U. S. N. R. V-7 College program and will report for duty on or about July first. These, after completion of a four months training, will be commissioned as ensigns.

This year, the intra-mural athletic program was established on a class basis and consequently Phi Sig wasn't able to operate as a unit. However, the high scoring men on the various teams were Brothers.

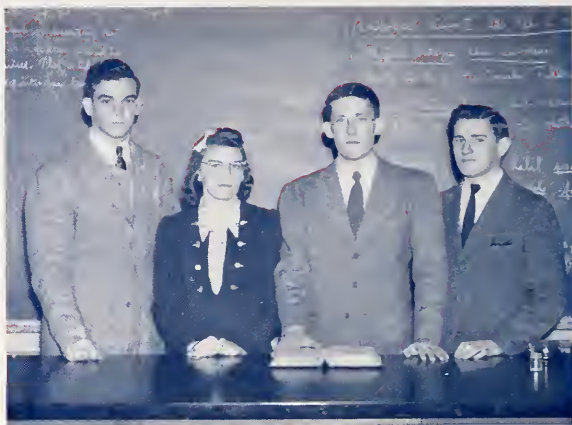
Phi Sigma Pi made provisions for the reorganization of the fraternity after the war and arranged to leave the plans and money for this purpose in the office of the president of the college. In the event that reorganization be impossible, we of Phi Sig have stipulated in the plans that the money be given to the March of Dimes. As long as Dr. Stout be adviser to the Frat, he shall be our executive.

We enjoyed a banquet at the Little Tavern March 17 with Dr. and Mrs. Stout and our guests, Miss Wasley and Dr. Steele. Mr. and Mrs. Stout entertained us at a later date in their home. Where they got the coffee and sugar shall ever be an unsolved mystery.

Phi Zigma Pi, bidding Mansfield's campus farewell for the duration, ventures to bigger things, hoping one day to return to better things to a greater Alma Mater.



SIGMA ZETA



Morris Jacobson, Treasurer; Violet Varcoe, Secretary; Lewis Van Gorder, Master Scientist; Don Johnson, Vice-Master Scientist.

Sigma Zeta, a national science honor society, limits its membership to students who have attained excellence in scholarship and who are majoring in either mathematics or science. It also extends associate membership to sophomores who have met the above standards.

The National Sigma Zeta has seen a steady increase in chapters since its founding at Shurtleff College, Alton, Illinois, in 1925. Each member of this organization receives semi-annually the Sigma Zetan, the official publication of the society.

Sigma Zeta aims to develop greater interest in the science fields. We feel this has been accomplished in the Lambda chapter during the year through the various programs in which many of the members have taken an active part. The current changes due to scientific endeavors have been brought to the attention of the group. Explanation of some unusual phenomena were also presented. In addition, the organization fostered a social program which is usually culminated by a banquet in the spring. Its newly elected co-sponsors, Dr. Steele and Miss Leberman, have given much time and effort to forwarding the activities of the organization.





Top Row: Hoffman, Singley, Mahood, Hess, Harris, Blackwell, Van Gorder.

Second Row: Marrer, Clare, Varcoe, Johnson, Bottiger Howard, Metzger.

Third Row: Hart, Rees, Ceder, Plastow, Webster, Whitmire, L. Hess.

Fourth Row: Berg, Owens, Jacobson, Mrs. McKinney, Dr. Steele, Miss Leberman, Mr. Byer.



PHI MU ALPHA



Standing: Brooks, Secretary; Morris, Vice President; Long, President.
Seated: Hooley, Historian; Mr. Francis, Adviser; Summa, Treasurer.

Phi Mu Alpha Sinfonia is a national music fraternity for men of superior musical ability and scholastic, professional, and social standing. The organization is dedicated to the interests of the "manly musician and the musicianly man" and endeavors to draw such persons into its fellowship.

We were saddened this early in the year by the death of our president, Stuart Wingate. Stuart was a fine friend and brother, true embodiment of our ideals. His death spells a sharp loss to the school and Sinfonia.

Jack Long was elected to fill Stuart's place and did a fine job until he was called, along with most of our members, by the Army Reserve. During Long's presidency we presented "The Prodigal Son" in assembly—under the leadership of J. Alex Gilfillan.

When the Army Reserves were called, Jack Morris was elected President, Bob Stowe, Supreme Councilman and Vice-President, and Elwood Wells, Secretary-Treasurer.





Top Row: Wertz, Seifert, Bryan, Conner, Hooley, Wingate, Brooks.

Second Row: Zwally, Summa, Morris, Miner, Griffith, Long, Stowe.

Third Row: Kemp, Stewart, Karlen, Wingert, Rice, Crooks, Lofgren.

Fourth Row: Wells, Mr. Mandelkern, Mr. Gilfillan, Mr. Francis, Mr. Warren, Dr. Webster.



PI KAPPA EPSILON

Pi Kappa Epsilon is an honorary homemaking sorority, striving for professional, cultural and inspirational growth. Members of the organization are selected on the basis of their ability to make and keep friends, their leadership ability, personality and other general high standards of living. They must have attained a 2.3 average or better, and are eligible at the end of their Sophomore year. Each year a sponsor and co-sponsor are elected from the Homemaking faculty.

The year's programs are planned to increase appreciation of the fine things of life and to stimulate originality and creativeness. Guest speakers are selected from the faculty and interested townspeople. A special research problem in the field of Homemaking is carried out each year by the sorority members under the guidance of the sponsors.

The meetings are held every alternate month and a banquet and initiation of new members in May terminate the year's program.



Wilma Kidney
Frances Hoffman

Florence Singley
Muriel Hess

Lois Helman
Jean Clare

Marjorie Mahood
Lucy Howard

Marian Freed

LAMBDA MU

Lambda Mu is an honorary sorority for women music students who have attained the ranking of a second semester sophomore, who have an academic average of one and a music point average of two. Other equally important considerations are musical talent, personality, and integrity of character. After having been considered in all these respects, new members are formally initiated and honored by a banquet. These inductions occur twice a year, at the beginning of each semester.

Monthly meetings, which are held in our sorority room, offer members an opportunity to exchange musical experiences, to study selected phases of music, and to have a good time socially.

Each year members endeavor to complete a project which will be a permanent benefit to the sorority. This year we have equipped our new sorority room and started a music library.

Other activities included a Christmast program in the college foyer, making of white wool sorority scarves, record salvage, and presentation on Latin-American music for Assembly.



Front Row: Murdock, Clendenen, Heller, Kingsley, Miss Perkins, Brace, Eastman, Coppersmith.
Second Row: Rathbun, Stuart, Bryan, Port, Fleming, Miss Brooks, Heasley, Dildine, Shoop, Britton, Miss Atwater.

Y. M. C. A.

The Young Men's Christian Association attempts to develop and promote Christian living in its physical, mental, moral, and spiritual phases through recreational facilities, study, fellowship, and worship. From time to time addresses are given by members of the faculty, ministers of the community, and others. Sometimes the "Y" sponsors debates, group discussions, singing, or some other type of programs related to Christian living.

This year the Y.M.C.A. was one of the campus groups to jointly sponsor the Religious Week—March 2 to 4. At this time, the ministers of the local churches: Rev. Griffiths, Rev. Father Kelly, Rev. Hilton, Rev. Schaff, and Rev. Bartholomew, were on our campus, together with a group of visiting counsellors: Dr. Shimer (Bucknell), Dr. Iglar, Dr. Brettle, Canon Baldwin (University of Pennsylvania), and Dr. Brink (Cornell). For three days these men led student discussions on various questions based on the theme: "For the living of these days." All these meetings were well attended and reflected deep interest of both students and faculty.

The year's program of the Y.M.C.A. has been under the direction of the cabinet members and the sponsorship of Dr. Gwinn and Dr. Steele.



A shot from a panel discussion.

Y. W. C. A.



First Row: Hardy, Heasley, Miss Grigsby, Metzger, Howard.
Second Row: Hart, Preisler.
Third Row: Singley, Hess, Hardy, Shoop, Rathbun, Utt, McHenry.

During its second year of being on a voluntary basis, the Y.W.C.A. has continued to grow in size and purpose. All members of the "Y" have an opportunity to participate in its program, and to be a link in its chain of world-wide Christian fellowship.

This organization, a member of the Student Christian Movement, has for its purpose: "To unite in a desire to realize full and creative life through a growing knowledge of God."

The program of the "Y" consists of Thursday evening devotional meetings in the nature of lectures or discussions of current problems by outside speakers, individual members, or the various classes.

The Y.W.C.A. has contributed to the social life of the campus through its pajama parties and the "He-She Kid" party.



Women's Day Association



Women's Day Student Officers

Ruth Whitney, Vice President

Ruth Stebbins, President

Mary Jane Meyer, Secretary-Treasurer

The Women's Day Student Club is composed of all women students not living in North Hall. Its purpose is to provide a college social life for these students by giving them a better chance to know each other and to have fun together. The Day Students' Rooms are located on the first floor of North Hall. There the students study, rest, play cards, or just talk. Some of the year's activities included joint luncheons with the Men's Day Student Club, a picnic, and a party for the seniors who graduated in January.

The Men's Day Student Club, formerly an active group, was forced to disband its organization for the duration.

French Club

The French Club, sponsored by Mr. Herbert Manser, gives opportunity for students interested in the language and people of France to widen their horizons and background through the study of French literature, art, and music, and customs. Two years high school French or its equivalent are required for membership. This year the members of the club have had the privilege of listening to favorite recordings from the record library of their sponsor. The officers for the past year have been: President—Phyllis Palmer, Vice-President—Robert Pierotti, Secretary—Ethel Nicholas, Treasurer—Jeanette Wilson.

"M" Club

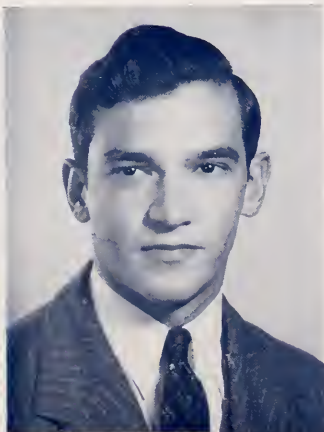


Standing, left to right: Van Gorder, Holzer, Lee, Blackwell, Finn, Juzwiak.
Seated, left to right: Magalski, Rodsky, Liparulo, Jacobson, Casale, Smith.

The "M" Club is an organization of men who have earned their school letter for participation in athletics. The requirements are rigid and those who have taken part in at least half the athletic events in any sport and have passed the difficult initiation can feel justly proud of their acceptance into this fraternal club.

Good sportsmanship and loyalty to Alma Mater are the main aims of the "M" Club. This year the members who left for the service will carry the fight to Uncle Sam's enemies as they have previously to our opponents.

The club sent almost a score of its members to the United States Armed Forces. In all branches you will find them. In the Navy: Jacobson, Blackwell (reserves); in the Marines: Casale, (reserve); in the Army Air Corps: Finn, Magalski, Lee, McGraw, Van Gorder, Derney; in the Army: Redner, Smith, Helzer, Juswiak, Liparulo, Lalley.



President—Morris Jacobson

Omicron Gamma Pi



First Row: Hart, Chaffee, Whitmire, Brightbill, Kitaif, Mahood, Dieffenbacher, Singley, Ross, Rauch, Brown.

Second Row: Howard, Smith, Preisler, Muth, Ferster, Wehr, Beardslee, Shephamer, Heyd, Morley, Bottiger.

Third Row: Hess, Doll, Conner, Shannon, Payne, Greene, Campbell, Frisbee, Jones, Etsweiler.

Fourth Row: Miss Ericksen, Mrs. Morales, Miss Hancock, Miss Buckingham, Miss Mattson, Miss Farrer, Dunbar, Saxton.

Omicron Gamma Pi is composed of all the girls enrolled in the Home-making Department. Being affiliated with the state association, Omicron Gamma Pi sends representatives to meet with girls from other clubs of the state at the annual spring convention.

Due to the war conditions, the club did not hold its traditional banquet and dance this year, but, instead presented a Mid-Winter Carnival, complete with Bingo, refreshments, pitching pennies, novelty booths, exhibits of articles made by the Homemaking girls, fortune tellers, and other special features. The proceeds of the Carnival will be donated to worthy causes aiding in the war effort.

The monthly meetings included programs on "Living in Wartime", "Facts about Rationing", "The Life of Ellen S. Richards", and "Careers Open to Women Today". Several work meetings were held in which the members worked on Red Cross projects. Also a "Live for Victory" plan was adopted by a majority of the members.



First Row: Love, Austin, Singley, Packer, Smith, McClintock, Henning, Fought, Heyd, Reedv.
 Second Row: Kast, Madigan, Pawling, Tyrell, Leonard, Drumm, Eick, Romerinel, Herrold,
 Miller.

Third Row: Butler, Betz, Steadmanl, Molyneaux, Warner Missimer, Weil, VanTyle, Egizie,
 Richardson.

Fourth Row: Buckingham, Beach, Armstrong, Drumm, Kennedy, Auten, Laudenslager, Coon,
 Utt, Tobias.

Fifth Row: Fives, McHenry, Morrisen.

The aims of Cmicron Gamma Pi are the furtherance of better home-making teacher activities and the establishment of better homes, both of which make for better and happier living.



Scene from the Junior High Cafeteria.



W. A. A.

The Women's Athletic Association is an organization for women students who are interested in a well-rounded athletic program. It seeks to promote good health, a greater interest in recreational activity, and promotion of physical fitness to contribute to the war effort. Besides promoting and stimulating good sportsmanship and wholesome living, it is noted for the interest it takes in the welfare of the whole college. The major accomplishment along this line has been the raising of a large sum of money for the repair of the bowling alleys.

As recommended by the Social Welfare Committee, the Association has held meetings every other month this year. These meetings included a bonafire and marshmallow foast, a game party and a sleighride.



Burton, Vice President; Baker President; Barrett, Treasurer; Thiemann, Secretary.



First Row: Elliott, Shields, Ellsbree, Gallo, Richardson, Colwell, Benson, Gilbert, Buckingham, Singley, Henning, Baker.
Second Row: Armstrong, Varcoe, Mack, Coles, Van Duesen, Jelliff, Hoffman, Austin, Love, Kresler, Thiemann, Fought.
Third Row: Reedy, Kennedy, Laudenslaier, Reese, Stever, Krueger, Heyd, Harrington, Tyrell, Beck, Betz, Morrow, Barrett.
Fourth Row: Conner, Utt, Coon, Bump, Burton, Clair, Purdy, Scudder, Decker, Corbin.

Each year, under the supervision of Miss Morris and the leadership of sport managers and captains, a series of tournaments are held in tennis, basketball, badminton, volleyball, softball and table tennis. The basketball tournament is especially popular as the teams are made up according to classes. The best teams are chosen to play exhibition games. Other activities carried on are swimming, archery, hiking, roller skating, coasting, skiing, and bowling. Not only are the girls afforded the opportunity to participate in all these activities, but are given the chance to act as referee, umpire, and coaches.

Each member of the organization who earns 200 points by participating in the various activities, receives an "M" in recognition of her achievement.

The College Players



First Row: Clare, Weissenfluh, Braisted, Hart, Ebinger, Johnson, Greening, Bower.

Second Row: Metzger, Zwally, Miss Allen, Johnston, Hess.

Third Row: Bower, Marrer, Morrison, Tyrell.

Fourth Row: Harris, Bolt, Dwyer, Lane, Heinrich, Freil, Deiffenbacher, Eicheberger, Ross, Smith, Farrer, Casey.

Fifth Row: Eaves, Snyder, Etsweiler, Steadman, McHenry, Schanbacher, Pierotti.

Despite war's alarms and excursions, with the attendant manpower shortage on Mansfield's campus, the College Players lock back on a successful year: one that has brought continued artistic and financial success and continued growth in the gentle art of acting. The winter play—Kaufman and Hart's **GEORGE WASHINGTON SLEPT HERE**—swept a record crowd into Straughn Hall, and for the first time in its history the organization received Student Government allocation for the spring play, thus putting Mansfield's thespians on a basis with guest artists in the Auditorium series. This has been a heartening reward for countless hours enthusiastically spent in long rehearsals, for the earnest striving toward a high standard of artistic achievement, for ingenuity in the building of sets, devising costumes, and skill in stake make-up. The quiet and charming little comedy of the late Sir John Dr nkwater—**BIRD IN HAND**—will set, the Players believe, another record. Ambitious plans are in the making for next year's productions since the campus dramatic organizations sincerely believes that the theater as a morale-builder is as important in college life as it is in army camps all over the world.



Art Club

Membership in Art Club is open to those students who attain an A in one semester of any art course.

The program is planned to develop the interests and talents of all members. This year the activities have included presentations by guests and members of "Flemish Art" and "Pennsylvania Art", work meetings, movies: "How Young America Paints" and "Handicrafts", and interesting talent show by the new members at initiation, and parties. Following the annual custom, Art Club again was responsible for all campus decorations during the Christmas season.

Thus, Art Club lives up to its aim: "to promote an appreciation of the fine arts through the examination and creation of artistic things."



Front Row: Weissenfluh, Howard, Harrington, Miss Murphey, Seipp, DeLappa, Kern, Clare, Heyd, Hellman, Whitney.
Second Row: Hess, Hart Rees, Zimmerman, Zundell, Campbell, Brotzman, Perd, Baker, Nichols.
Third Row: Gallo, Schanbacher, Thomas, Madigan, McClintock, Smith, Whitmire, Hoffman, Egizie, Wilson, Hardy.
Fourth Row: Tobias, Conner, Coon, Laudenslager, Utt, Pease, Howe, Murdick, Snell, Henning.

The Student Government Conference



Thirty-three students from eight of the State Teachers Colleges of Pennsylvania gathered here on the Mansfield campus on November 13 and 14. We entertained them royally in the Mansfield manner while the various delegates renewed old acquaintances, made new friends, and got another slant on some of the problems confronting them on their campuses.

Mr. Morgan told the group of some of his educational experiences in that makes-you-want-to-listen way of his. Dr. Pratt addressed the final meeting of the group with a few pertinent remarks, and the conferees departed with an excellent opinion of Mansfield.

Saturday, November 14, everyone but Lock Haven was delighted to see the Mountaineers tie Lock Haven S. T. C. in a bang-up football game—the last for the duration. That night, the Don Cossack Russian Chorus thrilled all who were able to stay, by the splendid rendition of their choral work.

Each year the student governments of the State Teachers Colleges of Pennsylvania hold a conference at some school which was chosen by the association the previous year. This Association is made up of student governments of all the State Teachers Colleges of Pennsylvania.







A decorative graphic consisting of two parallel red curved lines with a white space between them, resembling a stylized rainbow or a ribbon. Two red five-pointed stars are positioned above the curve, one on the left and one on the right. The word "The" is written in a black cursive font, and "ATHLETICS" is written in a bold, black, all-caps sans-serif font, both centered below the graphic.

The
ATHLETICS

FOOTBALL



Standing: Cichocki, Redner, Rarick, VanGorder, Casale, Moscow, Dorney, Baynes, Jacobson, Hclzer, Rcc'sky, McGiaw, Lee, Lalley Mr. Davis.
Kneeling: Bradshaw, Foster, Weiss, Criss, Redner, Magalski, Finn, Liparulo, Smith, Hayden, Juswiak.

This was Mansfield's first wartime football team. With every member of the team belonging to at least one branch of the service, from the Marines to the Air Corps Reserve, the boys played their football as a preliminary to the bigger game that was to follow.

The team this year not only lived up to, but even surpassed the fighting spirit that has characterized every Mansfield squad. That quality helped to make this season a great success. With various members of the team leaving after each game to help in the war effort, with key men hurt and with inexperienced men outnumbering the experienced, Mansfield's fifty-first team backed by a spirited student body, achieved prominence on the gridiron.

Most of the boys are now in the armed forces and Mansfield, proud of her fighting sons, salutes them and can say, "Well done".

Game	Schedule	Score	
		M.	V.
Mansfield vs. Kutztown (Home)		39	0
Mansfield vs. Edinboro (Away)		18	6
Mansfield vs. E. Stroud, (Home)		6	12
Mansfield vs. Indiana (Away)		0	33
Mansfield vs. Lock Haven		6	6



Paul J. Davis, Coach



Games



Hayden—Line
Finn—Back
R. Redner—Back
Dorney—Line

Casale—Line
Ford—Line
Juswiak—Back
Smith—Back

Mansfield—39

Kutztown—0

Mansfield opened its 1942 season with Kutztown State Teachers College on a day that was reminiscent of mid-summer. Displaying a world of power, Mansfield overwhelmed its opponent to a 39-0 score. The game was never in doubt after the first five minutes. Bob Redner ran the ball to the twenty. With Liparulo and Magalski alternating, in four plays the latter scored the first touchdown. In the second quarter, Liparulo climaxed a forty-yard drive for the third score. After a short intermission (half time) Magalski scored again after a pass interception by Lalley and later Finn ran thirty yards for the fifth score. The waning moments of the game saw Rodsky intercept a desperation pass and run twenty yards for the final touchdown. Although he did no scoring, Bob Redner was one of the stars whose offensive dashes set up many of the scores. McGraw's brilliant kicking kept Kutztown in their own territory most of the afternoon.

Mansfield—18

Edinboro—6

Mansfield left home for its second triumph. This time it was Edinboro that came in on the short end of an 18-6 score. The game was hard fought all the way but Mansfield's superior line play gave them the edge. Using nothing but straight power plays, Mansfield's pony backfield dazzled their opponents with their "Fancy Dan" running. Magalski, Bob Redner, and Liparulo scored the three touchdowns, all coming in the second and third quarters. Holzer and Will Redner played superbly on the line. The game was not without its mishaps though, for in the third quarter, Tom McGraw, one of Mansfield's really good ends, dove for a tackle and came out with a dislocated arm. Liparulo had to take over the kicking duties for the rest of the game and did very creditably.

Mansfield—6

Lock Haven—6

The traditional game of the season, Lock Haven, cocky from an undefeated season, needed only this game to win the championship. Unfortunately for them, our team felt otherwise and Lock Haven was glad enough to settle for a tie. In the first quarter, on a play that was as startling as it was perfectly executed, Bobbie Magalski, with a good block by Liparulo, got away for a 95-yard run. Lock Haven was so stunned that it just couldn't get started. But it was in the third quarter before a bad kick put them in scoring position. Their touchdown was allowed

after much bickering because Mansfield declared it was the interference and not the ball carrier that went over the goal line. Mike Casale played the best game of his college career and the rest of the line did just as well. What makes the game even more Mansfield's was the fact that our team only had 14 members and had not practiced for the whole week preceding the game. Thus the last season of football for the duration of the war was brought to a fitting climax, and was declared a success by the entire college.

Mansfield—6 East Stroudsburg—12

Our team's first defeat came at the hands of a Stroudsburg team that made up in brawn for what it might have lacked in brains. Mansfield scored first on Magalski's brilliant 42 yard dash. Earlier in the game, Bob Redner's long touchdown jaunt was called back because the referee ruled that he stepped out of bounds. Then Jimmy Liparulo kicked out of bounds on Stroudsburg's 3-yard line, setting up our team's lone touchdown. In the second quarter, the opponent's weight began to tell and they scored from the 1-yard line, tying the score. The rest of the game was a see-saw battle with a break in the third quarter finally deciding it. On a misunderstood play, Mansfield fumbled on their own 4. Stroudsburg recovered and scored. This was the last time that Stroudsburg was in Mansfield's territory but our team could never get over the break. W. Redner, Lalley, Holzer, Casale, and Rodsky played bang-up ball the whole game. It was really a moral victory for Mansfield as Stroudsburg went on to take the State Teachers Title.

Mansfield—0 Indiana—33

Mansfield's worst defeat of the season was dealt out by Indiana. It was just one of those days when nothing seemed to go right. Magalski nearly got away for a touchdown, but a shoe-string tackler brought him down. Bob Redner went for a long run down the side lines but stepped out of bounds and Jimmy Liparulo just couldn't kick because of poor blocking. Our team took the defeat fighting to the end. Len Rodsky intercepted his usual pass and the backfield found some nice holes, but that's all. Injuries marred the game and depleted our squad still more when Jacobson and Moscow came back with their shoulders in a sling. If it hadn't been for the good work of the ends, Dorney and Ford, the score might have been tabulated on an adding machine.



Holzer—Line
Liparulo—Back
Rodsky—Line
Lalley—Line

W. Redner—Line
Jacobson—Line
McGraw—Line
Magalski—Back





Basketball

Due to uncertain male enrollment and the gas and tire rationing Mansfield dropped intercollegiate basketball and substituted class intramural teams instead. The games were rough and tough and really enjoyed by all the students who attended. The teams were pretty evenly matched and there was so much good material around that if basketball hadn't been dropped, Mansfield might have been a world beater in the State Teachers League. The class teams finished in the following order:

Teams	Won	Lost
Juniors	4	1
Freshmen	3	2
Seniors	2	3
Sophomores	1	4

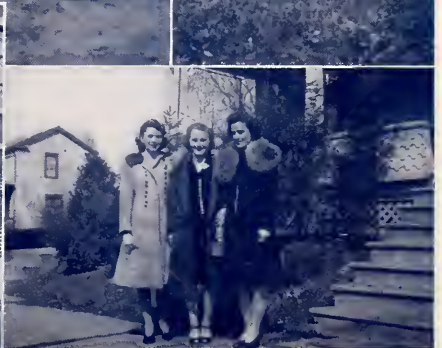
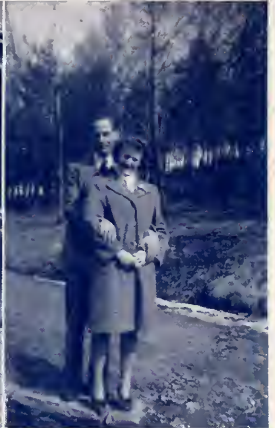




Since men's varsity basketball was discontinued at M.S.T.C. this winter, the women students were given an opportunity to carry on a much more extensive intramural basketball program. Soon after Christmas vacation, ten class teams were organized. Games were played after classes, during vacant periods, and in the evenings until the tournaments were played off in February. Enthusiasm ran high and friendly rivalry among classes reached a peak at the finals on Saturday, February 29. Teams captained by Marie Scudder, Elaine Jaquish, and Carol Brotzman emerged triumphant.

These games were arranged by W.A.A. basketball manager, Lois Henning, with Miss Mcrris, and resulted in a successful season mainly because so many girls were willing to cooperate and eager for such healthful activity. Many girls also gave their time by acting as referees, timekeepers, and scorekeepers, besides the 120 girls who signed up to play. Much credit goes to the following, who acted as captains: Irene Bottiger, Carol Brotzman, Helen Coon, Helen Dwyer, Elaine Jaquish, Gloria Rauch, Donna Rees, Marie Scudder, Betty Shields, and Virginia Singley, and laurels go to the following who were high scorers in their respective classes: Freshmen, Maxine Corbin, 30 points; sophomore, Betty Shields, 53 points; junior, Lesalee Snyder, 40 points; and senior, Jane Elliott, 46 points.







A decorative graphic consisting of two parallel red stripes with a white stripe in between, forming a curved banner. Two red five-pointed stars are positioned above the banner, one on the left and one on the right. The banner ends in a wavy tail on the right side.

The
ADVERTS.

To the Graduates
of the
State Teachers College
we extend
sincere congratulations
and a
cordial invitation
to make use
of our
extensive facilities
for all
personal and business
banking needs.



**FIRST NATIONAL BANK
MANSFIELD, PA.**

H. S. DAVIS GARAGE



Dependable Auto Repairing
Chrysler and Plymouth
Sales and Service

Goodrich Tires, Tydol Gas
Veefol Oils

Willard Batteries and Parts
for all Cars

**Citizens' Phone 169-Y
Bell Phone 9052**



MANSFIELD, PA.

**Compliments of
MANSFIELD DINER**

**Compliments of
MRS. S. FINESILVER**



GARRISON & MYERS

**"The Clothing Store on
the Corner"**



Buy College Clothes
in a
College Town
WE HAVE THEM



Dry Cleaning and
Pressing
Tailoring

HALLMARK GREETING CARDS
for
all occasions



**Prescriptions Filled
Two Registered Pharmacists**



FRO-JOY ICE CREAM
Served at Our Fountain



**COLES PHARMACY
(On the Corner)**



**TRY
THE DAIRY STORE
FOR THE BEST
IN FOUNTAIN SERVICE
DELICIOUS SUNDAES
AND SODAS**



ROSE CHEVROLET
Quality Used Cars
CHEVROLET AND OLDSMOBILE
SERVICE



MANSFIELD, PA.

Wishing you the Best of Luck



**TWAIN
THEATRE**



MANSFIELD, PA.

**THE
CROSSLEY
GREENHOUSES**



We wish to thank you
for your patronage in the
past; and we are always
ready to serve you in the
future in anything you may
wish in the florists' line.



**Member of Florists'
Telegraph Delivery**



MANSFIELD, PA.

EYES FOR VICTORY

Best Wishes to All Students



DR. GEORGE L. PALMER

Registered Optometrist

19 College Avenue



"All Your Troubles Repaired"



**Compliments of
MORRIS FARMS
MANSFIELD, PA.**



"Compliments
of a Friend"

THE LITTLE TAVERN

○

**Parties and Banquets
Reservations Preferred**

○

"Let us be the house by
the side of the road
and be a friend of
man."

**MARY NARES KEENEY
and
LOUIS NARES**

**181 North Main Street
MANSFIELD, PA.**

○
**Compliments of
T. W. JUDGE CO.**

○

THE MANSFIELD LAUNDRY

○

The College Laundry
wishes success for
the Class of
1943

SWAIN'S MUSIC HOUSE

Mansfield, Pa.



Publishers and Distributors
of School Music



○
Compliments of

THE BAYNE SHOE CO.



MANY THANKS

To the Faculty and Students of Mansfield State Teachers College for the Liberal patronage during the past 53 years to this Leather Shop



FRED L. JUPENLAZ

Everything in Leather



Buy **U.S. WAR BONDS**

Ideas

FOR THE ASKING

Whether it's a yearbook, a booklet, a catalog or a pamphlet, a brochure, broadside . . . whether its big or little, simple or complex, deluxe or economical . . . our well-equipped and highly skilled organization is capable of handling it from beginning to end—from originating the idea to preparing the finished job for shipment . . . Call us in while the job is being planned.



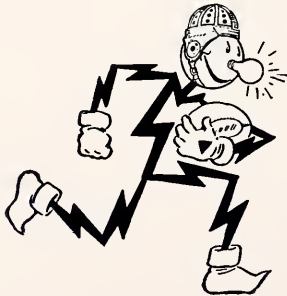
Buildings Occupied Exclusively by Grit Publishing Co.

GRIT PUBLISHING COMPANY
Artists Engravers Printers Binders

*The Carontawan was Designed and Engraved in Our
College Annual Department*

This Book is Bound in a
National Cover

Manufactured by
National Publishing Company
Philadelphia, Penna.



**Reddy
Kilowatt**

Extends Greetings

To Mansfield State Teachers College
Graduates and Students

Northern Pennsylvania Power Company

PHOTOGRAPHS

BY

Harrington Studio

It is our hearty wish that this Carontawan with its portraits and group photographs by Harrington Studio will bring back to you many times in years to come, happy recollections of the years spent at MSTC. To this we add our congratulations and "Best of Luck Always!"

○

*76 South Academy Street
Mansfield, Pa.*

ANY SERVICE

That we can give to the Year Book Boards is always cheerfully given. We enjoy the conferences with the boards and the aid that we possibly give them in undertaking what to them is a brand new experience.

Our years of printing the Carontawan and other year books and our proximity to our customers, have proved valuable aids to the various boards that have produced books. The fact that we continue to serve them shows that our work is appreciated.

When the present graduates are teaching and planning year books for their schools, we should be pleased to give them the benefit of our advice and help them in any way possible.

May success go with you.

MANSFIELD ADVERTISER
Mansfield, Pennsylvania

Index To Advertisers

Baynes Shoe Company	122
Coles Pharmacy	119
Crossley Greenhouses	120
Dairy Store	119
Davis Garage	118
Mrs. S. Finesilver	118
First National Bank	118
Garrison & Myers	119
Grit Publishing Company	123
Harrington Studio	125
T. W. Judge Co.	121
F. L. Jupenlaz	122
National Cover	124
Little Tavern	121
Mansfield Advertiser	126
Mansfield Diner	118
Mansfield Laundry	121
Morris Farms	120
Northern Penna. Power Company	124
George L. Palmer	120
Rose Chevrolet	119
Swain's Music House	122
Twain Theatre	120









